



379 PORTWAY,
SHIREHAMPTON, BS11 9UF

**GOODMAN
& LILLEY**



SITUATED IN A CONVENIENT LOCATION IN THE CHARMING VILLAGE OF SHIREHAMPTON, BRISTOL, THIS SEMI-DETACHED FAMILY HOME BOASTS 3 BEDROOMS, 2 RECEPTION ROOMS AND A LARGE SOUTH FACING GARDEN.

Porch

uPVC double glazed double door to front aspect.

Hallway

Window to side aspect, under stairs storage, stairs to first floor and all doors to lower ground rooms.

Lounge

uPVC double glazed sliding door to rear aspect, chimney breast with electric fire place, radiator.

Dining Room

uPVC double glazed bay window to front aspect, chimney breast, radiator.

Kitchen

Two uPVC double glazed windows to side aspect, a mixture of eye level and low level storage units with roll top work surfaces, stainless steel 1 & 1/2 sink with drainer and mixer tap over, gas 4 ring hob with low level oven, stainless steel extractor fan, tiled splash back, tiled flooring.

Downstairs W/C

uPVC double glazed window to rear aspect, low level toilet with push button flush.

Landing

uPVC double glazed window to side aspect, loft access

Bedroom 1

uPVC double glazed bay window to front aspect, radiator, chimney breast

Bedroom 2

uPVC double glazed window to rear aspect, chimney breast, two storages cupboards, Combi boiler, radiator

Bedroom 3

uPVC double glazed window to front aspect, radiator

Bathroom

uPVC double glazed window to rear aspect, Panel bath with shower over, low level toilet with push button flush, pedestal hand wash basin with mixer tap over, tiled flooring, radiator, extractor fan

-
- Semi-Detached family home
 - Large south facing garden.
 - Recently fitted Combi Boiler
 - Desirable transport links
 - Detached garage
 - Downstairs W/C
 - Entrance porch
 - Walking distance to green space

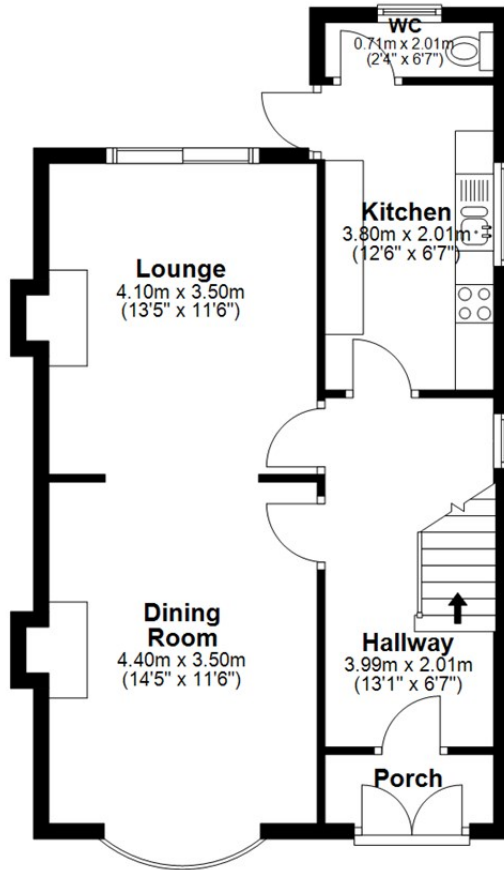


£389,950



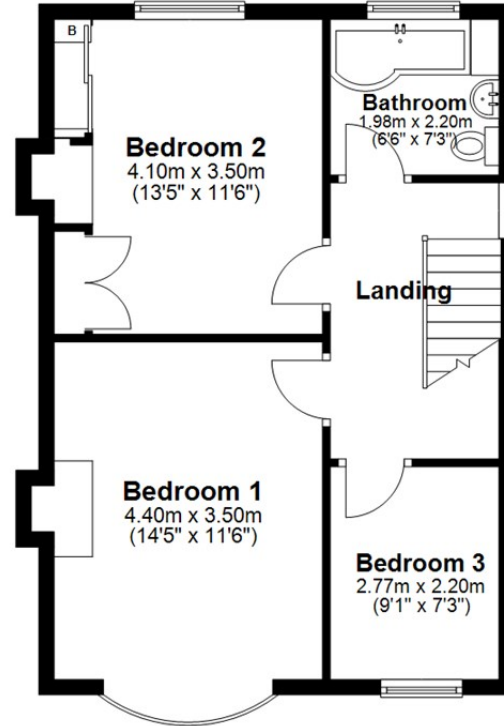
Ground Floor

Approx. 50.9 sq. metres (548.2 sq. feet)



First Floor

Approx. 50.1 sq. metres (539.0 sq. feet)



Total area: approx. 101.0 sq. metres (1087.2 sq. feet)

HENLEAZE - 0117 2130777
henleaze@goodmanlilley.co.uk

PORTISHEAD - 01275 430440
sales@goodmanlilley.co.uk

SHIREHAMPTON - 0117 2130333
shire@goodmanlilley.co.uk

Zoopla.co.uk

rightmove



WWW.GOODMANLILLEY.CO.UK

These particulars are for general guidance only. They do not form or constitute any part of an offer or contract. Goodman & Lilley has not carried out structural surveys of the property. The services, appliances or specific fittings mentioned in these details have not been tested. Every attempt is made to ensure accuracy, however all photographs, measurements, floor plans and distances are for illustrative purposes only. They must not be relied upon when purchasing carpets and or other fixtures & fittings. Lease details, service charges and ground rents are given as a guide only. They should be checked and confirmed by a licensed solicitor prior to exchange of contracts. The copyright of all details, photographs and floor plans remain exclusive to Goodman & Lilley.