



13 ROYAL CLOSE,
BRISTOL, BS10 7XF

**GOODMAN
& LILLEY**



DISCOVER THIS SECLUDED 4 BEDROOM DETACHED HOME LOCATED WITHIN THE CHARMING WINDMILL ESTATE.

Porch

uPVC double glazed window and door to front aspect, tiled flooring, heater.

Entrance Hall

uPVC double glazed window and door from porch, doors to ground floor rooms, stairs to first floor and storage cupboard.

Lounge

Two uPVC double glazed windows to front aspect, fireplace, radiator

Dining Room

door into conservatory and kitchen, radiator.

Kitchen

uPVC double glazed window to rear aspect, a mixture of eye level and low level storage cupboards with wood effect tops and tiled splash back, one and half sink with drainer and swan neck mixer tap over, stainless steel extractor hood, fitted fridge/freezer, tiled flooring, space for cooking range and dishwasher

Conservatory

multiple uPVC double glazed windows to three aspects and sliding door to garden, power points, radiator.

Garage

Up and over door to front aspect, convenience door into hallway. combi boiler

WC

uPVC double glazed window to side aspect, low level WC, tiled flooring, hand basin with mixer tap over and tiled splash back.

Landing

uPVC double glazed window to side aspect, access to loft space

Bedroom 1

uPVC double glazed window to rear aspect, built in wardrobe, door to en suite. radiator

En-suite

low level toilet, hand basin, walk in shower with mixer bar and shower head with tiled surround.

Bedroom 2

uPVC double glazed window to front aspect, storage cupboard, radiator

Bedroom 3

uPVC double glazed window to rear aspect, storage cupboard, radiator

Bedroom 4

uPVC double glazed window to rear aspect, radiator

Shower Room

uPVC double glazed window to rear aspect, low level toilet, hand basin, corner shower with mixer control and shower head, bidet, heated towel rail and fully tiled

Front of property

The front of the property provides parking for several vehicles, there is also gated side access to the rear of property

Rear of property

The rear garden is low maintenance however offers lots of space for plants and shrubs, high hedges provide the feeling of privacy, there is external power points, water tap and a retractable awnings

-
- Detached Home
 - Off Street Parking
 - Conservatory
 - Downstairs W/C

- 4 Bedrooms
- Garage
- Master bedroom with en suite
- Peaceful location

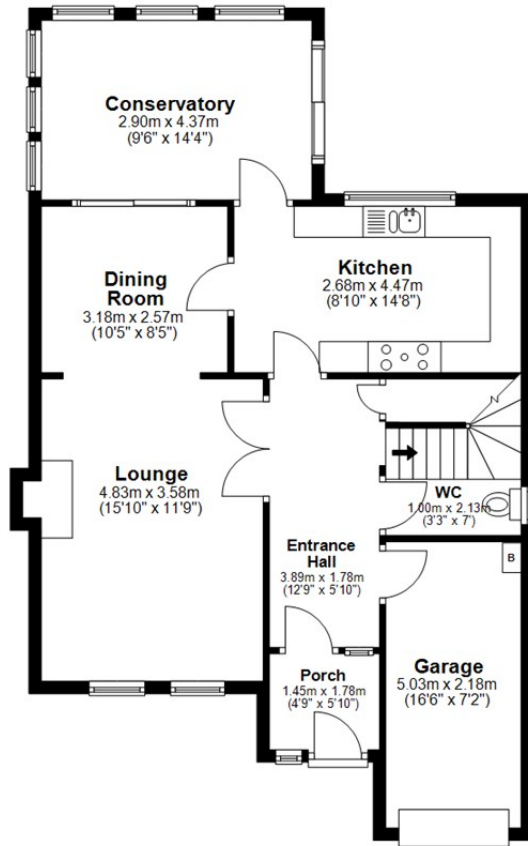


GUIDE PRICE £550,000



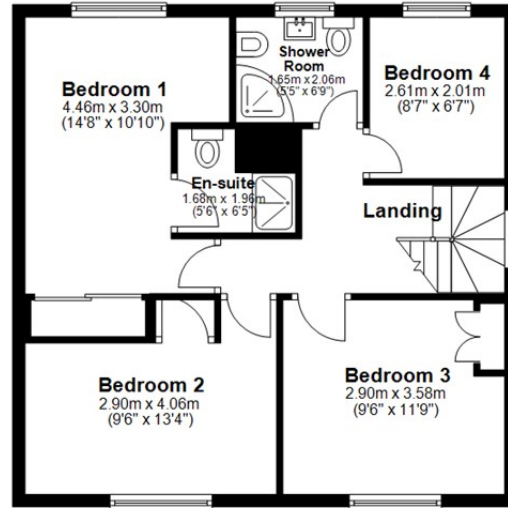
Ground Floor

Approx. 77.1 sq. metres (830.0 sq. feet)



First Floor

Approx. 56.2 sq. metres (604.6 sq. feet)



Total area: approx. 133.3 sq. metres (1434.5 sq. feet)

HENLEAZE - 0117 2130777
henleaze@goodmanlilley.co.uk

PORTISHEAD - 01275 430440
sales@goodmanlilley.co.uk

SHIREHAMPTON - 0117 2130333
shire@goodmanlilley.co.uk

Zoopla.co.uk

rightmove



WWW.GOODMANLILLEY.CO.UK

These particulars are for general guidance only. They do not form or constitute any part of an offer or contract. Goodman & Lilley has not carried out structural surveys of the property. The services, appliances or specific fittings mentioned in these details have not been tested. Every attempt is made to ensure accuracy, however all photographs, measurements, floor plans and distances are for illustrative purposes only. They must not be relied upon when purchasing carpets and or other fixtures & fittings. Lease details, service charges and ground rents are given as a guide only. They should be checked and confirmed by a licensed solicitor prior to exchange of contracts. The copyright of all details, photographs and floor plans remain exclusive to Goodman & Lilley.