



33 CHURCH LEAZE,
SHIREHAMPTON, BS11 9SZ

GOODMAN
& LILLEY



A SUPERB OPPORTUNITY TO PURCHASE THIS SEMI DETACHED HOME SITUATED ON THE EVER POPULAR CHURCH LEAZE THAT WAS BUILT CIRCA 1962 ON FORMER CHURCH LAND KNOWN AS CHURCH MEADOW OR CHAPEL Paddock. THIS HOME HAS BEEN IN THE SAME FAMILY FOR MANY YEARS AND IS OFFERED WITH NO ONWARD CHAIN.

Entrance Hall

Entrance via uPVC door, stairs rising to first floor

Lounge

Bay window to front aspect , gas feature fire, opening into dining room

Dining Room

uPVC double glazed patio doors leading into rear garden, radiator

Kitchen

Window to rear aspect, uPVC double glazed door to side. Fitted with a range of wall and base units with roll top work surfaces. One and a half bowl sink with mixer tap over, plumbing for washing machine. Gas hob with extractor over, electric oven.

Landing

Window to side aspect, access to loft space.

Bathroom

Window to rear aspect,panel bath with mixer tap over, pedestal sink, low level wc

Bedroom 1

Bay window to front aspect, cupboard,

Bedroom 2

Window to rear aspect, radiator

Bedroom 3

Window to front aspect

Gardens

There are gardens to the front and rear with side access. The rear garden is mainly laid to lawn separated by a path with border plants and shrubs with a shed.

Garage

There is a garage to the side of the property with power and lighting and a courtesy door to the rear with additional parking to the front.

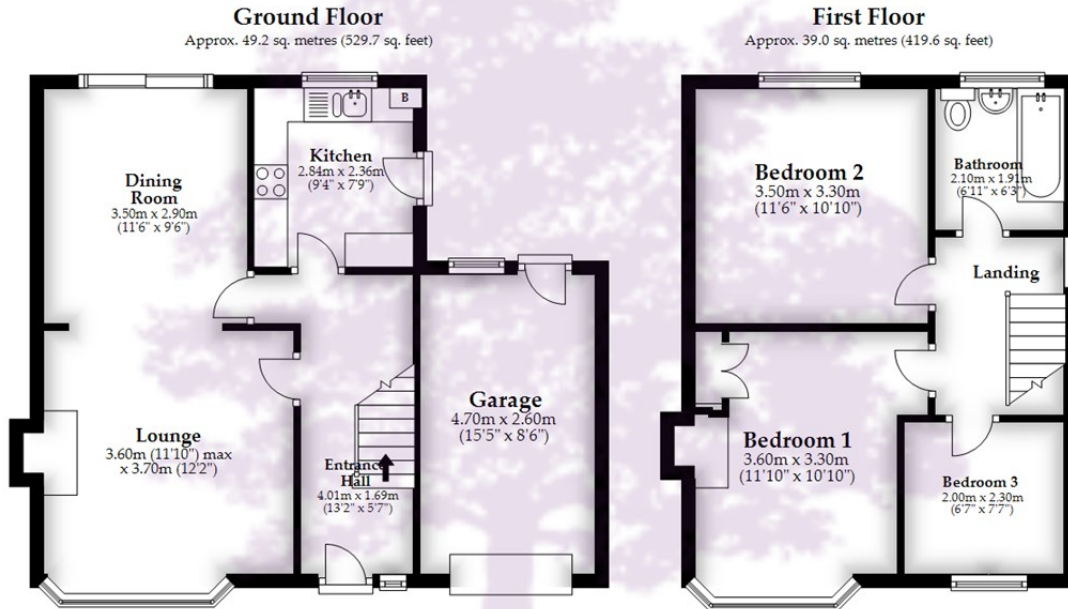
- No Onward Chain
- Three Bedrooms
- Garage
- Modernisation Needed
- Cul-de-Sac

- Semi Detached
- Off Street Parking
- Front and Back Gardens
- Village Location



£315,000





Total area: approx. 88.2 sq. metres (949.3 sq. feet)

Whilst every attempt has been made to ensure accuracy of the floor plan all measurements are approximate and no responsibility is taken for any error, omission or measurement.
Plan produced using PlanUp.

HENLEAZE - 0117 2130777
henleaze@goodmanlilley.co.uk

PORTISHEAD - 01275 430440
sales@goodmanlilley.co.uk

SHIREHAMPTON - 0117 2130333
shire@goodmanlilley.co.uk

Zoopa.co.uk

rightmove



WWW.GOODMANLILLEY.CO.UK

These particulars are for general guidance only. They do not form or constitute any part of an offer or contract. Goodman & Lilley has not carried out structural surveys of the property. The services, appliances or specific fittings mentioned in these details have not been tested. Every attempt is made to ensure accuracy, however all photographs, measurements, floor plans and distances are for illustrative purposes only. They must not be relied upon when purchasing carpets and or other fixtures & fittings. Lease details, service charges and ground rents are given as a guide only. They should be checked and confirmed by a licensed solicitor prior to exchange of contracts. The copyright of all details, photographs and floor plans remain exclusive to Goodman & Lilley.