



Asking Price £155,000

Situated in the popular location of Crownhill, this two-bedroom top-floor apartment offers a comfortable, modern living space in a convenient location. The open-plan layout combines the kitchen, dining, and lounge areas, maximising space and natural light. The kitchen includes quality appliances, plenty of storage, and spacious countertops for easy cooking. The bathroom is well-appointed with high-quality fixtures, designed for relaxation. Both bedrooms are generously sized with large windows that bring in natural light and offer pleasant views of the surrounding area. With lift access directly to the floor and two allocated parking spaces, this apartment offers added convenience. Located close to local amenities, transport links, this property is ideal for those looking for a modern, low-maintenance lifestyle. Contact us today to arrange a viewing.

novahomes

Established 2008

 01752 206040

 sales@novahomes.co.uk

 www.novahomes.co.uk

Budshead Road, Crownhill, PL6 5FW

Accommodation Comprises

Communal Entrance Hall

Secure communal entrance, Stairs and lift access to all floors.

Entrance Hall

Kitchen/Living/Dining Area 5.65m (18'6") x 3.63m (11'11")

Bedroom One 3.64m (11'11") x 3.11m (10'2")

Bedroom Two 2.48m (8'2") x 1.72m (5'8")

Bathroom 2.49m (8'2") x 1.92m (6'4")

Other Information

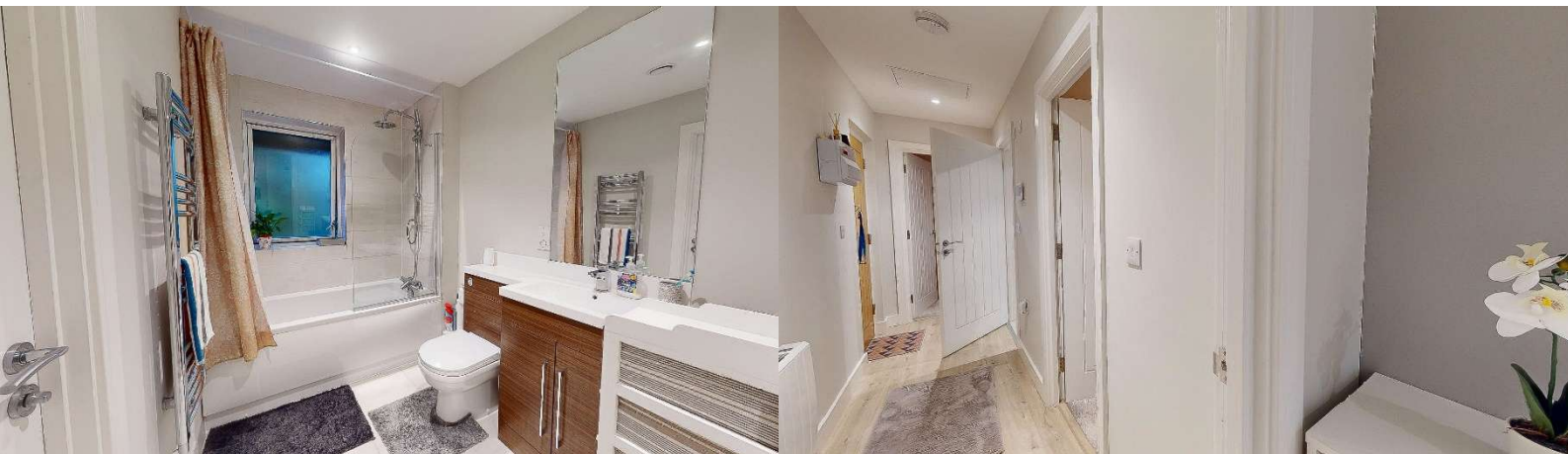
Lease Length Remaining - 995

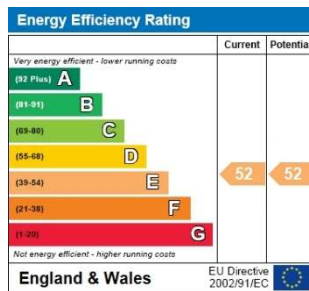
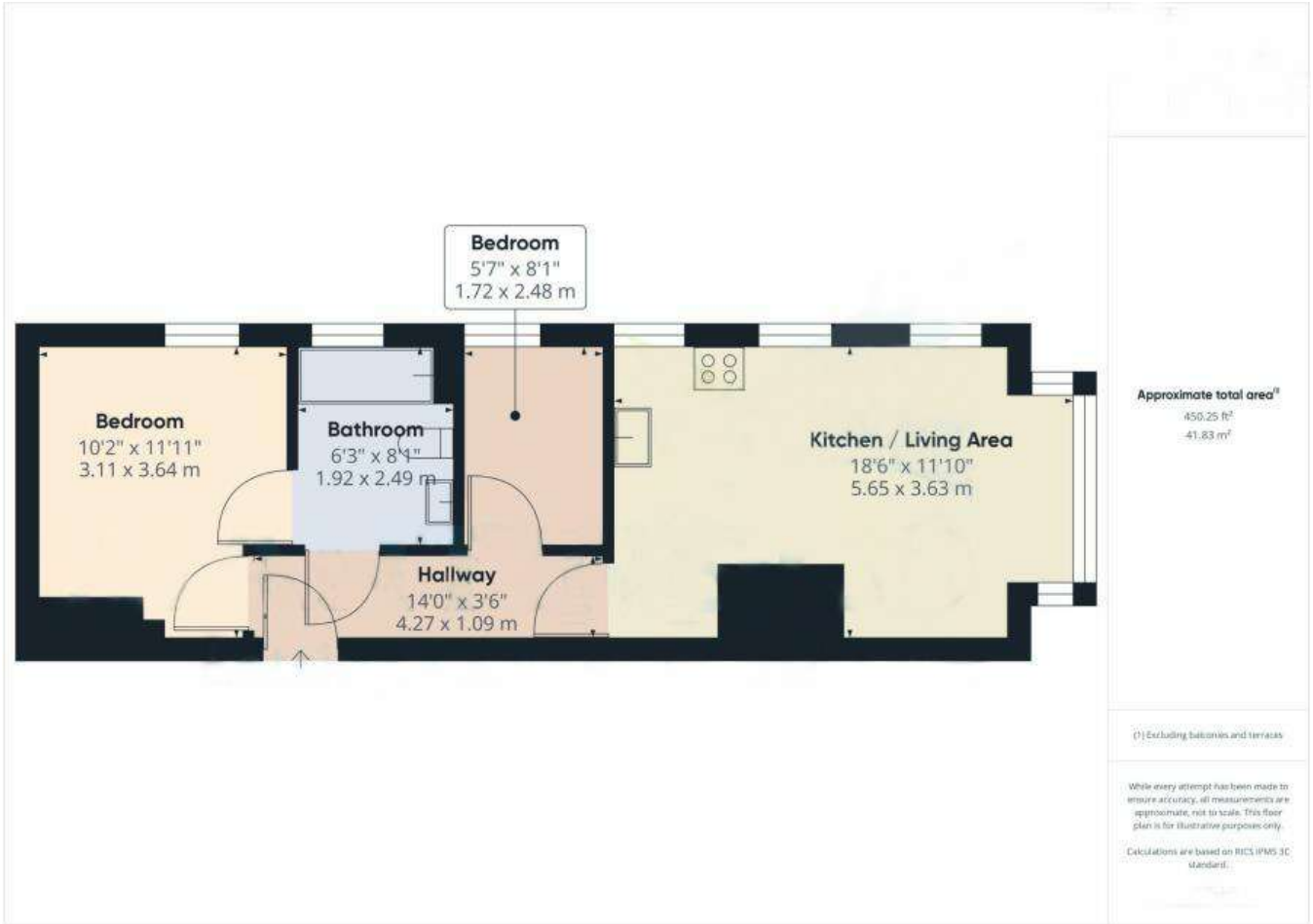
Service Charge - £718.22 every six months

Viewing Arrangements

Viewing strictly by appointment through the agent. Please respect the occupier's privacy and do not make an approach by knocking on the door.







Notice: Please note we have not tested any apparatus, fixtures, fittings, or services. Interested parties must undertake their own investigation into the working order of these items. All measurements are approximate and photographs provided for guidance only.

