



Asking Price £190,000

A delightful two double bedroom end-terrace property located in the convenient area of Galsworthy Close, Manadon, within close proximity to local schools and shopping amenities. This well-presented home offers generous living accommodation, making it ideal for first-time buyers or small families. On the ground floor, the property features an entrance porch, a bright lounge with a sliding door to the front, and a modern fitted kitchen/dining room, perfect for family meals. Upstairs, there are two double bedrooms, a modern fitted bathroom, and a store room, offering additional storage space. The property benefits from gas central heating, double glazing, and low-maintenance front and rear gardens. Additionally, it comes to the market with the advantage of no onward chain, making it a fantastic opportunity for buyers looking for a hassle-free move.

novahomes

Established 2008

 01752 206040

 sales@novahomes.co.uk

 www.novahomes.co.uk

Galsworthy Close, Crownhill, PL5 3JN

Accommodation Comprises

Ground Floor

Entrance Hall

Lounge - 18`11" x 11`5" (5.77m x 3.48m)

Kitchen/Dining Room - 18`11" x 8`9" (5.77m x 2.67m)

First Floor -

Bedroom 1 - 12`10" x 11`5" max (3.91m x 3.48m max)

Bedroom 2 - 10`10" x 8`9" (3.30m x 2.67m)

Bathroom

Landing

Store Room - 5`9 x 3`6 (1.75m x 1.07m)

Outside: -

Front - The front garden is enclosed by fencing with an access gate, the garden has been gravelled for ease of maintenance

Rear - Enclosed by a rendered wall and fencing, with a rear access gate, brick shed, paved seating area.

Viewing Arrangements

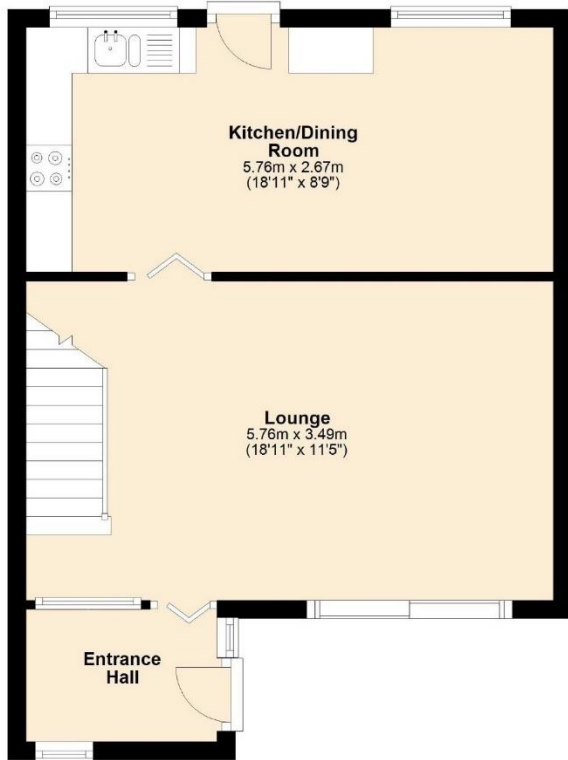
Viewing strictly by appointment through the agent. Please respect the occupier's privacy and do not make an approach by knocking on the door.





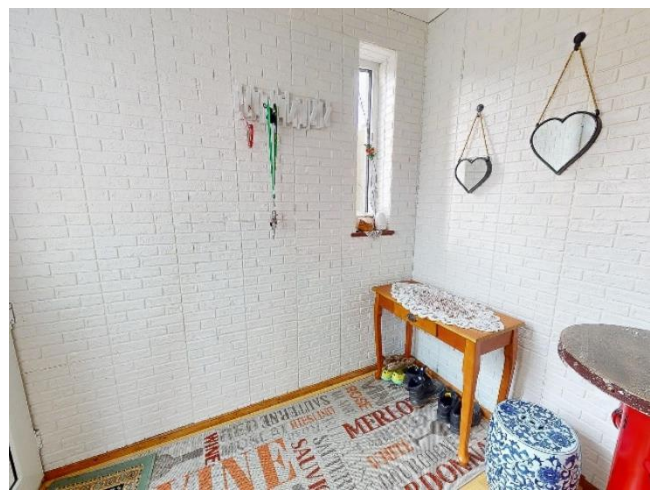
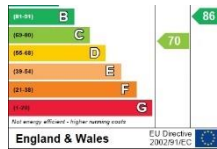
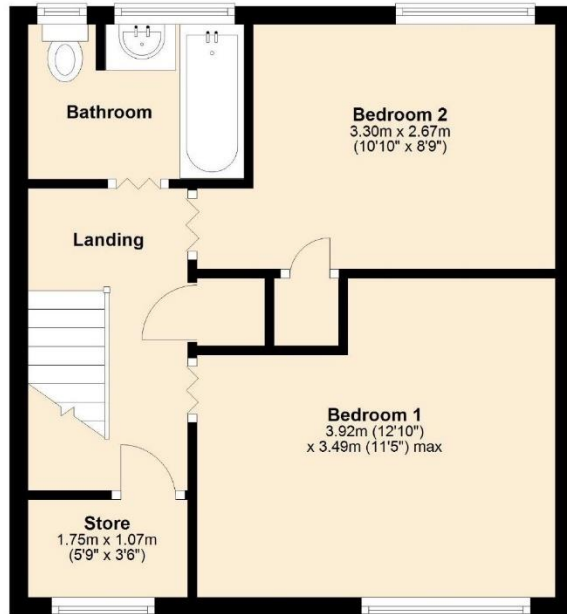
Ground Floor

Approx. 39.3 sq. metres (422.6 sq. feet)



First Floor

Approx. 36.1 sq. metres (389.0 sq. feet)



Notice: Please note we have not tested any apparatus, fixtures, fittings, or services. Interested parties must undertake their own investigation into the working order of these items. All measurements are approximate and photographs provided for guidance only.

