

Grianan West Clyne  
Brora, Sutherland, KW9 6NH



Offers Over £280,000



Grianan is a three bedroom bungalow located in the desirable area of Clynelish just north of the village of Brora on the east coast of Sutherland. The bungalow is neutrally decorated throughout and has spacious lounge and kitchen/diner, three double bedrooms (1 with en suite). The property sits in approx. 0.3 acre garden with driveway and EV charging point.







- 3 Bedroom Bungalow
- Stunning South Facing Views
- Parking for a Number of Vehicles
- EV Charging Point
- Full Fibre for Ultrafast Broadband



**PRS**  
Property Redress Scheme



Thistle House, Main Street, Golspie, KW10 6TG  
[sales@monster-moves.co.uk](mailto:sales@monster-moves.co.uk)  
[www.monster-moves.co.uk](http://www.monster-moves.co.uk)  
 Sutherland - 01408 525001  
 Inverness - 01463 263063



monstermoveshighland



monster\_moves\_estate\_agents

**rightmove**

**Zoopla**

**onTheMarket.com**

**PrimeLocation.com**

**s1homes.com**



## HALL & VESTIBULE

Through the front door and into the vestibule which has space for outdoor clothes and footwear. Then into the central hallway with access to all rooms and a linen cupboard.

## LOUNGE

21'10" x 15'6"

Turning right you are entering the large lounge with picture window giving 180 degree stunning views. The room is neutrally decorated and has a multi fuel burner on a slate hearth. A door leads through to the kitchen/diner.



## KITCHEN/DINER

28'10" x 11'8"

A large room with kitchen to one side and a dining area to the other. Pine base and wall units with integrated double oven and gas hob with hood above. Dual aspect windows giving lots of light into the room

## UTILITY

11'6" x 6'6"

From the kitchen is the utility with a rear door to the driveway. The boiler is located in here along with a washing machine and dishwasher below the worktop. There is further space for a freezer and shelves above. 2 horse pulleys hang from the ceiling.



## BATHROOM

8'7" x 6'3"

The bathroom comprises a white three piece suit:- P shape bath with overhead mains shower, pedestal wash basin and w/c. Chrome heated towel rail.



## BEDROOM 1 with EN-SUITE

13'6" x 12'9"

The principle bedroom has a large picture window with uninterrupted views south. A double fitted wardrobe and t newly fitted en suite comprising:- large shower enclosure , white wall hung wash basin and a w/c. Black heated towel rail.

## BEDROOM 2

11'7" x 11'6"

Bedroom 2 has double fitted wardrobe and view to the west and is neutrally decorated.

## BEDROOM 3

11'5" x 9'11"

A double bedroom also with panoramic views to the south and a fitted wardrobe.



Thistle House, Main Street, Golspie, KW10 6TG

[sales@monster-moves.co.uk](mailto:sales@monster-moves.co.uk)

[www.monster-moves.co.uk](http://www.monster-moves.co.uk)

Sutherland - 01408 525001

Inverness - 01463 263063



[monstermoveshighland](https://www.facebook.com/monstermoveshighland)



[monster\\_moves\\_estate\\_agents](https://www.instagram.com/monster_moves_estate_agents)





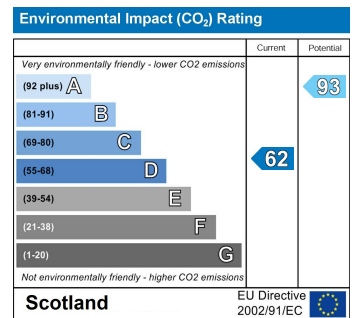
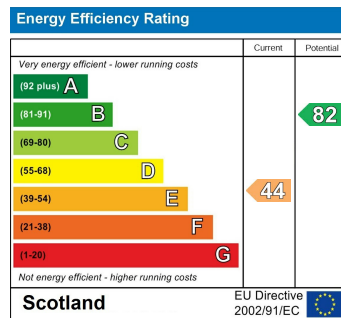


## GARDEN

The property sits centrally in the plot and is laid to grass to the front and driveway to the rear. An electric vehicle charging point is located at the rear door.

## LOCATION

Grianan is located in the sought after area of Clynelish on the north side of Brora, with its open views and proximity to the amenities that the village of Brora has to offer along with access to outdoor activities. Brora has shops, doctors, Primary School, restaurants, museum, distillery and is 60 miles north of Inverness Airport.  
What3words ///obliging.lanes.dreams



**PRS**  
Property Redress Scheme

Living Wage  
Foundation

Thistle House, Main Street, Golspie, KW10 6TG  
sales@monster-moves.co.uk  
www.monster-moves.co.uk  
Sutherland - 01408 525001  
Inverness - 01463 263063



montermoveshighland



monster\_moves\_estate\_agents

rightmove

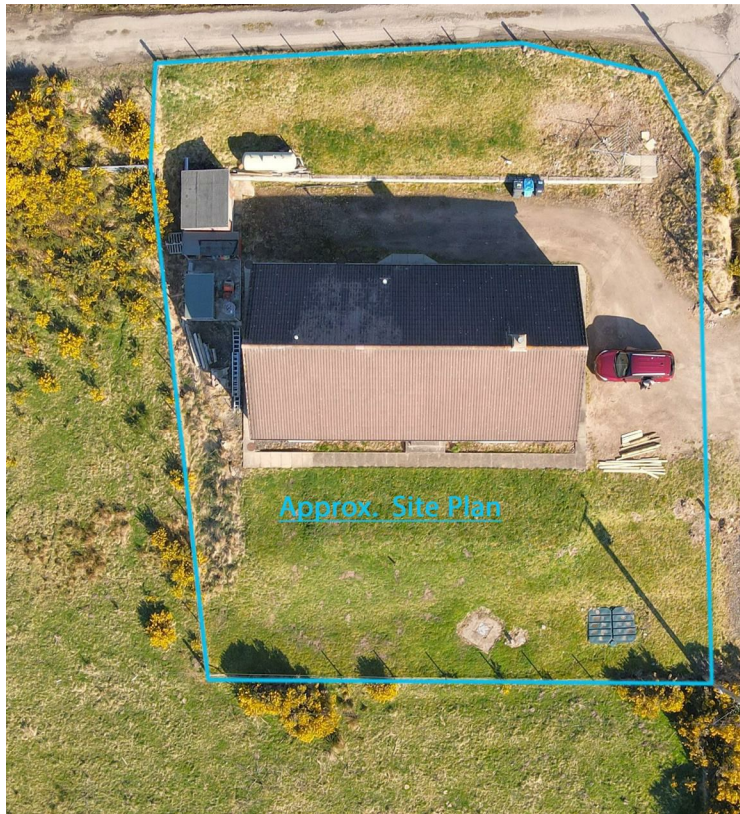
Zoopla

onTheMarket.com

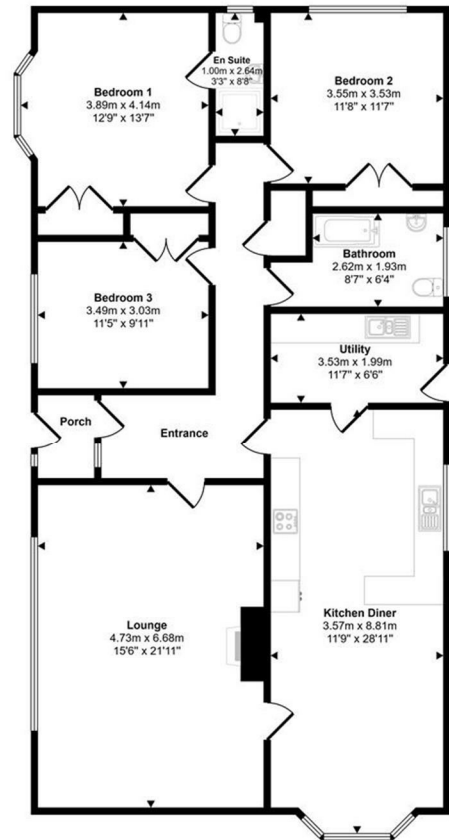
PrimeLocation.com

s1homes.com





Approx Gross Internal Area  
141 sq m / 1523 sq ft



Floorplan

This floorplan is only for illustrative purposes and is not to scale. Measurements of rooms, doors, windows, and any items are approximate and no responsibility is taken for any error, omission or mis-statement. Icons of items such as bathroom suites are representations only and may not look like the real items. Made with Made Snappy 360.



**PRS**  
Property Redress Scheme



Thistle House, Main Street, Golspie, KW10 6TG  
sales@monster-moves.co.uk  
www.monster-moves.co.uk  
Sutherland - 01408 525001  
Inverness - 01463 263063



monstermoveshighland



monster\_moves\_estate\_agents

rightmove

Zoopla

onTheMarket.com

PrimeLocation.com

s1homes.com





**Council Tax** Highland Council Band E

**Tenure** Freehold

**Entry** By mutual agreement

**Viewing** To arrange a viewing of Grianan, West Clyne, Brora, Sutherland KW9 6NH, please contact Monster Moves on 01408 525001 or email [sales@monster-moves.co.uk](mailto:sales@monster-moves.co.uk)

Under the Property Misdescription Act 1991 we endeavour to make our sales details accurate and reliable but they should not be relied upon as statements or representations of fact and they do not constitute any part of an offer of contract. The seller does not make any representations to give a warranty in relation to the property and we have no authority to do so on behalf of the seller. Services, fittings and equipment referred to in the sales details have not been tested (unless otherwise stated) and no warranty can be given as to their condition. We strongly recommend that all the information that we provide about the property is verified by yourself or your advisors. Under the Estate Agency Act 1991 you will be required to give us financial information in order to verify your financial position before we can recommend any offer to the vendor. A sonic tape measure has been used to measure this property and therefore the dimensions given are for general guidance only.



Thistle House, Main Street, Golspie, KW10 6TG

[sales@monster-moves.co.uk](mailto:sales@monster-moves.co.uk)

[www.monster-moves.co.uk](http://www.monster-moves.co.uk)

Sutherland - 01408 525001

Inverness - 01463 263063



[montermoveshighland](https://www.facebook.com/montermoveshighland)



[monster\\_moves\\_estate\\_agents](https://www.instagram.com/monster_moves_estate_agents)

