



Ramsdraigs Croft

Ramsdraigs, Dunbeath, Caithness, KW6 6EY

Ramsdraigs Croft is a 5.6 Acre croft located on the north east coast of Scotland in Caithness. Situated in a convenient location aside the A9, with stunning views of nearby hills, surrounding countryside and out over the Moray Firth. The land is arable with secure fencing, suitable for a range of uses. The croft has lapsed planning permission for a two bedroom bungalow with integral garage. Services are located nearby.



CROFT REGISTER C8542

2.2761 Hectares (5.62 acres Approx) registered Croft with the Crofters Commission

DESCRIPTION

Secure fencing flat arable ground with stone built outbuilding currently used for storage. Access via side road off the A9.

LAPSED PLANNING

17/01579/FUL Granted - 27/07/2017

ALT REF 100047604-001

Lapsed Planning Granted for 2 bedroom bungalow with built-in single garage, with driveway and entrance from a subsidiary road leading from the A9.

LOCATION

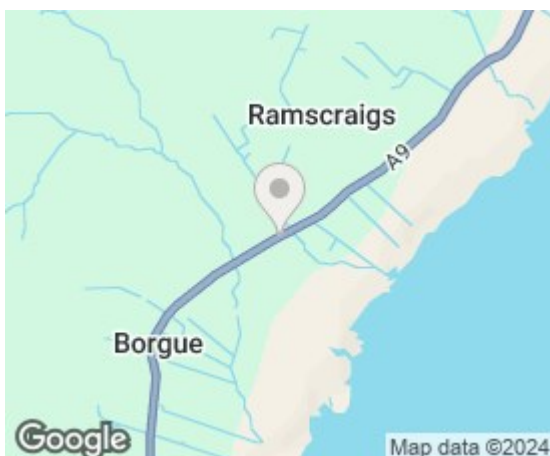
Ramskraigs Croft is located on the east coast of Caithness between Helmsdale and Wick and although it is a short drive to the majestic Caithness coastline, the Moray Firth is visible from the croft. The highest peak in Caithness, Morven and neighbouring hills sit nearby. The croft is conveniently aside the main A9 route heading north to Wick/Thurso and south to the town of Inverness. The nearby small fishing village of Dunbeath benefits from a doctors surgery, primary school (with a current school role of 30 pupils), and a small convenience store. Wick lies 20 miles north of Dunbeath where you'll find supermarkets, independent shops, cafe's, restaurants, hospital, a secondary school and other local amenities while Inverness is approx 80 miles south. Wick airport provides flights to Aberdeen where onward domestic and international flights are available.

To find this property please click on the link for What3words

<https://what3words.com/spires.shepherds.volunteered>



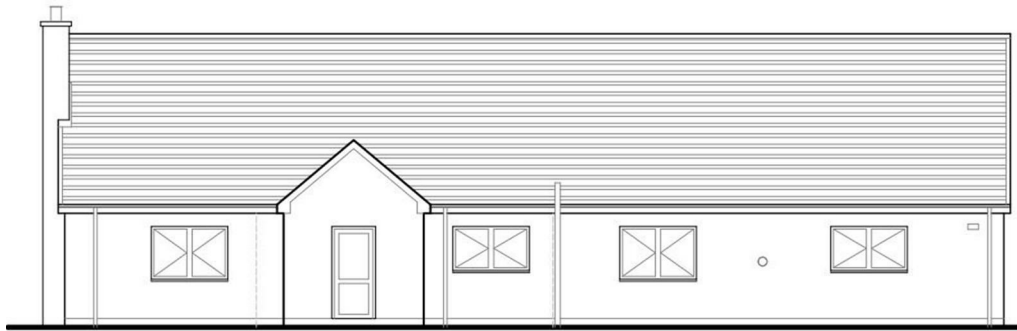
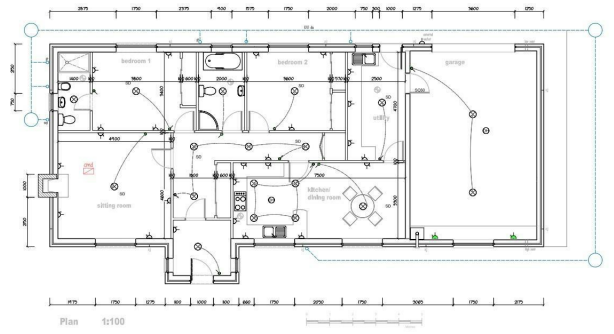
Area Map



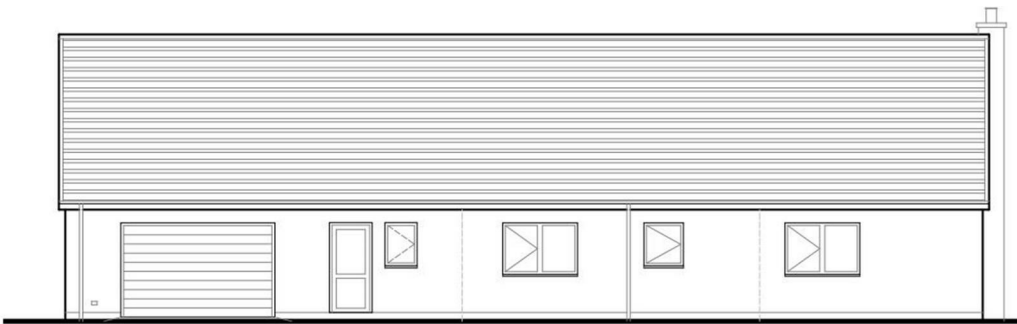




Floor Plans



South-east elevation 1:100



North-west elevation 1:100



These particulars, whilst believed to be accurate are set out as a general outline only for guidance and do not constitute any part of an offer or contract. Intending purchasers should not rely on them as statements of representation of fact, but must satisfy themselves by inspection or otherwise as to their accuracy. No person in this firm's employment has the authority to make or give any representation or warranty in respect of the property.