

# Monster Moves



## The Marine Shore Street

Thurso, Caithness, KW14 8BN

Offers In The Region Of

£225,000



6



6



3



F

An opportunity has arisen to purchase this magnificent property located on Shore Street Thurso, overlooking Thurso Bay on the North Coast of Scotland along the NC500 Tourist Route. The Marine has been beautifully renovated and stylishly upgraded to be an amazing home with a unique outlook. The property comprises of 6 bedrooms, 6 bathrooms, dining room, sitting room, office, kitchen, sun lounge, boiler room, laundry and a courtyard with decking and parking for many cars. Furniture is available by separate agreement.



## GROUND FLOOR

Entrance to the property is through the middle door and takes you into the hall leading to the dining room, which also has an external door. Along the corridor are three bedrooms with en suite and impressive stairs to the upper floors. At the end of the corridor is another external door,

## DINING ROOM 25'3" x 15'1"

A large dining room with dual aspect windows, fitted tartan carpet and access to the sun lounge. Access to the cloakroom.

## SUN LOUNGE 18'8" x 10'9"

An amazing room with 180 degree view of Thurso Bay and Scrabster beyond through floor to ceiling windows. A perfect room for watching the surfers in the bay.

## CLOAKROOM

A cloakroom with Wash basin and w/c. Blue tiled feature wall.

## BEDROOM 1 with EN SUITE 15'8" x 13'1"

This spacious room has dual aspect windows overlooking Thurso bay. Beautifully decorated and fitted wardrobes, carpets and curtains. The en suite comprise; walk in shower, wash basin and w/c , heated towel rail

## BEDROOM 2 with EN SUITE 15'5" x 9'10"

A double bedroom with en suite accessible shower room.

## BEDROOM 3 with EN SUITE 19'0" x 14'5"

A quirky shaped room with an amazing en suite bathroom. A beautiful free standing unit with a sit on top wash basin

## FIRST FLOOR

A curved stairs take you to the first floor.

## SITTING ROOM

The sitting room has dual aspect windows, oak flooring and a feature fireplace with multi fuel stove

## KITCHEN

A large kitchen with dual aspect windows, can be accessed from both the hall and sitting room where the oak flooring continues along the corridor with the curved wall and into the kitchen with the central feature an Aga stove (gas hob and electric ovens). The bespoke 'Ashley Ann' kitchen has fitted wall units, base units and dresser in wood along with an island with storage and dishwasher below and granite worktop with inset sink . The fridge/freezer is included.

## BEDROOM 4 13'9" x 11'9"

The bedroom has plenty of space for large free standing bedroom furniture.

## BEDROOM 5

An unusual shaped room with dual aspect windows and double fitted wardrobes with sliding doors.

## OFFICE 10'5" x 6'6"

A single bedroom that is presently being used as an office.

## BATHROOM 10'9" x 6'6"

The bathroom comprises; bath, wash basin, w/c and separate shower enclosure.

## TOP FLOOR & BALCONY

The curved stairwell leads up to the attic floor and bedroom 6 with en suite.

## BEDROOM 6 with EN SUITE 16'4" x 11'9"

Located on the second floor is bedroom 6 which has dual aspect windows one with Juliette balcony over looking Thurso Bay and on the opposite side of the room is a balcony over looking the town centre. An en suite shower room. This room is presently used by the owners as an evening sitting room.

## LAUNDRY 16'4" x 9'10"

Access to the laundry room is via the courtyard and has plumbing for washing machines and drying facilities. Next door is the boiler house

## BOILER ROOM 9'10" x 9'10"

The boiler room houses the boiler and has space for bikes and storage.

## PARKING

There is off street parking in the courtyard for approx 6 cars and a decked area for sitting out.

## ADDITIONAL INFORMATION

Council Tax Band - F

EPC Rating - C

Built over 100 years ago renovated in 2010

Town Gas Central Heating

Double Glazing

Mains showers

## LOCATION

Located on the North Coast 500 is The Marine, whilst situated in the town of Thurso it also sits over looking Thurso Bay. Thurso has local amenities: shops, doctors, schools, dentists, Tescos, Lidl's that you would expect in a small town. This coastline is well known amongst kayakers and surfers and the wildlife and flow country inland are a bird watchers dream.

## VIRTUAL TOURS

360 TOUR - <https://www.madesnappy.co.uk/tour/1g171g5f85>

VIRTUAL TOUR - <https://youtu.be/4qHYLTe0r98>

DRONE FOOTAGE - <https://youtu.be/ymlheHJOE8c>

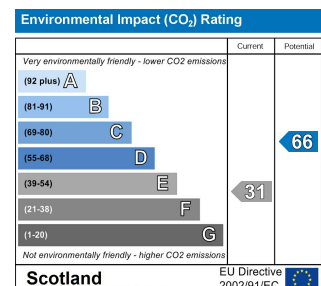
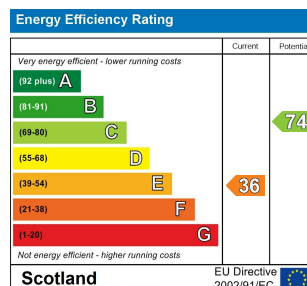
## Area Map

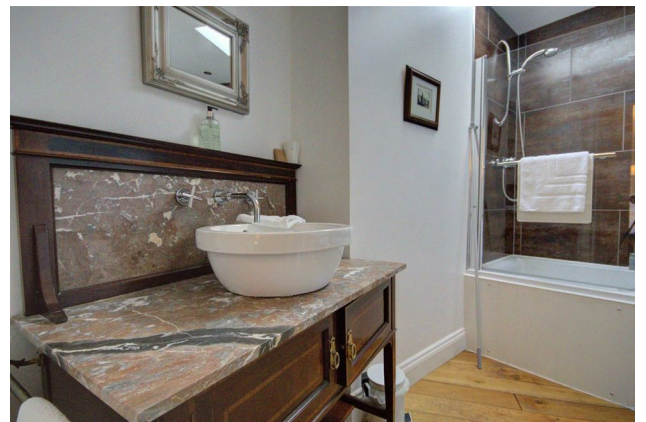


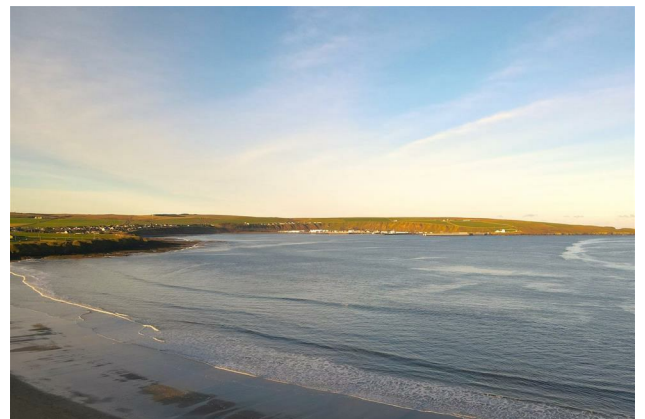
## Floor Plans



## Energy Efficiency Graph







These particulars, whilst believed to be accurate are set out as a general outline only for guidance and do not constitute any part of an offer or contract. Intending purchasers should not rely on them as statements of representation of fact, but must satisfy themselves by inspection or otherwise as to their accuracy. No person in this firm's employment has the authority to make or give any representation or warranty in respect of the property.