

Eastern Avenue, Redbridge

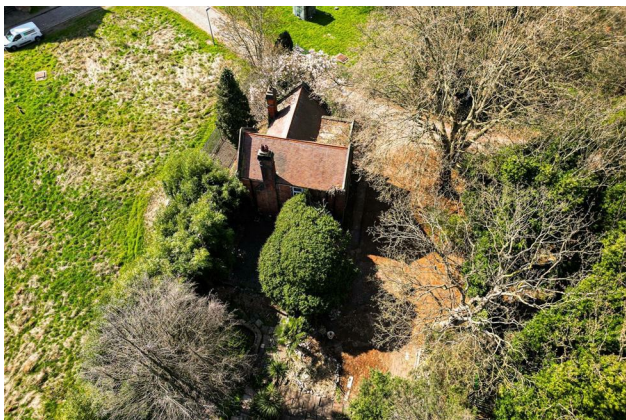
Offers In Excess Of £900,000 Freehold

- Chain free
- Development potential (STPP)
- Spacious plot
- Great road and transport links nearby

- Detached

Petty Son & Prestwich are pleased to offer this rare and exciting opportunity to acquire a three bedroom detached home brimming with potential!

In need of modernisation, this property presents an incredible chance for those eager to put their personal touch on a home with endless possibilities for improvement and expansion. The house, though in need of updating, presents an excellent canvas for creating a bespoke family home to your exact preferences. The spacious accommodation is ideal for a growing family or as a renovation project, allowing you to add your personal touch. One of the standout features of this property is the generous surrounding plot, offering significant development potential (subject to the necessary planning permissions). This additional land provides the opportunity for further construction, making it a truly unique find in this location. The property is well-positioned within easy reach of local amenities, schools, and transport links, making it an ideal choice for families and investors alike. This is a rare opportunity to acquire a home with such potential in a prime location.



EPC Rating: G7
Council Tax Band: E

Reception Room
15'8" x 13'8"

Dining Room
8'9" x 8'9"

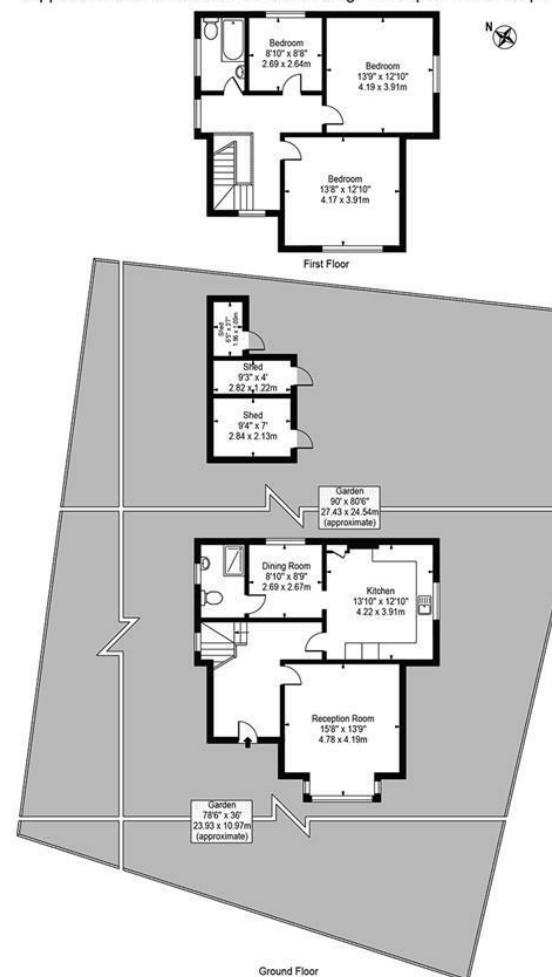
Kitchen
13'10" x 12'9"

Bedroom
13'8" x 12'9"

Bedroom
13'8" x 12'9"

Bedroom
8'9" x 8'7"

Approx. Gross Internal Area 1313 Sq Ft - 121.98 Sq M
(Excluding Outbuilding)
Approx. Gross Internal Area Of Outbuilding 131 Sq Ft - 12.17 Sq M



For Illustration Purposes Only - Not To Scale

This floor plan should be used as a general outline for guidance only and does not constitute in whole or in part an offer or contract. Any intending purchaser or lessee should satisfy themselves by inspection, searches, enquiries and full survey as to the correctness of each statement. Any areas, measurements or distances quoted are approximate and should not be used to value a property or be the basis of any sale or let.