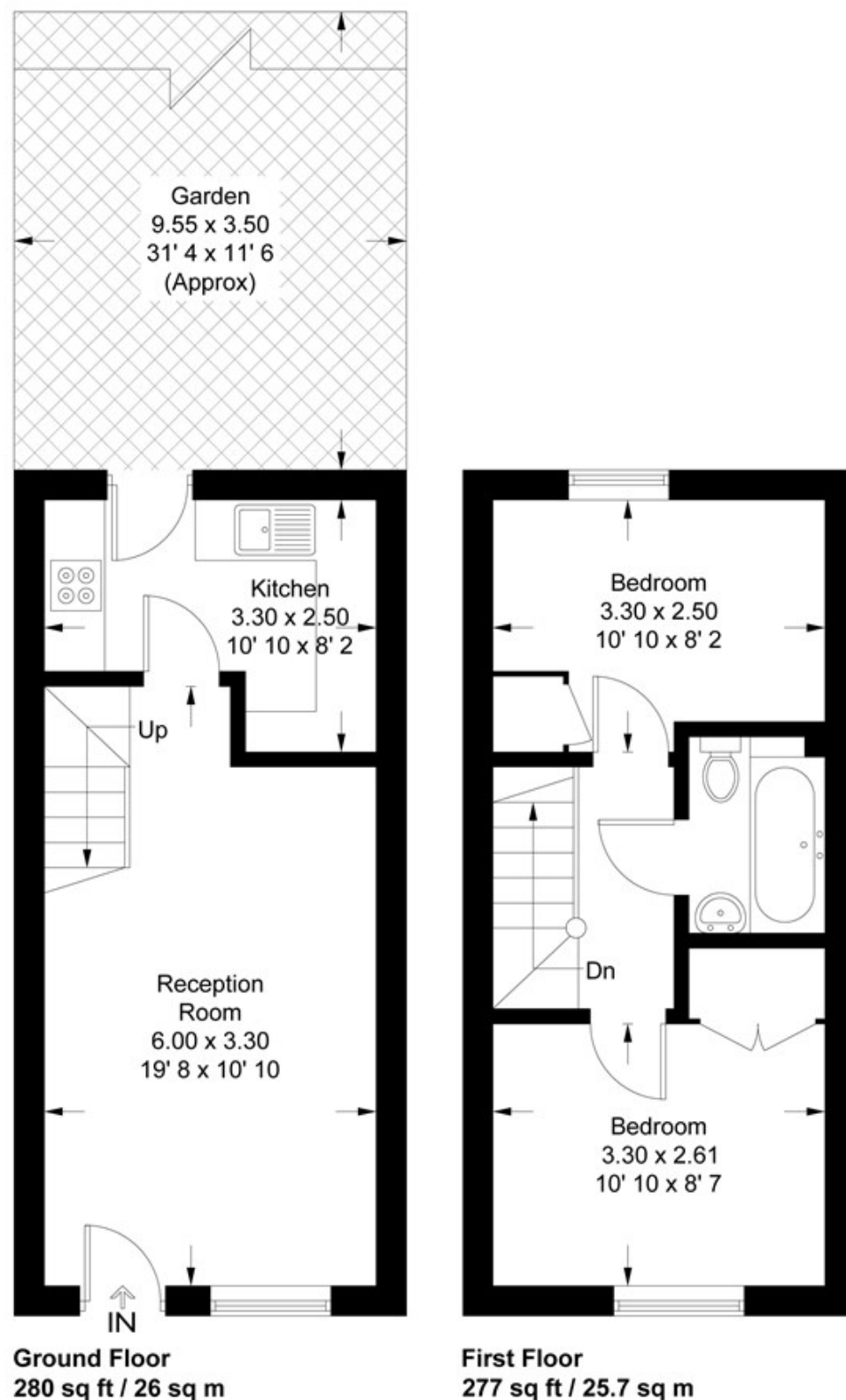


Trafalgar Place

Approximate Gross Internal Area = 557 sq ft / 51.7 sq m



This plan is not to scale and must be used as layout guidance only. All measurements and areas are approximate and should not be relied upon to provide accurate information. This plan must not be relied upon when making property valuations, design considerations or any other such relevant decisions. We accept no responsibility or liability (whether in contract, tort or otherwise) in relation to any loss whatsoever arising from or in connection with any use of this plan or the adequacy, accuracy or completeness of it or any information within it.



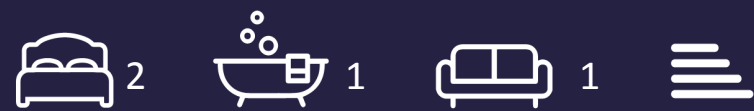
Trafalgar Place, Wanstead

Asking Price £500,000 Freehold

- Two bedrooms
- Fantastic Wanstead location
- Spacious lounge
- Mid terraced house
- Chain free
- Compact garden

Trafalgar Place, Wanstead

Petty Son & Prestwich are pleased to offer to market this two-bedroom middle terrace house located just 0.4 Miles from Snaresbrook station and Wanstead High street.



Council Tax Band: D

Positioned in a small, quiet cul-de-sac just off Hermon Hill, Trafalgar Place is perfectly situated for not only Wanstead High Street and Station but also South Woodford Station and George Lane shops (0.7 Miles). Leyton flats are also a short walk away (0.5 Miles) providing forest walks towards Leytonstone and Hollow Pond where you can enjoy ice creams and boats during the summer. On stepping inside you will find a spacious sitting room which has plenty of space to accommodate a dining table and chairs as well as a large sofa. To the rear of the house, overlooking the garden, the kitchen is fitted with a range of wood effect cabinets complemented by contrasting work surfaces and integrated appliances. Moving to the first floor there are two good sized bedrooms, the principle being a comfortable double room. The family bathroom is fitted with a white suite and completes the accommodation. The garden commences with a patio area, perfect for al-fresco dining in the better weather. The remainder is lawned with shrub borders.

Reception Room

19'8 x 10'10

Kitchen

10'10 x 8'2

Bedroom

10'10 x 8'7

Bedroom

10'10 x 8'2

