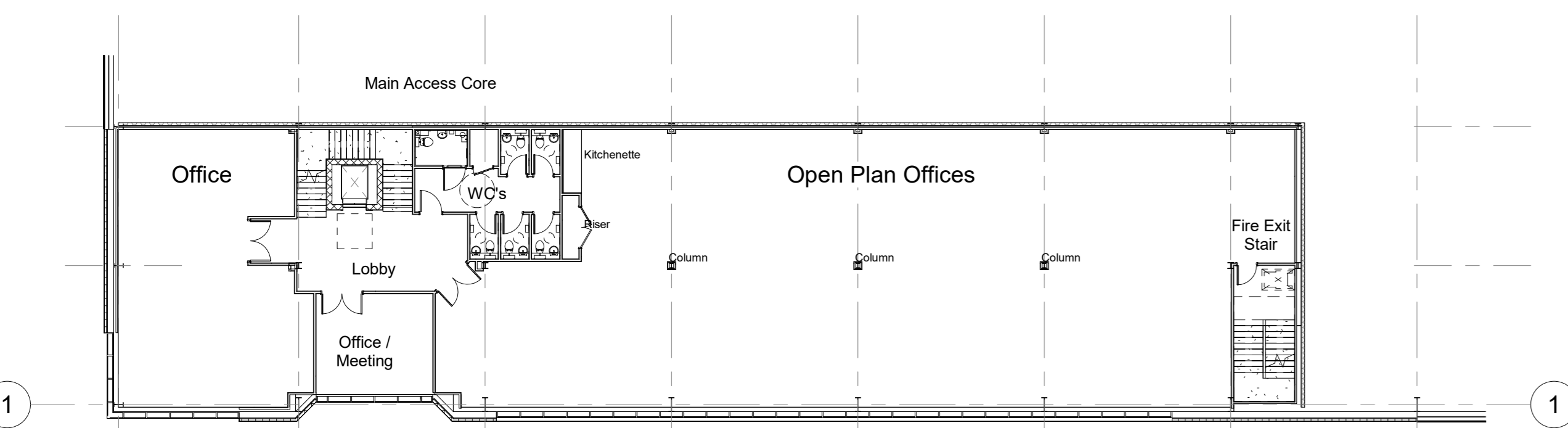


Proposed Ground Floor

1:200



Proposed First Floor Offices

1:200

PROPOSED UNIT 2
205,000 sqft 9,755 sqm
Total Gross Internal Area

Footprint 100,000 sqft 9,290.3 sqm
First Floor offices 5,000 sqft 464.5 sqm

15m clear to underside of Haunch

Finish floor level - S1.80 AOD

All areas are measured as gross internal

SCALE 1:200

0 2 4 10m

Project Title: Proposed Industrial Development

Client: Wyngrove Limited

Status: PLANNING

Scale: As indicated

Drawn By: NBB

Checked By: JMR

Date: 04.22

Drawing Title: Unit 02 - Proposed GA Plans

Job/Draw No: 17475 - (P) 127

Rev: 1

2/20, 20/20 North, Kingsway, 1st Floor, London, EC2A 4PU

2/20, 20/20 North, Kingsway, 1st Floor, London, EC2A 4PU

2/20, 20/20 North, Kingsway, 1st Floor, London, EC2A 4PU

2/20, 20/20 North, Kingsway, 1st Floor, London, EC2A 4PU

2/20, 20/20 North, Kingsway, 1st Floor, London, EC2A 4PU

2/20, 20/20 North, Kingsway, 1st Floor, London, EC2A 4PU



A R C H I T E C T S

www.harrispartnership.co.uk