



87 Caspian Way

Purfleet, RM19 1LA

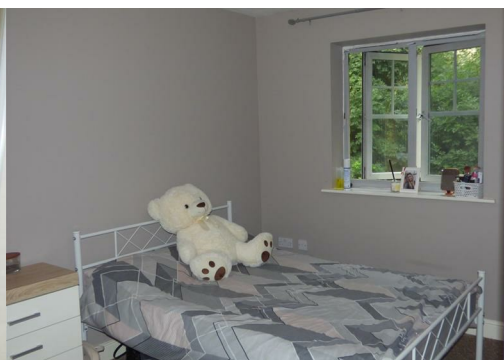
Asking Price £180,000



Smooth Move Estates are pleased to present a one-bedroom low maintenance top floor apartment. Located just 0.5 miles distance from Purfleet C2C station, well suited to commuters.

This property features a modern fitted kitchen with appliances, a modern bathroom, double glazed windows and door entry system. It is an ideal starter home for first-time buyers or investment for buy-to-let. The property benefits from residents' parking, and a communal entrance. The tenure of this property is leasehold, with 105 years remaining.

The property is 3.5 miles from popular Lakeside Shopping Centre and Retail Park and just over half a mile to the local convenience store and other shops.



Entrance Hall

Carpeted entrance leading to bathroom, bedroom and lounge, it contains 2 large storage cupboards, 1 housing the Pulsa Coil immersion heater.

Living Room 12'1" x 11'1" (3.7m x 3.4m)

White painted walls and ceiling with beige carpet, 2 x UPVC double glazed windows to rear and side aspect, making the the room light and airy, panel heater under rear window.

Bedroom 11'1" x 8'6" (3.4 x 2.6)

Painted grey, with beige carpet, white UPVC window to rear aspect with panel heater underneath.

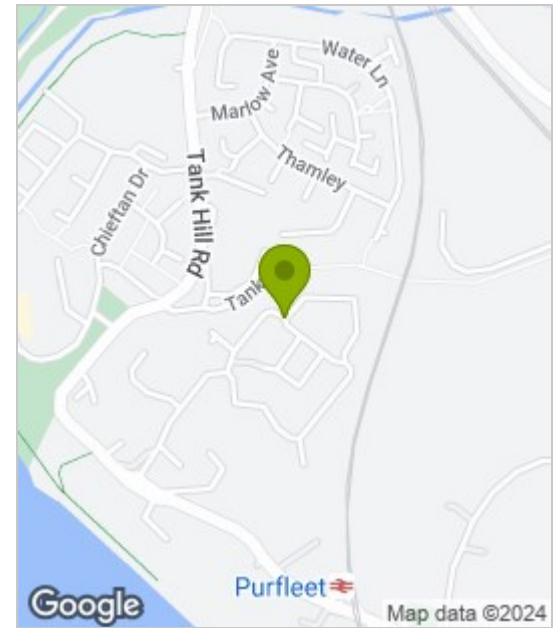
Kitchen 8'2" x 5'6" (2.5 x 1.7)

Beech effect fitted kitchen, a selection of high and low level units with black granite effect work top and cream tiles. Kitchen includes a Statesman white electric oven, white Beko electric hob with extractor above, white Indesit 7kg washing machine, white Panasonic Fridge Freezer, 1.5 Stainless steel sink with chrome mixer and white UPVC window to side aspect.

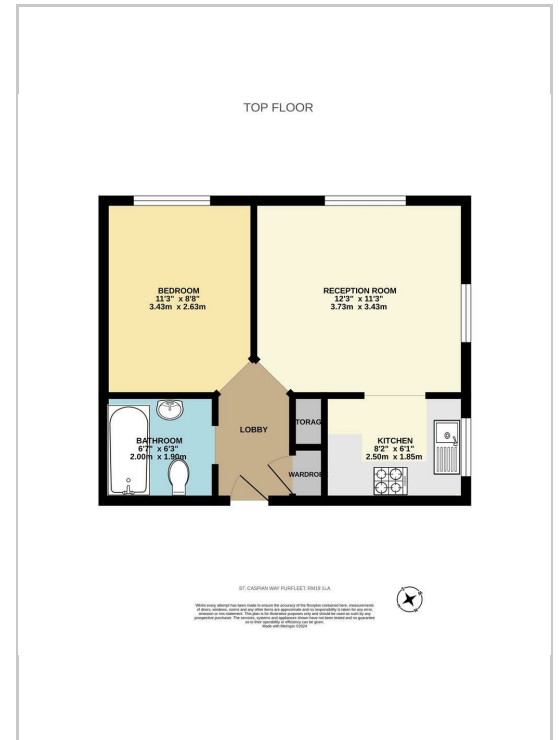
Bathroom 6'6" x 6'2" (2 x 1.9)

Bathroom suite comprising of WC, basin & bath with chrome mixer shower attachment and shower screen, heated towel rail and grey tiled floor. Partially tiled in white tiles with charcoal trim.

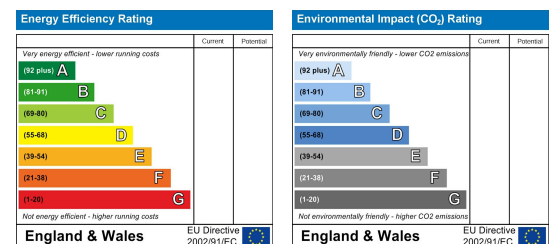
Area Map



Floor Plans



Energy Efficiency Graph



These particulars, whilst believed to be accurate are set out as a general outline only for guidance and do not constitute any part of an offer or contract. Intending purchasers should not rely on them as statements of representation of fact, but must satisfy themselves by inspection or otherwise as to their accuracy. No person in this firm's employment has the authority to make or give any representation or warranty in respect of the property.