

william  
h brown

Select

Half Moon Inn  
Hungate Street  
Aylsham



LOCATED IN THE HEART OF THE POPULAR MARKET TOWN OF AYLSHAM, THIS INDIVIDUAL PROPERTY PRESENTS A UNIQUE OPPORTUNITY TO PURCHASE A STUNNING FOUR BEDROOM COTTAGE FULL OF CHARACTER AND CHARM WITH TWO SELF-CONTAINED ANNEX PROPERTIES

LOCATED IN THE HEART OF THE POPULAR MARKET TOWN OF AYLSHAM, THIS INDIVIDUAL PROPERTY PRESENTS A UNIQUE OPPORTUNITY TO PURCHASE A STUNNING FOUR BEDROOM COTTAGE FULL OF CHARACTER AND CHARM WITH TWO SELF-CONTAINED ANNEX PROPERTIES

## Half Moon Inn, 19 Hungate Street, Aylsham, Norwich, Norfolk, NR11 6AA

2

### RECEPTION HALLWAY

A spacious hallway with terracotta tiled flooring, stairs rising to first floor accommodation and doors to the family room, WC and dining room.

### CLOAKROOM

With low level WC and hand wash basin, window to front aspect.

### SNUG

This room has a lovely feel to it with exposed beams and feature former bread ovens offering a slice of history.

### DINING ROOM

Tiled flooring, feature fireplace with wood burning stove, windows with wooden shutters to front aspect, radiator, doors to kitchen and sitting room.

### KITCHEN

A modern fitted kitchen comprising:- a range of storage units, built in double oven and four ring gas hob, window to rear aspect, window to front aspect with wooden shutters, radiator, space for fridge freezer, wooden flooring, drainer sink unit and plumbing for dishwasher.

### SITTING ROOM

A stunning reception space full of character with exposed beams, a beautiful inglenook fireplace with a feature electric fire, two radiators, doors opening to court yard garden area.

### LANDING

Built in storage cupboard and access to all first floor rooms.





# Select





### PRINCIPLE BEDROOM

A vaulted ceiling adds to the feeling of space, exposed beams, dual aspect windows, radiator, built in wardrobe and door to en-suite.

### EN-SUITE BATHROOM

A modern white suite comprising: - low level WC, wash hand basin and fully tiled walk in shower cubicle. Heated towel rail.

### BEDROOM

This bedroom goes front to back with dual aspect windows, radiator.

### BEDROOM

Window to rear aspect, radiator, built in wardrobe, feature brick fireplace.

### BEDROOM

Vaulted ceiling and exposed beams, radiator and window to front aspect.

### BATHROOM

Window to front aspect, low level WC, wash hand basin with storage under, panel bath and radiator.

### HARVEST MOON COTTAGE

A beautiful two bedroom cottage with a kitchen, WC, sitting room and shower room.

### MOONBEAM COTTAGE

A one bedroom ground floor cottage benefitting from a sitting room, kitchen, double bedroom and shower room.





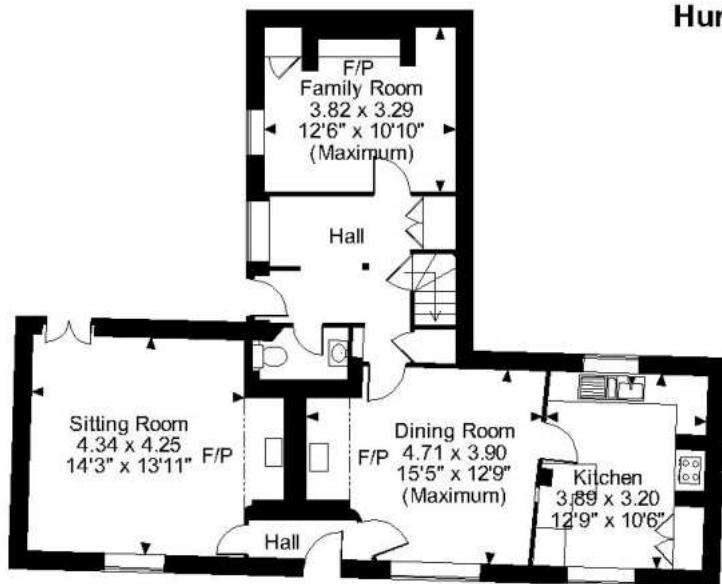
EPC  
Exempt

## EXTERNAL

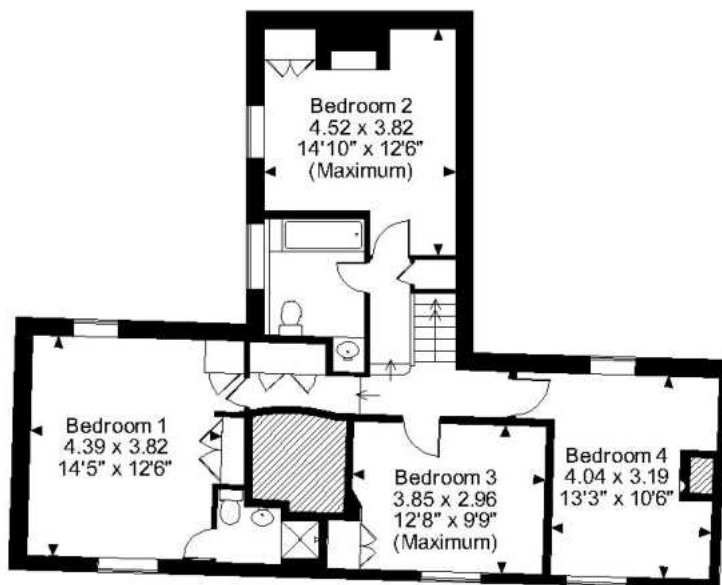
All three properties are accessed via gated driveway which has a turning circle and covered parking. Both the main house and Harvest Moon cottage have courtyard gardens while Moonbeam cottage enjoys an enclosed garden laid to lawn with flower and shrub borders. In addition there is an outbuilding and covered seating area.



**Hungate Street, Aylsham, Norwich**



**Ground Floor**



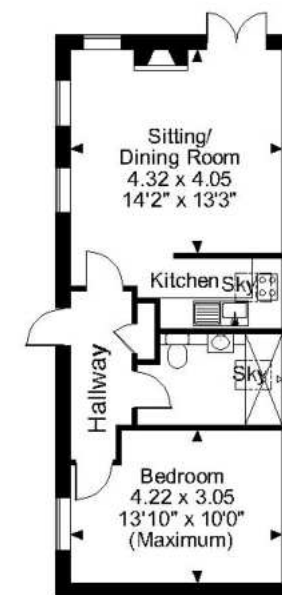
**First Floor**



**Harvest Moon Cottage  
Ground Floor**



**Harvest Moon Cottage  
First Floor**



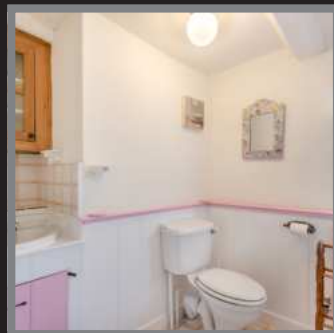
**Moonbeam Cottage**

**FOR ILLUSTRATIVE PURPOSES ONLY - NOT TO SCALE**

The position & size of doors, windows, appliances and other features are approximate only.

© ehouse. Unauthorised reproduction prohibited. Drawing ref. dig/8592290/JRD

# Select



Located in the heart of the popular market town of Aylsham, this individual presents a unique opportunity to purchase a stunning four bedroom cottage, believed to be 500 years old, full of character and charm with two self-contained annex properties. The main cottage has been sympathetically updated by the present owner. Currently used as popular holiday lets, Harvest Moon cottage is approx. 620 square feet and boasts two bedrooms, a sitting room, kitchen diner, WC and shower room. Moonbeam cottage is a one bedroom ground floor property boasting sitting room, kitchen, bedroom and bathroom. All three properties have had replacement heating boilers. In addition there is a private rear garden, ample parking and storage.

Viewing by appointment with our  
Select Consultant on

**01603 221797**

or email [select.norwich@sequencehome.co.uk](mailto:select.norwich@sequencehome.co.uk)

William H Brown, 5 Bank Plain, Norwich, Norfolk NR2 4SF

**01263 735252**

or email [Aylsham@williamhbrown.co.uk](mailto:Aylsham@williamhbrown.co.uk)

William H Brown, 23 Market Place, Aylsham, Norfolk NR11 6EL

To view this property's virtual tour,  
or to see all our properties, visit

[www.williamhbrown.co.uk](http://www.williamhbrown.co.uk)



1. MONEY LAUNDERING REGULATIONS 2003 Intending purchasers will be asked to produce identification documentation at a later stage and we would ask for your co-operation in order that there will be no delay in agreeing the sale. 2. These particulars do not constitute part or all of an offer or contract. 3. The measurements indicated are supplied for guidance only and as such must be considered incorrect. Potential buyers are advised to recheck measurements before committing to any expense. 4. We have not tested any apparatus, equipment, fixtures, fittings or services and it is in the buyers interest to check the working condition of any appliances. 5. Where an EPC, Home Report or, under former legislation a Home Information Pack, is held for this property, it is available for inspection at the branch by appointment. If you require a printed version, you will need to pay a reasonable reproduction charge reflecting printing and other costs. 6. We are not able to offer an opinion either verbal or written on the content of the Home Information Pack and this must be obtained from you legal representative. 7. While we take care in preparing the HIP, a buyer should ensure that his/her legal representative confirms as soon as possible all matters relating to title including the extent and boundaries of the property and other important matters before exchange of contracts.