

william
h brown

Select

Mill View
Stow Hill
Paston



A SPACIOUS, WELL-PROPORTIONED FOUR BEDROOMED HOUSE SET IN GARDENS AND GROUNDS OF APPROXIMATELY 2/3 OF AN ACRE (STMS)

A SPACIOUS, WELL-PROPORTIONED FOUR BEDROOMED HOUSE SET IN GARDENS AND GROUNDS OF APPROXIMATELY 2/3 OF AN ACRE (STMS)

Mill View, Stow Hill, Paston, NR28 9TG

2

RECEPTION HALL

With door in from the front aspect, fitted storage cupboards. Stairs to first floor. Door opens to a rear hallway with door to the rear aspect.

CLOAKROOM

With WC, hand wash basin with storage under, parquet flooring.

KITCHEN

This generous kitchen has windows to the front aspect and has an excellent range of fitted kitchen units including base cupboard units, wall-mounted storage cabinets and larder cupboards. Appliances include; double oven, hob, and fitted dishwasher. A peninsula bar provides further workspace having storage under and glazed display cabinets over, this divides the room between the kitchen and the living area. Attractive tiled flooring. From the living area, a glazed door opens into the sitting room and an open archway leads to the dining room.

DINING ROOM

A lovely formal dining room once again with tiled flooring as in the kitchen, fitted storage.

UTILITY ROOM

A useful utility room with further door out, work surface with storage under and inset stainless steel sink. Wall-mounted storage cupboards, plumbing for washing machine and this room also houses the boiler supplying domestic hot water and central heating system.







SITTING ROOM

This lovely well-proportioned sitting room has windows to two aspects and sliding patio doors to a third aspect offering lovely views into the garden, with the patio doors opening onto a paved terrace

area. A focal point is provided by a fireplace with attractive surround, which houses a wood burning stove on raised hearth. There are glazed doors from both the kitchen and the reception hall.

BATHROOM

With white suite comprising bath having mixer tap and shower attachment, WC, bidet and hand wash basin. Shower in corner cubicle.



BEDROOM THREE

A double bedroom with window to front aspect.

BEDROOM FOUR/OFFICE

This could make a lovely double bedroom with window to rear aspect, or readily doubles as a home office.

FIRST FLOOR

LANDING

With stairs up from the reception hall, Velux window.

PRINCIPAL BEDROOM

Double bedroom with Velux windows offering views towards Paston Mill.

EN-SUITE

Shower in oversized cubicle, bidet, WC and hand wash basin. Velux window.

DRESSING ROOM/WALK-IN WARDROBE

Offering fantastic storage with fitted rails.

BEDROOM TWO

Another double bedroom, and as with the principal bedroom, Velux windows offer views towards Paston Mill. Deep double cupboard.

EN-SUITE

With shower in cubicle, WC and hand wash basin. Bidet.





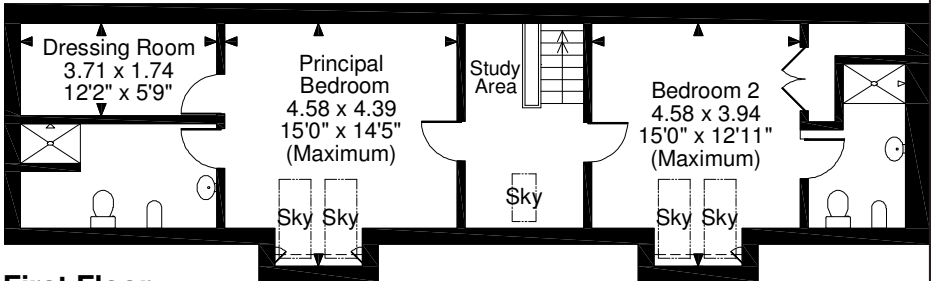
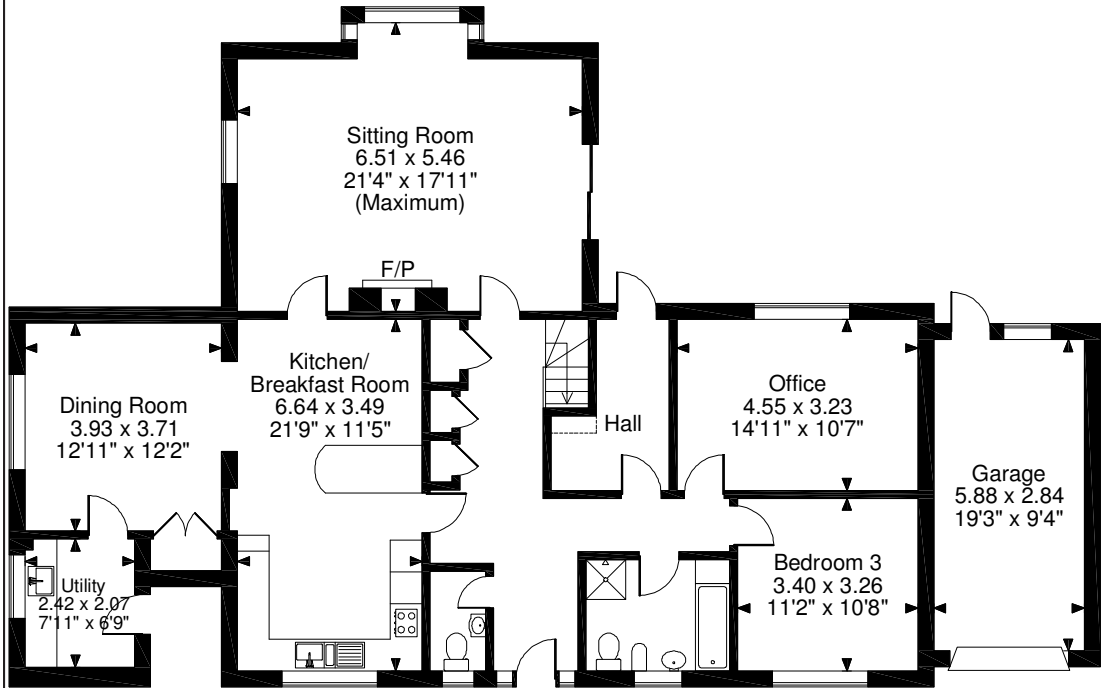
accessed from the sitting room. The garden continues to the west of the property running downhill, within this area of garden there are a number of sheds ideal for storage or potentially home offices, or even hobby rooms! In total the gardens and grounds extend to approximately 2/3 of an acre (STMS).



EXTERNAL

The property is approached from the road via a gravel driveway providing ample parking, there is access from the driveway past the property to the garage which has up and over door and personal door to the rear. The gardens immediately around the property are laid to lawn with a number of specimen shrubs, and a patio area to the rear

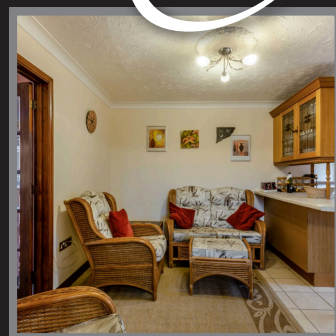
Mill View, Stow Hill, North Walsham, Norfolk



Ground Floor

First Floor

FOR ILLUSTRATIVE PURPOSES ONLY - NOT TO SCALE
 The position & size of doors, windows, appliances and other features are approximate only.
 □ □ □ Denotes restricted head height
 © ehouse. Unauthorised reproduction prohibited. Drawing ref. dig/8528359/JRD



This spacious property stands close to Paston Mill to the south of the popular seaside village of Mundesley and offers spacious, flexible three/four bed roomed accommodation in gardens and grounds extending to approximately 2/3 of an acre (STMS). The accommodation includes well-proportioned sitting room with views over the garden and wood burning stove, open plan kitchen/living/dining area as well as a separate utility. There is a ground floor bathroom and two bedrooms, one of which could readily serve as a home office if required. On the first floor, there are a further two double bedrooms, both of which having en-suite shower rooms, and the principal bedroom also benefiting from having a dressing room. Externally, there gardens and grounds, which include a number of specimen trees, extend to 2/3 of an acre (STMS), with ample parking and garage. Viewings are essential!

Viewing by appointment with our
Select Consultant on

01603 221797

or email select.norwich@sequencehome.co.uk

5 Bank Plain, Norwich, Norfolk, NR2 4SF

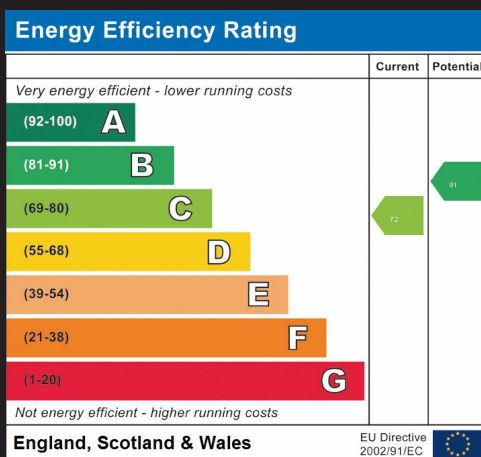
01692 402861

or email northwalsham@sequencehome.co.uk

16 Market Street, North Walsham, Norfolk, NR28 9BZ

To view this property's virtual tour,
or to see all our properties, visit

williamhbrown-select.co.uk



1. MONEY LAUNDERING REGULATIONS Intending purchasers will be asked to produce identification documentation at a later stage and we would ask for your co-operation in order that there will be no delay in agreeing the sale. 2. These particulars do not constitute part or all of an offer or contract. 3. The measurements indicated are supplied for guidance only and as such must be considered incorrect. Potential buyers are advised to recheck measurements before committing to any expense. 4. We have not tested any apparatus, equipment, fixtures, fittings or services and it is in the buyers interest to check the working condition of any appliances. 5. Where an EPC, Home Report or, under former legislation a Home Information Pack, is held for this property, it is available for inspection at the branch by appointment. If you require a printed version, you will need to pay a reasonable production charge reflecting printing and other costs. 6. We are not able to offer an opinion either verbal or written on the content of these reports and this must be obtained from your legal representative. 7. Whilst we take care in preparing these reports, a buyer should ensure that his/her legal representative confirms as soon as possible all matters relating to title including the extent and boundaries of the property and other important matters before exchange of contracts.