



**Church Street
Milton Keynes, MK12 5JU
£355,000**

Nestled in a tranquil setting on Church Street in Wolverton, Milton Keynes, this charming three-bedroom terraced house offers a delightful blend of comfort and convenience. With vacant possession, this property is ready for you to make it your own.

Upon entering, you will find a well-proportioned reception room that provides a welcoming space for relaxation and entertaining. The house boasts three spacious bedrooms, including a master suite complete with an en-suite bathroom, ensuring privacy and comfort for the occupants. The additional two bedrooms are versatile and can be adapted to suit your needs, whether as guest rooms, a home office, or children's bedrooms.

The property features two bathrooms, which is a significant advantage for family living or hosting guests. The gas central heating ensures a warm and inviting atmosphere throughout the home, while the double glazing enhances energy efficiency and reduces noise, creating a peaceful retreat.

Situated close to Wolverton town square and the high street, you will enjoy easy access to a variety of local amenities, including shops, cafes, and parks. This location is perfect for those who appreciate a community feel while still being within reach of the vibrant city life of Milton Keynes.

Do not miss the chance to view this lovely property.

Entrance

WC

Lounge

11'9" x 15'3" (3.60m x 4.67m)



Kitchen/ Diner

15'3" x 11'4" (4.65m x 3.47m)



Landing

Main Bedroom

10'3" x 9'7" (3.14m x 2.94m)



En Suite

4'7" x 8'6" (1.42m x 2.60m)



Bedroom 2

8'4" x 10'4" (2.55 x 3.16m)



Bedroom 3

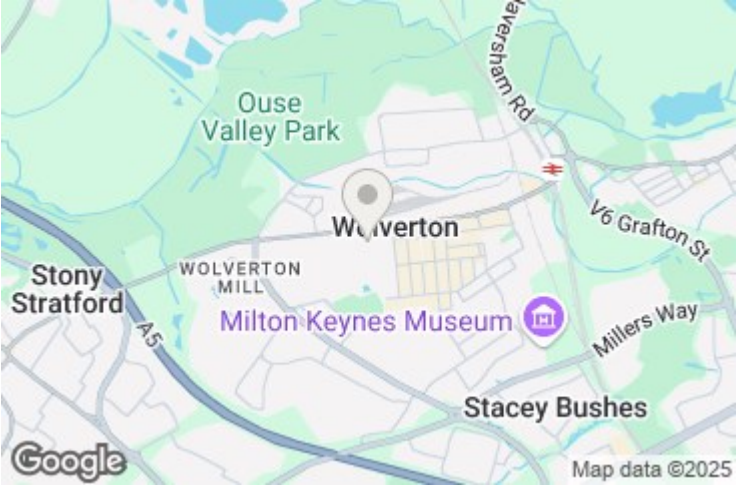
6'7" x 6'9" (2.02m x 2.06m)



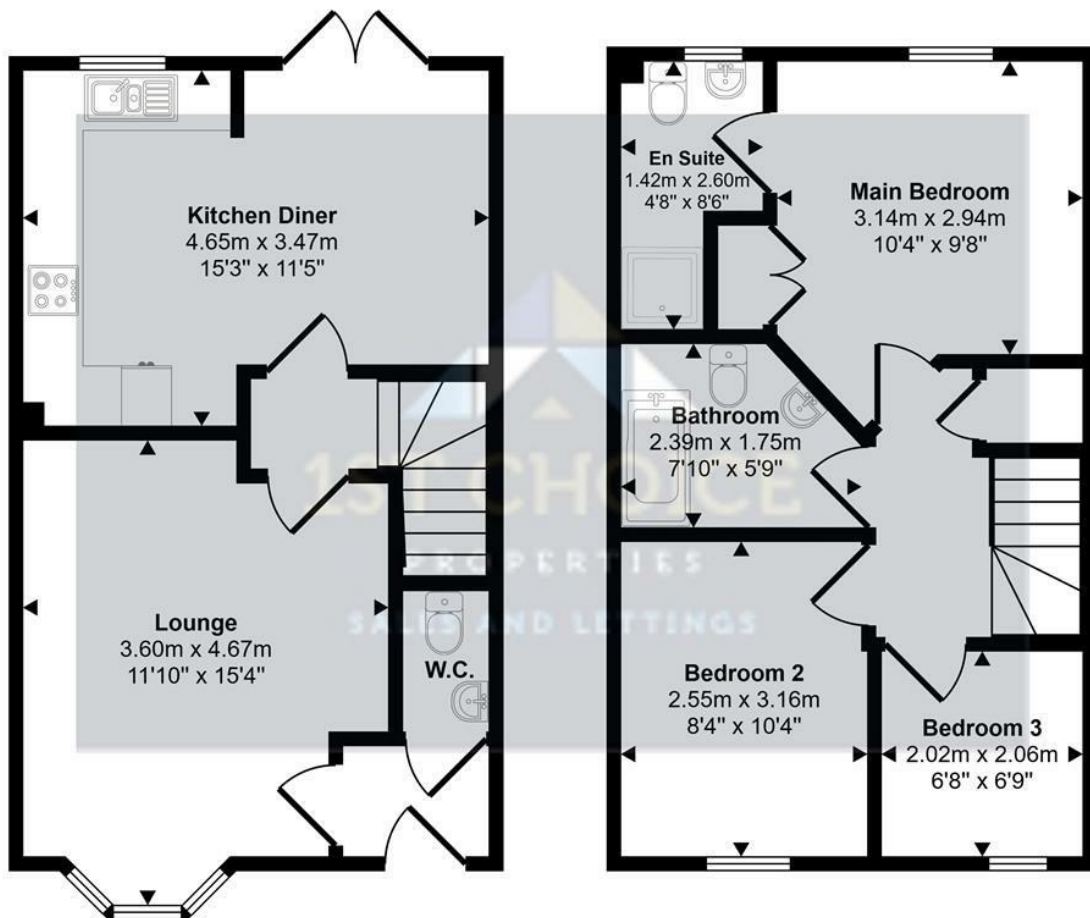
Bathroom



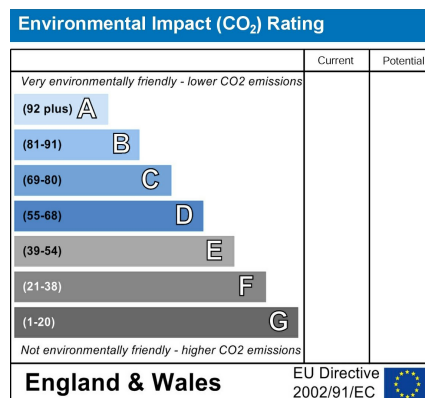
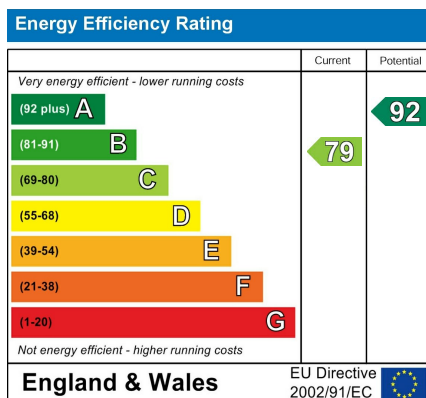
Rear Garden



Approx Gross Internal Area
74 sq m / 800 sq ft



This floorplan is only for illustrative purposes and is not to scale. Measurements of rooms, doors, windows, and any items are approximate and no responsibility is taken for any error, omission or mis-statement. Icons of items such as bathroom suites are representations only and may not look like the real items. Made with Made Snappy 360.



www.1stchoice-properties.co.uk