

Norbek
Two Mile Ash, Buckinghamshire MK8 8AT
£795

1st Choice Properties are pleased to offer this studio/ one-bedroom apartment which has been refurbished within the past few years with new flooring, kitchen, bathroom and been redecorated throughout. The property benefits from Upvc double glazing, electric heating, this apartment would ideally single person . We strongly advise an early inspection to avoid disappointment.

Entrance

Communal Staircase, Entrance door leading to:

Open Plan Living (Lounge/ Bedroom)

15'3" x 10'9" (4.66m x 3.28m)

UPVC double glazed window to side aspect, electric panel radiator, fitted carpet with two recessed spotlights, open plan to:

Kitchen

6'0" x 8'10" (1.82m x 2.70m)

Fitted with a matching range of base and eye level units with worktop space over, stainless steel sink unit with single drainer and mixer tap with ceramic tiled surround, washing machine, four ring electric hob with extractor hood over, uPVC double glazed window to side aspect, cupboard, vinyl flooring, door to:

Dressing Area

5'0" x 8'10" (1.52m x 2.70m)

Open plan to:

Shower Room

Fitted with three piece suite with recessed tiled double shower enclosure with fitted electric power shower and glass screen, vanity wash hand basin in vanity unit with cupboards under, low-level WC, electric fan heater, tiled surround, uPVC double glazed window to side aspect.

Lease Details

Date Of Lease : 25th May 1982

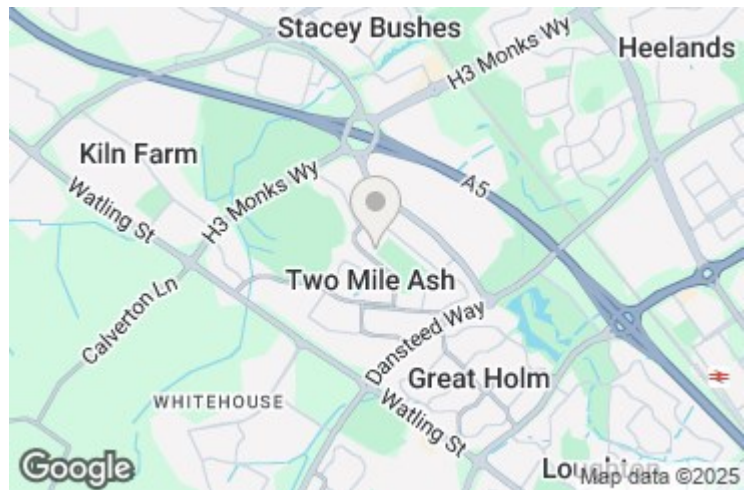
Length Of Lease: 120 years

Ground Rent: £37.80 every 6 months

Service: No Service Charge

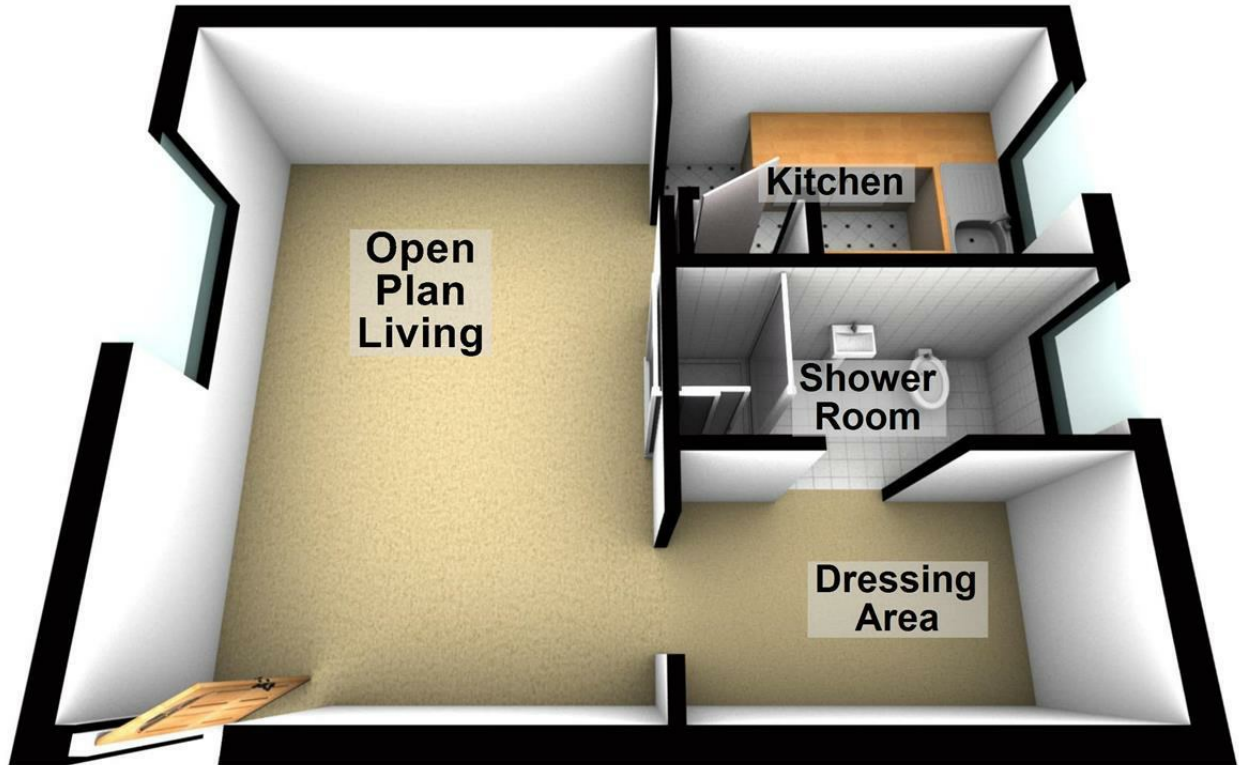
Communal Electric £4.00 every 3 months

Contribution To Buildings Insurance £298.38 for current year

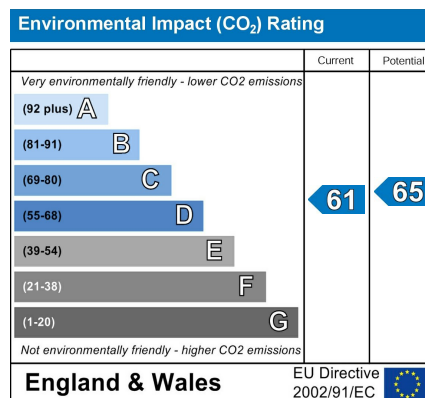
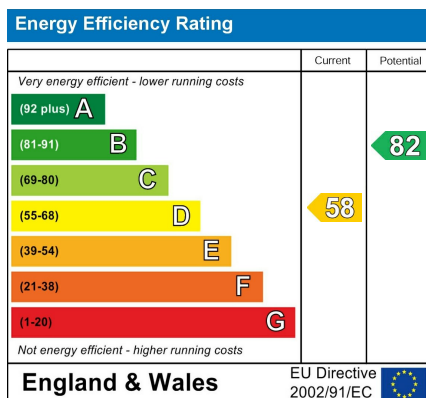


Ground Floor

Approx. 28.3 sq. metres (304.9 sq. feet)



Total area: approx. 28.3 sq. metres (304.9 sq. feet)



www.1stchoice-properties.co.uk