



**Mill Road
Bletchley, MK2 2LB
£400,000**

Nestled on the charming Mill Road in Bletchley, Milton Keynes, this delightful mature detached bungalow offers a perfect blend of comfort and style. With two spacious double bedrooms, this property is ideal for those seeking a tranquil living space. The bungalow features a well-appointed bathroom and two inviting reception rooms, providing ample space for relaxation and entertaining.

The heart of this home is undoubtedly its mature garden, which not only enhances the property's appeal but also offers a serene outdoor retreat. For those warm summer days, the swimming pool adds a touch of luxury, making it an excellent spot for family gatherings or simply unwinding in the sun.

The bungalow is equipped with double glazing, ensuring a warm and energy-efficient environment throughout the year. Additionally, the gas to radiator heating system provides a cosy atmosphere during the cooler months.

This property is perfect for individuals or families looking for a peaceful residence in a well-established area. With its combination of practical living spaces and delightful outdoor features, this bungalow is a rare find in Bletchley. Don't miss the opportunity to make this charming home your own.

Entrance

Hallway

Living Room

12'5" x 17'1" (3.80m x 5.21m)



Kitchen



Dining Room

9'11" x 10'3" (3.04m x 3.14m)



Bathroom



Bedroom 1

12'0" x 10'9" (3.68 x 3.28m)



En-Suite

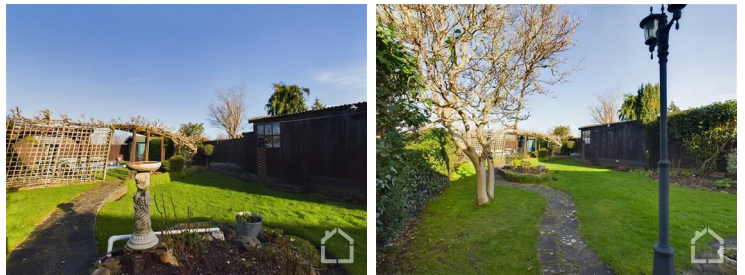


Bedroom 2

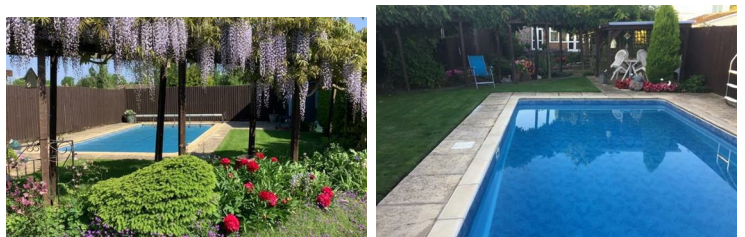
12'1" x 10'9" (3.70m x 3.28m)



Rear Garden

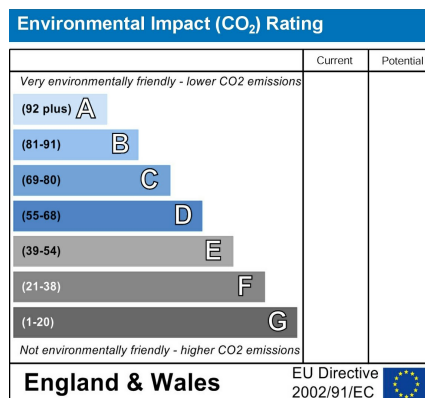
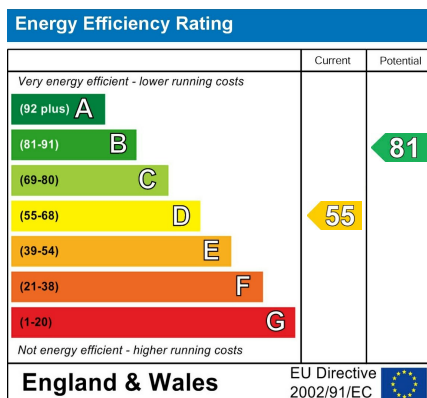
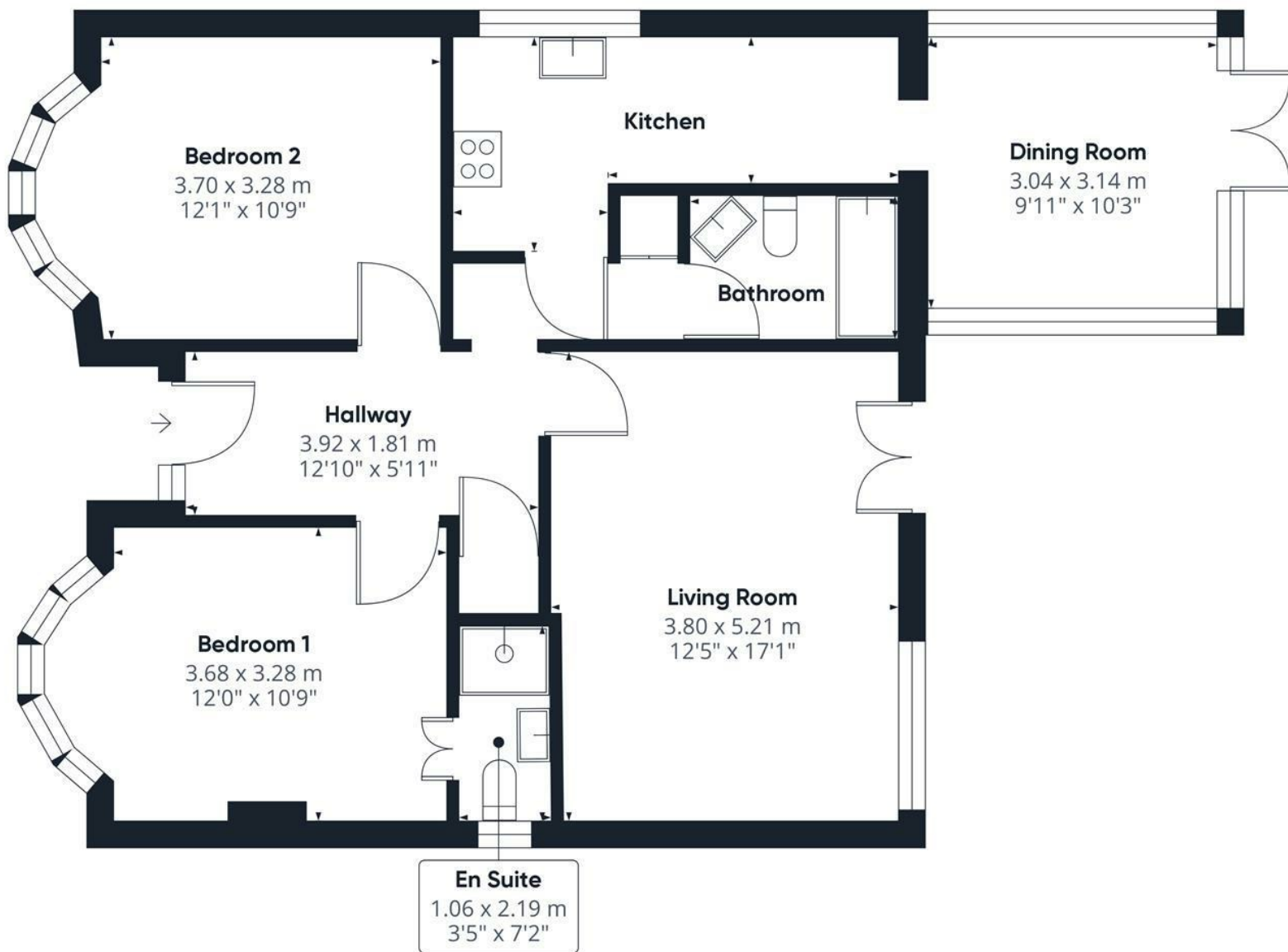


Pool



Front Garden





www.1stchoice-properties.co.uk