



**Gardiner Court
Blue Bridge, MK13 0LR
£315,000**

Nestled in the charming residential development of Blue Bridge, Milton Keynes, this recently refurbished two-bedroom detached house offers a delightful blend of modern living and comfort. The property boasts a spacious open-plan lounge, perfect for both relaxation and entertaining guests. With double glazing throughout, you can enjoy a warm and inviting atmosphere, complemented by efficient gas central heating. The house features two well-proportioned bedrooms, providing ample space for a small family or professionals seeking a peaceful retreat. The bathroom is conveniently located, ensuring ease of access for all residents. Additionally, the property includes a garage, offering valuable storage space or the potential for a workshop.

With vacant possession, this home is ready for you to move in and make it your own. The location in Blue Bridge is ideal, providing a sense of community while being close to local amenities and transport links. This property presents an excellent opportunity for those looking to settle in a desirable area of Milton Keynes. Don't miss the chance to view this lovely home and experience the lifestyle it has to offer.

Entrance

Part glazed entrance door, carriage leading to entrance ha;;;

Entrance Hall

Door leading garage, open plan to Kitchen breakfast room.

Kitchen/ Diner

12'8" x 14'3" (3.88m x 4.36m)



A range of base and wall mounted units providing storage space and work surfaces , providing storage space and work space . Single drainer, single bowl stainless steel sink unit, mono block mixer tap, ceramic tiled surround concealed wall mounted gas boiler serving domestic and general hot water . Fitted fan assisted oven, five ring gas hob, over head extractor hood, space for fridge, laminate flooring , double glazed window to front aspect , Open plan to Lounge :

Lounge

12'6" x 9'10" (3.82m x 3.02m)



Laminate flooring, stairs rising to first floor accommodation, two radiators feature fire place with electric fire, sliding patio doors to garden .Pine vaulted ceiling

First Floor Landing

Fitted carpet , access to loft space .Doors too

Main Bedroom

8'7" x 11'3" (2.64m x 3.45m)



Fitted carpet, radiator, cupboard, sliding mirror fronted wardrobes providing hanging clothes rail and shelving, double glazed window to front aspect.

Bedroom 2

8'0" x 11'3" (2.44m x 3.45m)



Fitted carpet, radiator, cupboard, sliding mirror fronted wardrobes providing hanging clothes rail and shelving, double glazed window to front aspect.

Bathroom



Fitted bathroom suite, comprising of panelled bath, with power shower over, glass show screen, hand wash basin mounted in vanity unit, low level wc, , extensive ceramic tiling, radiator, tiled floor, double glazed window to rear.

Rear Garden



Laid to lawn, laid patio area, retaining flower and shrub borders, gated access , enclosed by panel fencing.

Front Garden

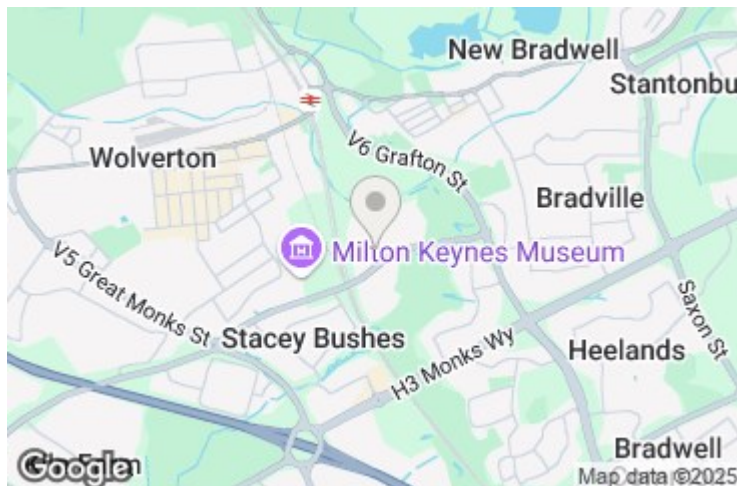
Lawned area with mature tree, driveway leading to:

Garage

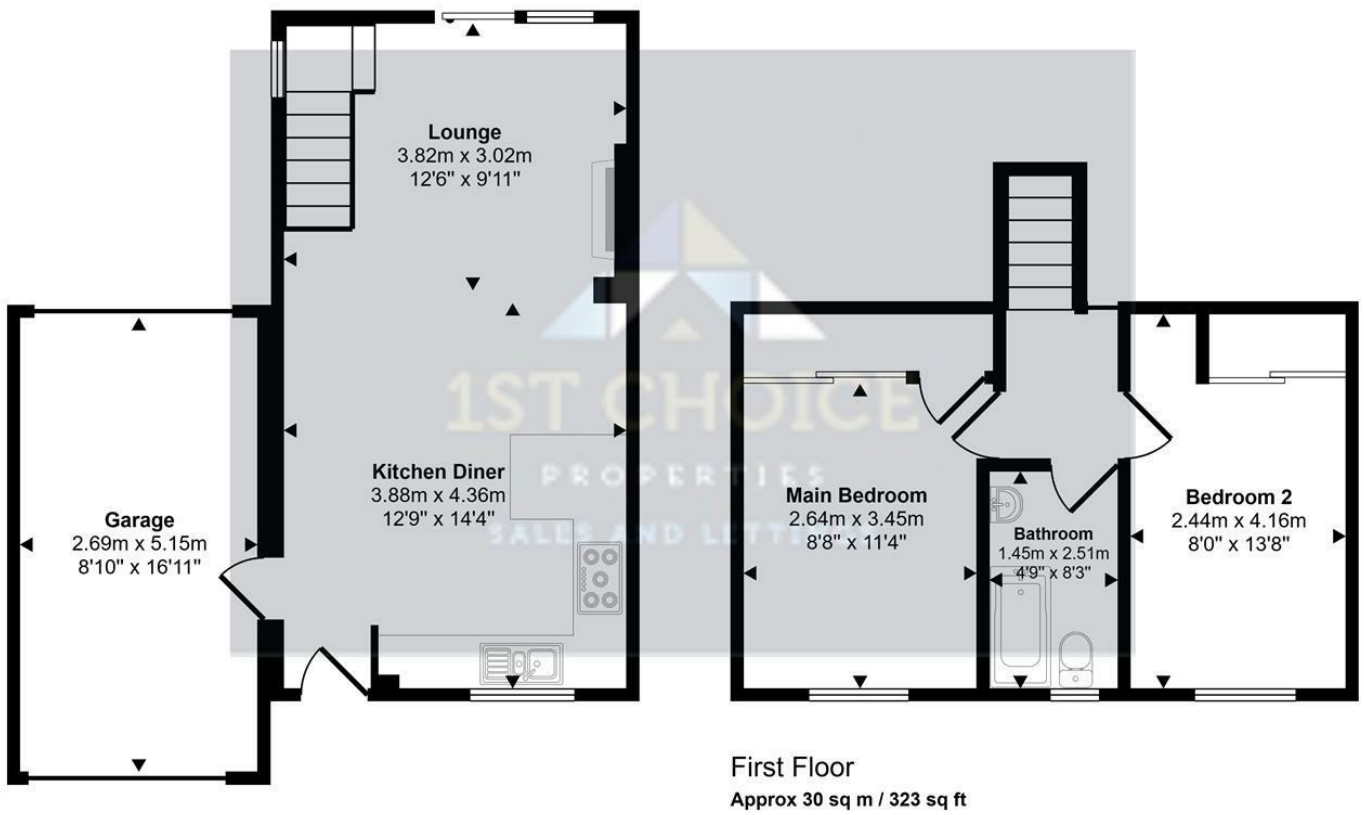
Up and over door , power and light up and over door to garden .

NB Note

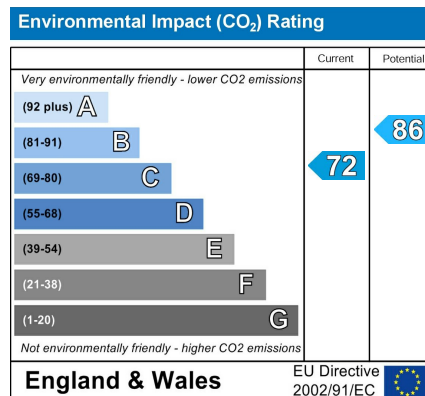
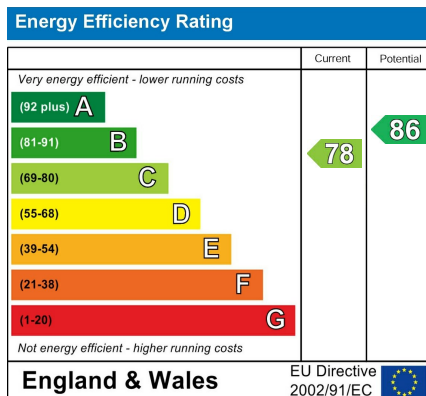
Equal contributions to Roman Park Management Ltd £70.00 per annum for 2025



Approx Gross Internal Area
74 sq m / 798 sq ft



This floorplan is only for illustrative purposes and is not to scale. Measurements of rooms, doors, windows, and any items are approximate and no responsibility is taken for any error, omission or mis-statement. Icons of items such as bathroom suites are representations only and may not look like the real items. Made with Made Snappy 360.



www.1stchoice-properties.co.uk