



Carter Grove
Wolverton, Milton Keynes MK12 5QU
£375,000

1st Choice Properties are please to offer for sale this 3 bedroom three storey town house which is offered in excellent condition throughout. The property benefits from gas to radiator heating, double glazing, fitted kitchen and versatile living accommodation. The property comprises entrance hall, cloakroom, lounge/diner, kitchen, master bedroom with ensuite shower room two further bedrooms, bathroom, garden, garage and driveway for several vehicles. To avoid disappointment we strongly advise an early inspection.

Entrance

Part covered storm porch, carriage light, part glazed door to

Entrance Hall

Ceramic tile floor, single panel radiator , stairs rising to second floor, doors to:

Cloakroom

White suite comprising pedestal hand wash basin, low level wc, ceramic tile floor and surround , single panel radiator , double glazed window to front aspect

Lounge/Diner

14'11" x 14'7" (4.57m x 4.46m)



Fitted carpet, two single panel radiators , understairs cupboard, two full height double glazed windows with double glazed French doors to garden. double glazed window to side aspect.

Kitchen

8'2" 10'8" (2.51m 3.27m)



A range of base and wall mounted units providing storage space and work surface, ceramic tile surround, single drainer, single bowl stainless steel sink unit, mono block mixer tap, single panel radiator, space for fridge freezer, four ring gas hob, fan assisted electric oven, over head extractor hood Plumbing for automatic washing machine. integrated dishwasher, ceramic tiled flooring. double glazed window to front aspect.

First Floor Landing

Fitted carpet, single panel radiator , stairs to second floor, airing cupboard, double glazed window to rear aspect.

Bedroom 2

8'7" x 11'6" (2.63m x 3.51m)



Fitted carpet, single panel , double glazed window to front aspect

Bedroom 3

8'3" x 10'7" (2.52m x 3.25m)

Fitted carpet, single panel radiator, a range of built-in wardrobes providing hanging clothes rail and shelving. double glazed window to rear aspect

Bathroom



Fitted white 4 piece suite comprising of panel bath, mixer tap and ceramic tile surround, fully tiled shower enclosure with power shower and folding glass screen, low level wc , pedestal hand wash basin , mixer tap and ceramic tile surround and low level wc , ceramic tiled flooring , single panel radiator and double glazed window to front aspect.

Second Floor

Open plan into main bedroom

Main Bedroom

11'4" x 18'11" (3.46m x 5.77m)

Fitted carpet, built-in wardrobes, two single panel radiators, walk-in double glazed box bay window to front two velux windows to rear aspect

En-suite Shower



Fitted white three piece suite comprising recessed tiled double shower cubicle with power shower, low level wc pedestal hand wash basin. ceramic tiled surround. ceramic tile flooring, extractor fan .

Front Garden

Paved area

Rear Garden



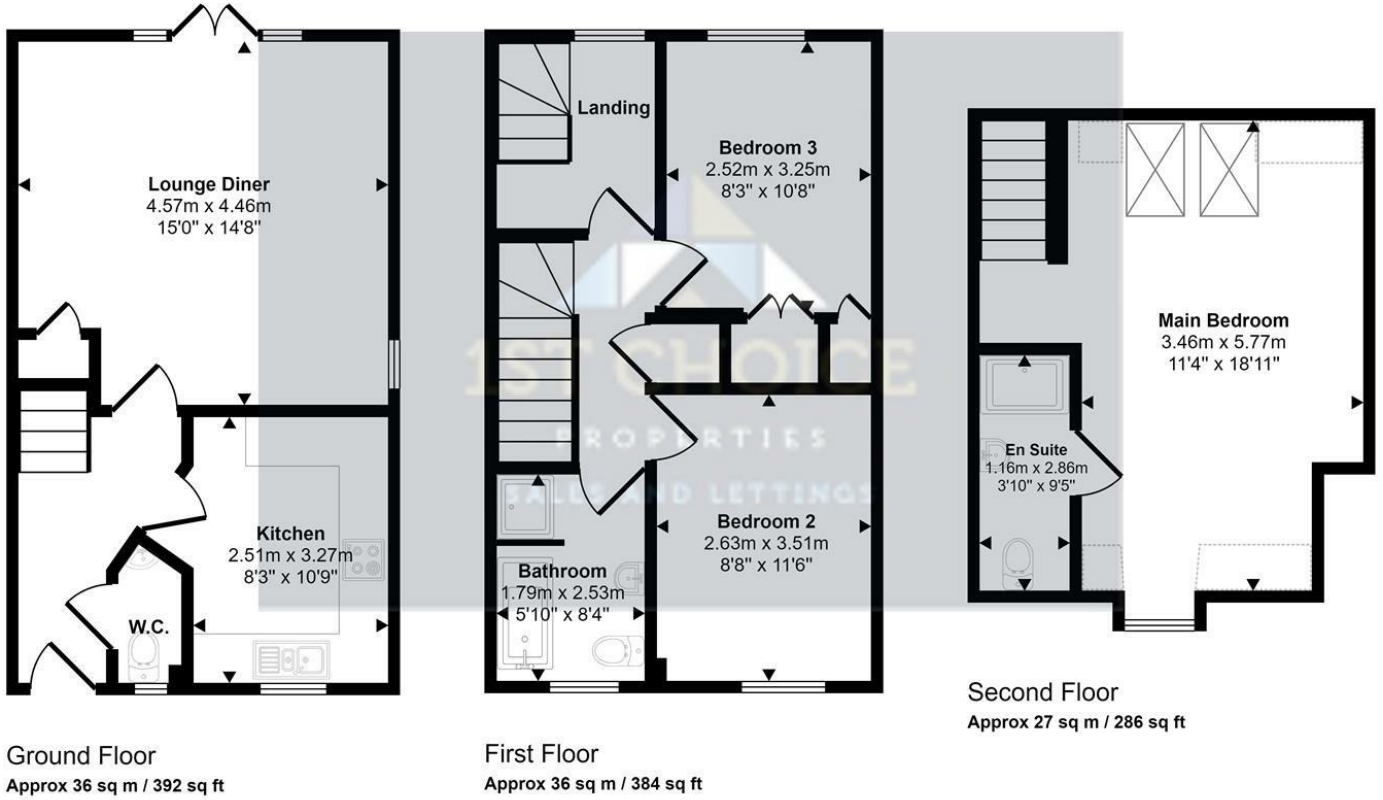
Laid to lawn with retaining flower and shrub borders and beds, enclosed by brick wall and fencing, laid patio area .gated access on side of property.

Garage

Driveway for several vehicles leading to detached garage with up and over door, power and light. storage in eaves space.

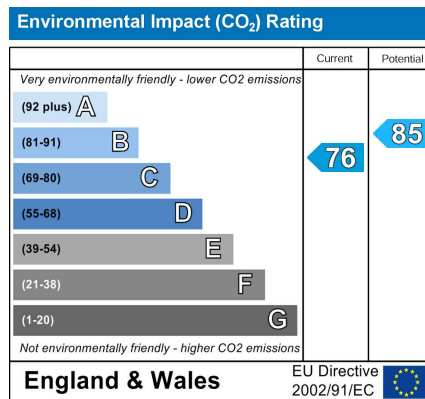
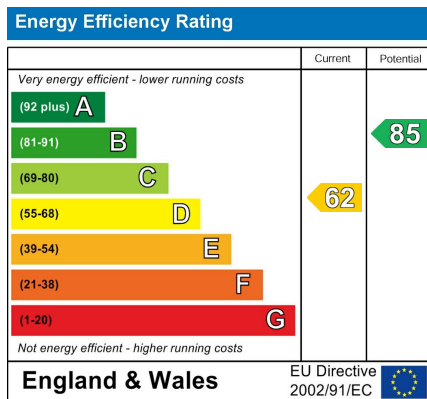


Approx Gross Internal Area
99 sq m / 1062 sq ft



☐ Denotes head height below 1.5m

This floorplan is only for illustrative purposes and is not to scale. Measurements of rooms, doors, windows, and any items are approximate and no responsibility is taken for any error, omission or mis-statement. Icons of items such as bathroom suites are representations only and may not look like the real items. Made with Made Snappy 360.



www.1stchoice-properties.co.uk