



COLE'S  
ESTATE AGENTS



COLE'S  
ESTATE AGENTS

Hill, Hartfield

£395,000



## Description

An utterly charming two bedroom cottage situated on the fringes of this highly sought after village. Accommodation comprises a sitting room with feature fireplace, two double bedrooms and a family bathroom. Further benefits include pretty front and rear gardens and no onward chain.

EPC Rating: C

## Key Features

- Two Bedroom Cottage
- Sought After Village
- Period Features
- Cottage Gardens
- Parking
- No Onward Chain

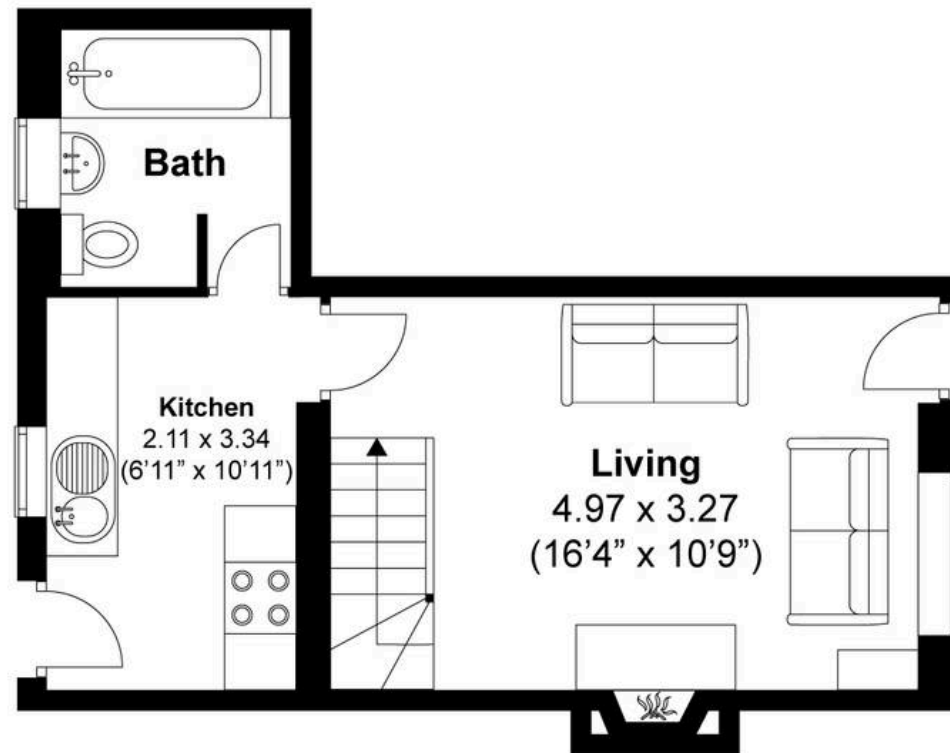
## Location

Hartfield is famous for being the home of A.A. Milne, author of the Winnie the Pooh books and location of "Poohsticks Bridge". Viola Cottage is situated near to the centre of the village, which is surrounded by beautiful Sussex countryside and an abundance of wildlife. The village itself has shops catering for everyday needs including a village store, butchers, doctors surgery, playground, playing fields, tennis club and public houses, all of which are within an easy walk. Forest Row is approximately 3 miles away and offers a wider range of shopping including two mini supermarkets and a number of independent shops, restaurants and public houses. Mainline rail: Commuter services to London Bridge, Cannon Street, Charing Cross and London Victoria are available from Cowden, Dormansland and East Grinstead stations.

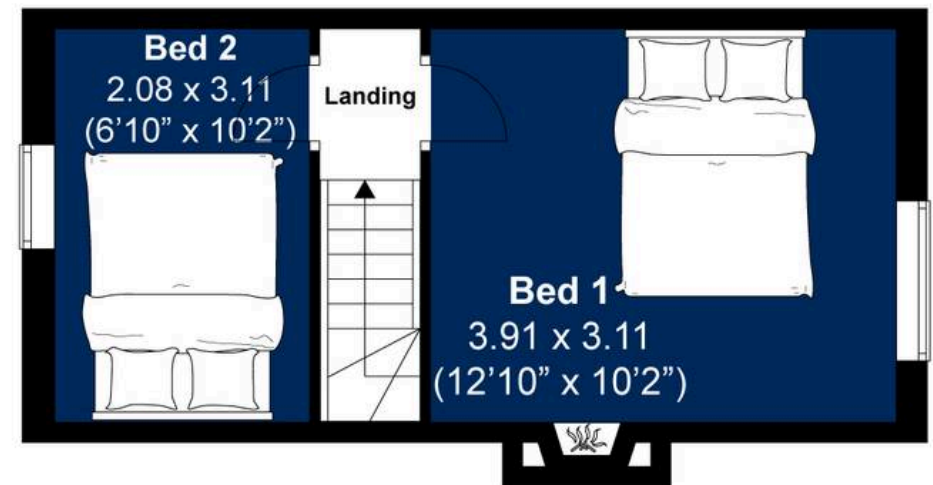


# Newtons Hill, Hartfield

Approximately 50 sqm (537.8 sqft)



**GROUND FLOOR**



**FIRST FLOOR**



## Disclaimer:

The measurements are approximate and are for illustration purposes only.  
The dimensions are measured internally and in metres and feet. We do not take any responsibility for errors and/or omissions.  
If you require further verification please discuss with the buyer/owner of the property.



