



COLE'S  
ESTATE AGENTS

Frankel Cottage Newtons Hill, Hartfield

Guide Price £550,000



# Newtons Hill, Hartfield, TN7

## Description

A stunning double fronted period house in this sought after village location. Accommodation comprises three bedrooms, a sitting room, kitchen and bathroom. Further benefits include a useful loft room, substantial gardens and off street parking. No onward chain.  
EPC Rating: D

## Key Features

- Period House
- Three Bedrooms
- Sitting Room
- Wonderful Gardens
- Off Street Parking
- No Onward Chain

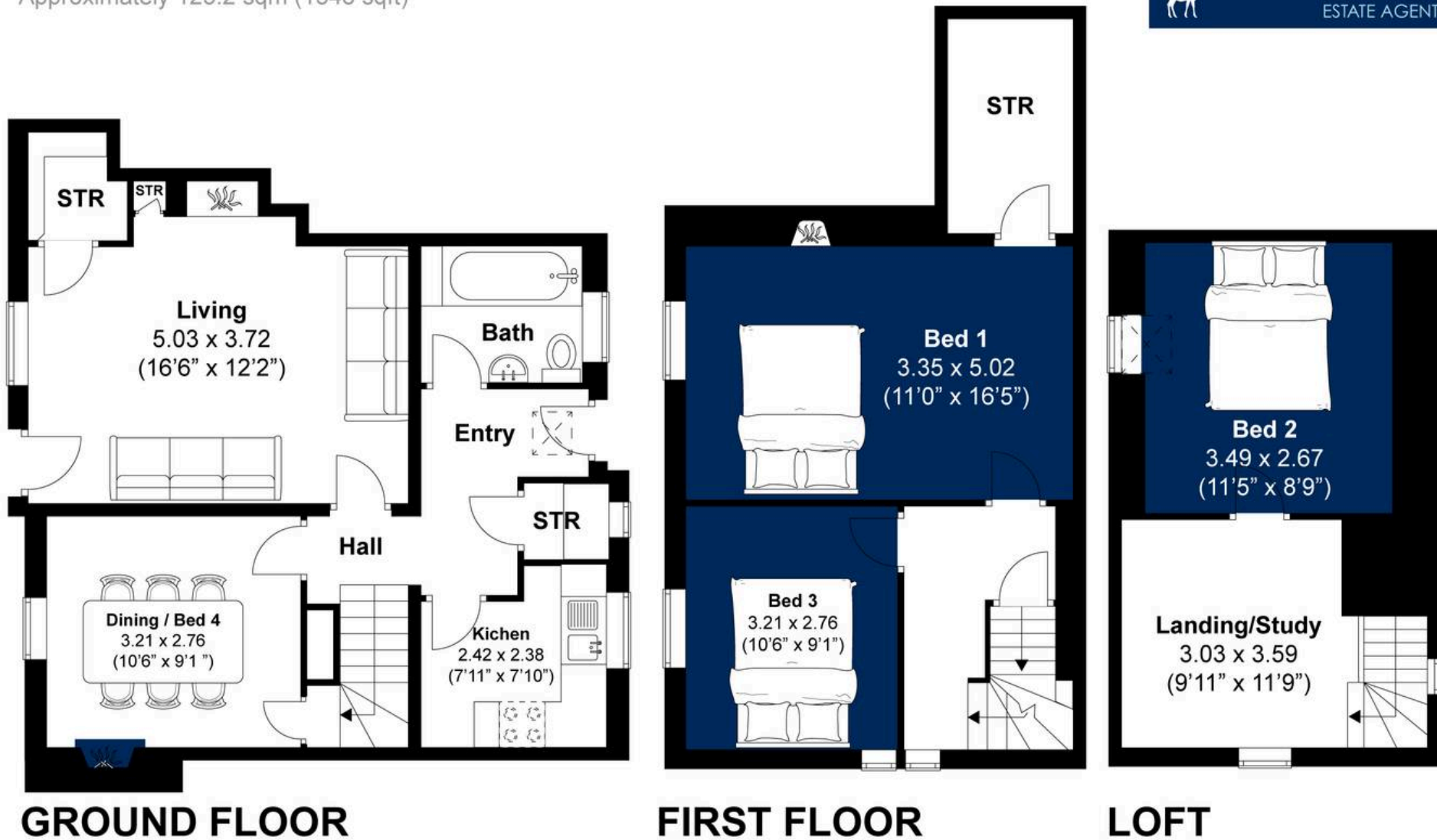
## Location

Hartfield is famous for being the home of A.A. Milne, author of the Winnie the Pooh books and location of "Poohsticks Bridge". Victoria Cottage is situated near to the centre of the village, which is surrounded by beautiful Sussex countryside and an abundance of wildlife. The village itself has shops catering for everyday needs including a village store, butchers, doctors surgery, playground, playing fields, tennis club and public houses, all of which are within an easy walk. Forest Row is approximately 3 miles away and offers a wider range of shopping including two mini supermarkets and a number of independent shops, restaurants and public houses. Mainline rail: Commuter services to London Bridge, Cannon Street, Charing Cross and London Victoria are available from Cowden, Dormansland and East Grinstead stations.



# Newtons Hill, Hartfield

Approximately 125.2 sqm (1348 sqft)



## Disclaimer:

The measurements are approximate and are for illustration purposes only.  
The dimensions are measured internally and in metres and feet. We do not take any responsibility for errors and/or omissions.  
If you require further verification please discuss with the buyer/owner of the property.









## Cole's Estate Agents

56 High Street, East Grinstead - RH19 3DE

01342 324616 • [sales@colesestateagents.com](mailto:sales@colesestateagents.com) • [www.colesestateagents.com/](http://www.colesestateagents.com/)



**COLE'S**  
ESTATE AGENTS