



The Maze, Felcot Road, Furnace Wood

East Grinstead

An exceptional five bedroom detached family home situated on this highly sought after private road in Furnace Wood. Accommodation comprises three reception rooms, a stunning kitchen/breakfast room including Quooker tap providing boiling and filtered water, NEFF dishwasher/ coffee machine/ combi oven/ induction hob and warming drawers, a conservatory, family bathroom and an en-suite bathroom with hydro-therapy bath and underfloor heating. Further benefits include a study, utility room, cloakroom, double garage with electric charging point and cat 5 cabling to the ground floor accommodation. Outside, one of the true highlights of this property are the surrounding gardens and sun terrace. An abundance of mature trees and hedging offer privacy and seclusion, and a sweeping driveway provides off street parking for many vehicles.

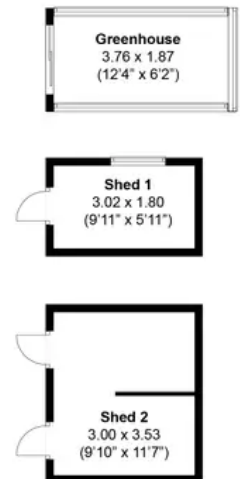
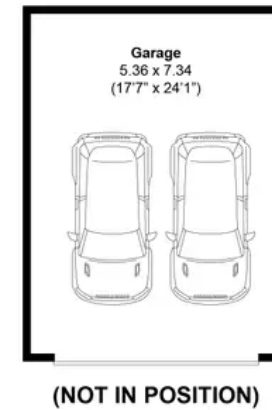
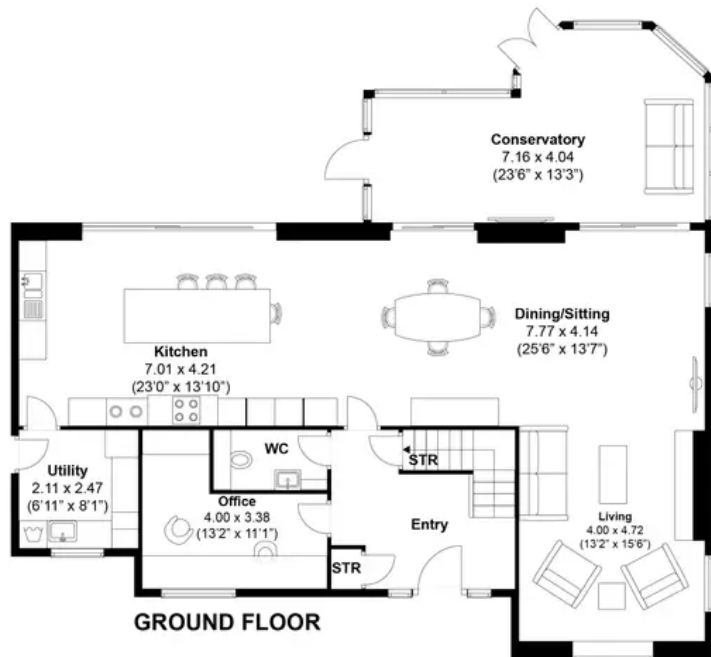
- Stunning Detached Family Home
- Five Bedrooms
- Air-conditioning To Main Bedroom
- Three Reception Rooms
- Family Bathroom
- En-suite Bathroom With Hydro-Therapy Bath And Underfloor Heating
- Beautiful Kitchen/Dining Room
- Conservatory
- Utility Room & Cloakroom
- Study
- Double Garage
- Driveway Parking
- Fabulous Formal Gardens & Sun Terrace
- Private Road

Furnace Wood is situated on the western outskirts of East Grinstead. There are many local amenities including pubs, convenience stores, primary schools and a range of shops and services. Mainline railway stations at East Grinstead, Three Bridges and Gatwick provide services to London Bridge/Victoria. The M23 provides good access to London, Brighton, Gatwick and the wider motorway network. Open countryside is within easy reach including the nearby Ashdown Forest, the largest public accessed green space in the south east. The area is renowned for the standard of its schooling in both private and state sectors, including Brambletye, Ardingly College and Worth Schools.



# Felcot Road, Felbridge

Approximately 237.26 sqm (2553.88 sqft)



**Disclaimer:**  
The measurements are approximate and are for illustration purposes only. The dimensions are measured internally and in metres and feet. We do not take any responsibility for errors and/or omissions. If you require further verification please discuss with the buyer/owner of the property.

