



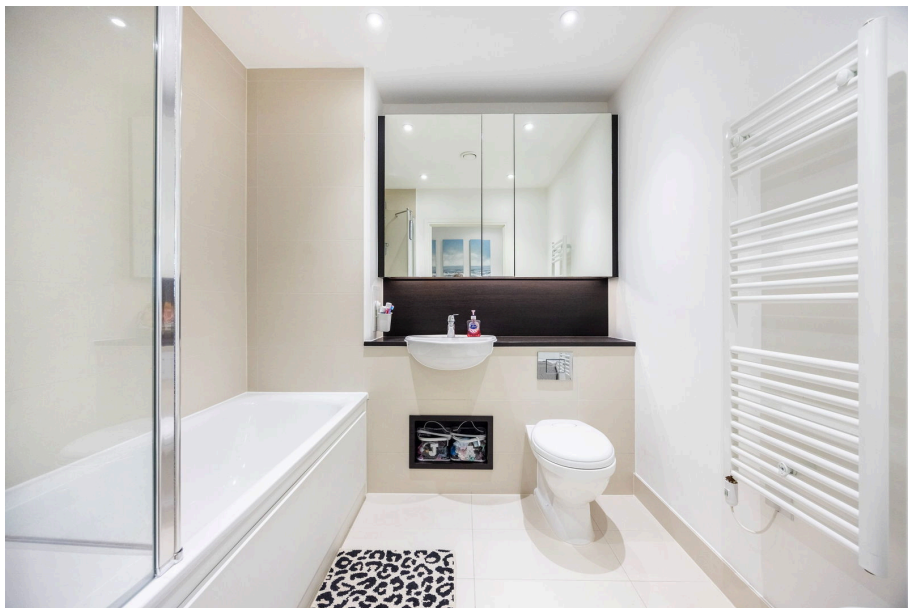
Kingfisher Heights, 2, Bramwell Way

£595,000

🛏️ 0 🚿 0 🚗 0



- Three Bedroom Apartment
- En-suite To Master Bedroom
- 999 Sq.ft



An extremely well presented three bedroom, two bathroom apartment arranged in Kingfisher Heights, part of the very popular Waterside Park development, in Royal Docks, E16.

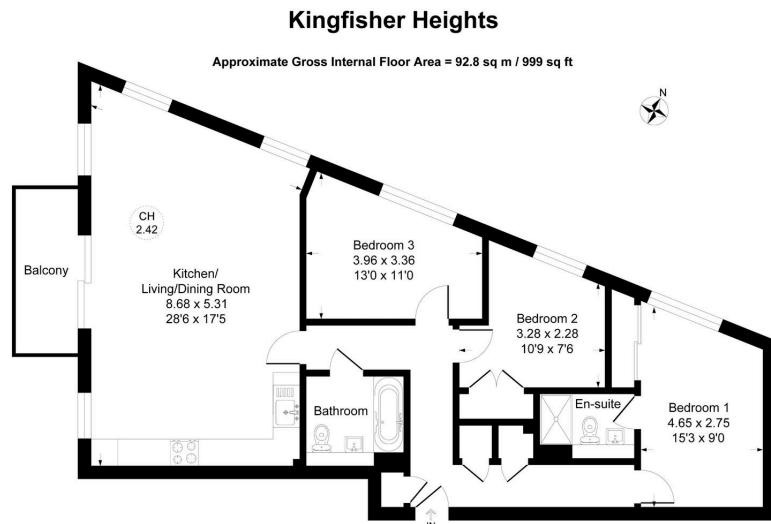
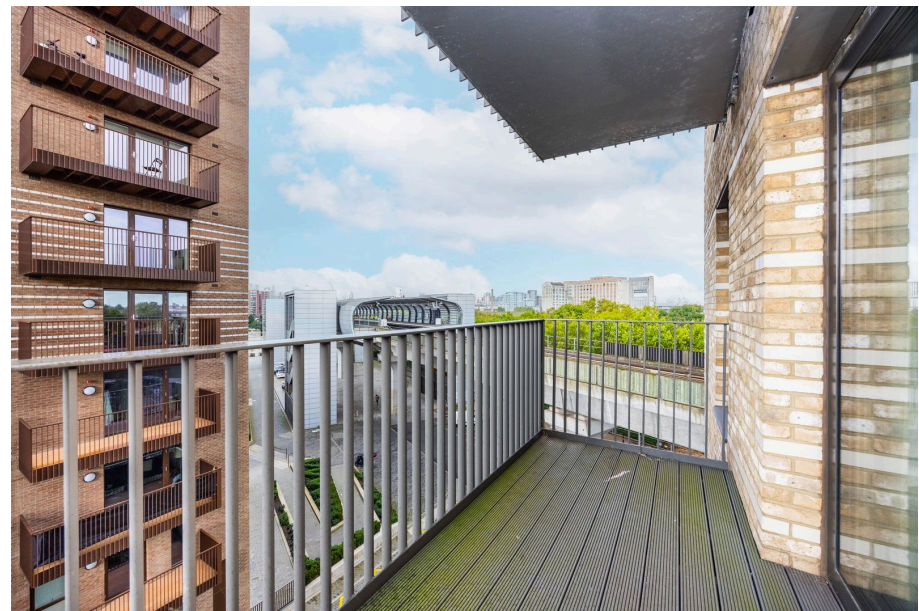


Illustration for identification purposes only, measurements are approximate, not to scale.

Energy Efficiency Rating		
	Current	Potential
Very energy efficient - lower running costs		
(92 plus) A		
(81-91) B	83	83
(69-80) C		
(55-68) D		
(39-54) E		
(21-38) F		
(1-20) G		
Not energy efficient - higher running costs		
England & Wales	EU Directive 2002/91/EC	

UK Offices | Canary Wharf - E14 | Nine Elms - SE1 | Royal Docks - E16 | Bow - E3 | Hayes, Middlesex - UB3 | Manchester - M2

International Offices | Dublin | Abu Dhabi | Hong Kong | Singapore

