

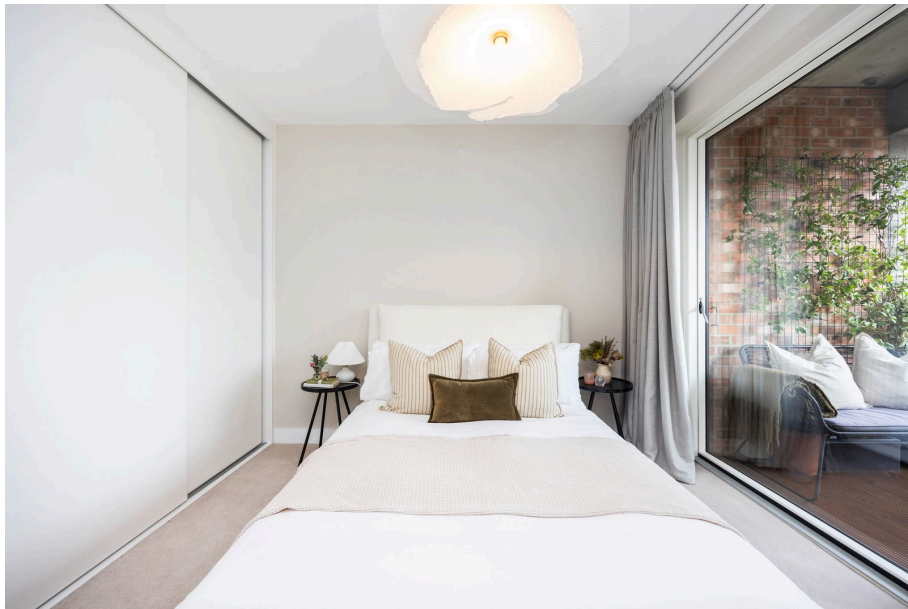


Torchbearer Court, 16, Wyke Road

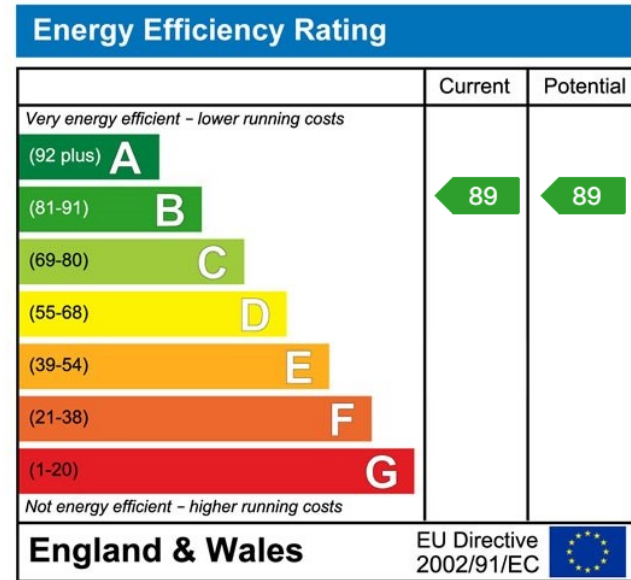
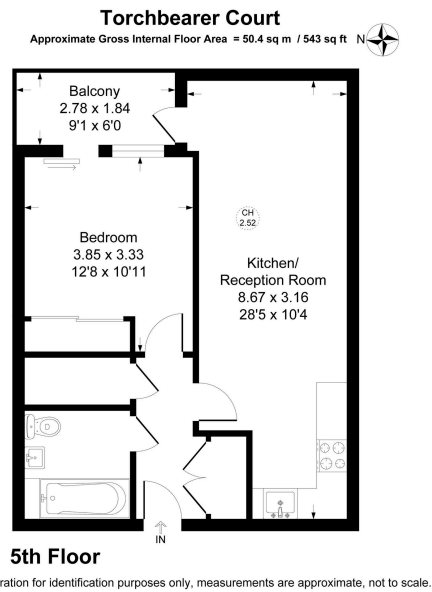
£475,000

🛏️ 1 🚿 1 🚪 1





An immensely stylish one bedroom apartment forming part of an impressive development situated in the vibrant Fish Island area close to the excellent local amenities and right next to the canal.



UK Offices | Canary Wharf - E14 | Nine Elms - SE1 | Royal Docks - E16 | Bow - E3 | Hayes, Middlesex - UB3 | Manchester - M2

International Offices | Dublin | Abu Dhabi | Hong Kong | Singapore

