



Omega Works, 4, Roach Road

£600,000

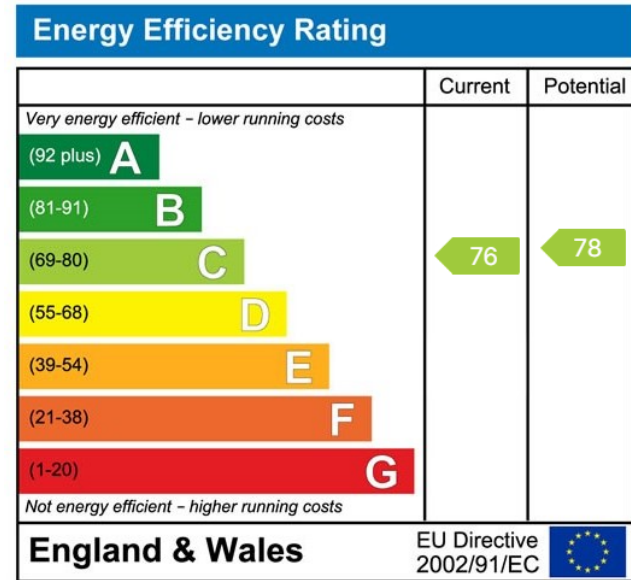
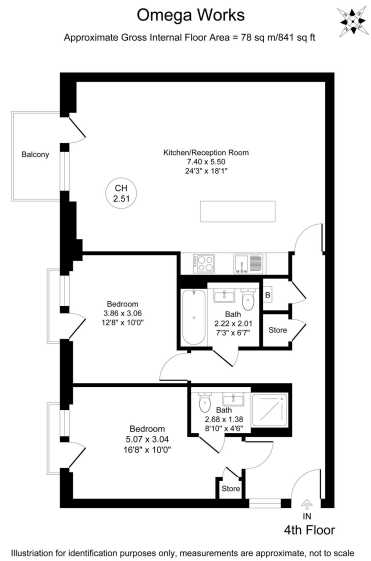
🛏️ 2 🚿 2 🚗 0



- Two Bedrooms
- Two Bathrooms
- Large Balcony
- Secure Gated Community
- 24 Hour Concierge
- Very Popular Location
- Close to The Canal
- Excellent Transport Links



Henry Wiltshire is proud to present this rare to the market two-bedroom, two-bathroom 4TH floor apartment with a private resident canal walkway situated in the heart of Fish Island.



UK Offices | Canary Wharf - E14 | Nine Elms - SE1 | Royal Docks - E16 | Bow - E3 | Hayes, Middlesex - UB3 | Manchester - M2

International Offices | Dublin | Abu Dhabi | Hong Kong | Singapore

