

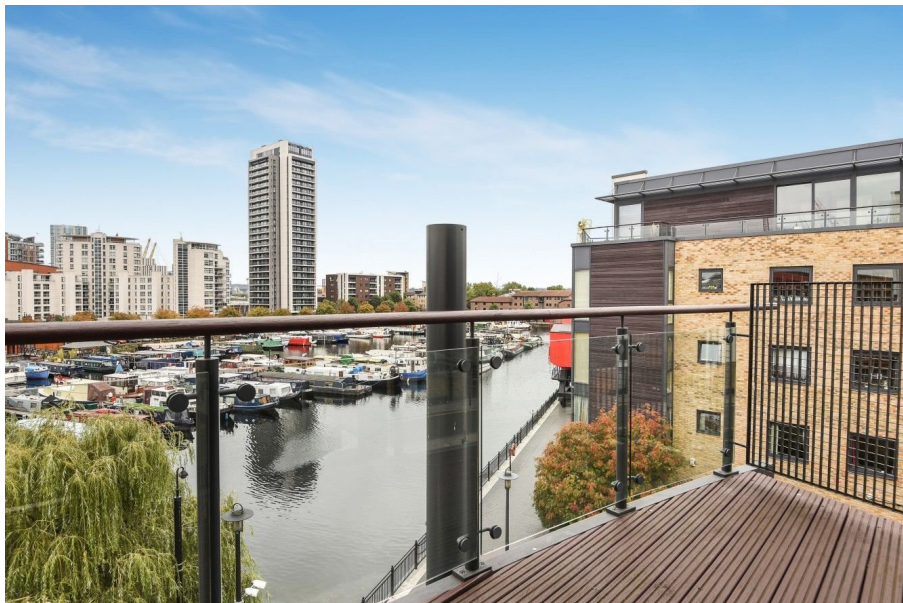




# Boardwalk Place, London, E14 5SH

£675,000

🛏️ 2 🚿 2 🛋️ 1

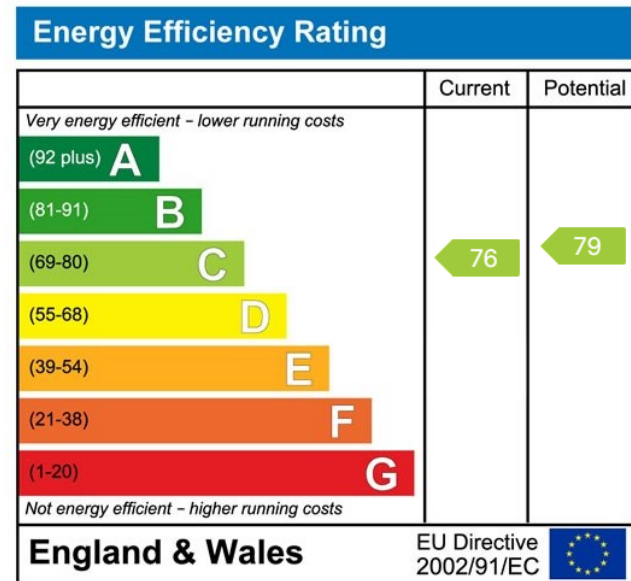
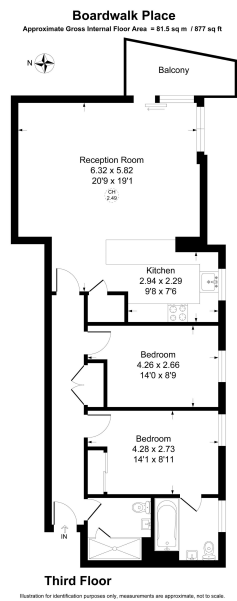


- Spacious & Modern Apartment
- Two Bedrooms
- Large Balcony
- En-Suite Shower
- Stunning Marina Views
- On the door step of Canary Wharf
- Two Bathrooms
- Good Sized Bedrooms
- Underground Parking Space
- Flooded With Natural Light





Spacious very well presented two bedroom, two bathroom apartment situated in Boardwalk Place next to Canary Wharf with amazing views across the Marina.



UK Offices | Canary Wharf - E14 | Nine Elms - SE1 | Royal Docks - E16 | Bow - E3 | Hayes, Middlesex - UB3 | Manchester - M2

International Offices | Dublin | Abu Dhabi | Hong Kong | Singapore

