

**139 Leven Road, London, E14 0XS**

£375,000

1 1 1



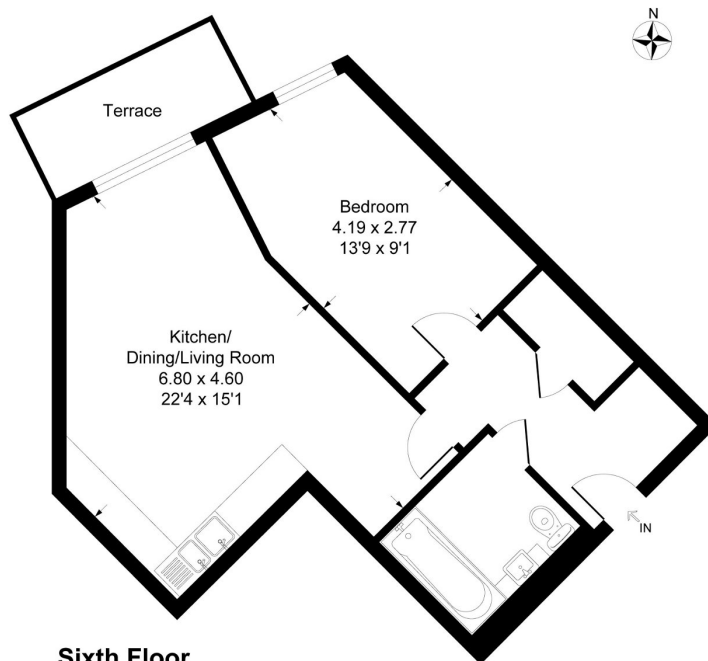
627 sq. ft. internal | One double bedroom | Sixth floor | High specification | Large private balcony | Langdon Park DLR easily accessible | Concierge service | Riverside Development | 999 year lease from 2014 | EWS1 Cladding Certificate Pass Secure Underground Parking Space

## Key Features

- One Bedroom 6th Floor Apartment
- 627 Sq. Ft
- Investment Opportunity & Great First Purchase
- Concierge Service
- Private Balcony
- Secure Underground Parking Space
- 999 Years Lease from 2015
- Service Charge £2,300.26 Ground Rent £300
- Fantastic Views of the River and London Stadium
- High Specification

## Cityview Point

Approximate Gross Internal Floor Area = 58.2 sq m / 627 sq ft



### Sixth Floor

Illustration for identification purposes only, measurements are approximate, not to scale.