


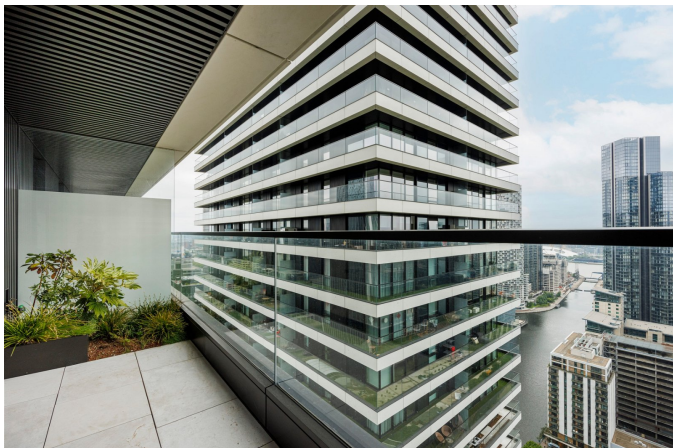


**HOBART BUILDING , 3808, 1 WARDS PLACE**

£560,000

 1  1  1



- Luxurious Studio Apartment
- Private Balcony With Garden Package
- Outstanding Facilities
- Huge Well Stocked Residents Gymnasium
- Sky Lounge & Observatory
- 38th Floor
- Very Long Lease
- 25m Partial Open Air Heated Swimming Pool
- 24 Hour Concierge
- Investment Opportunity

## Hobart Building

Approximate Gross Internal Floor Area = 36.7 sq m / 395 sq ft

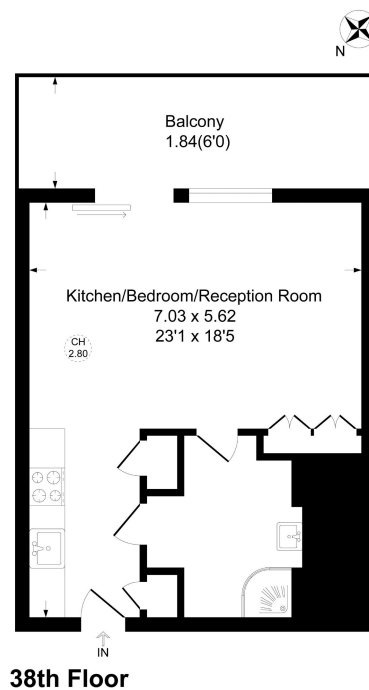


Illustration for identification purposes only, measurements are approximate, not to scale.

Arranged on the 38th floor of this luxury development in the heart of Canary Wharf is this immaculate Studio Apartment ready to move into.