
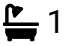

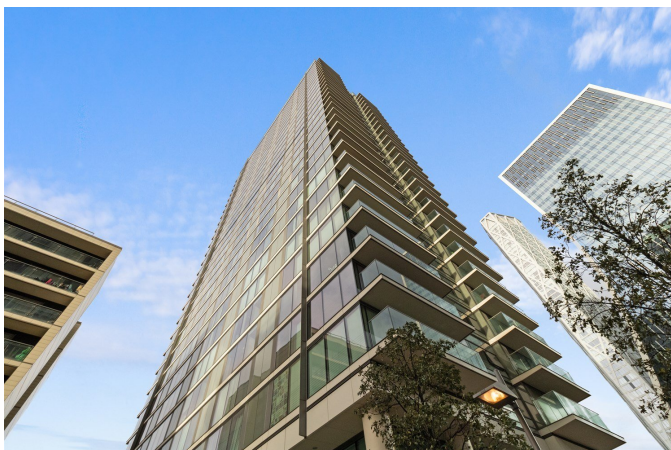


Marsh Wall, Canary Wharf, London, E14 9AF

Guide Price £520,000

 1  1  1

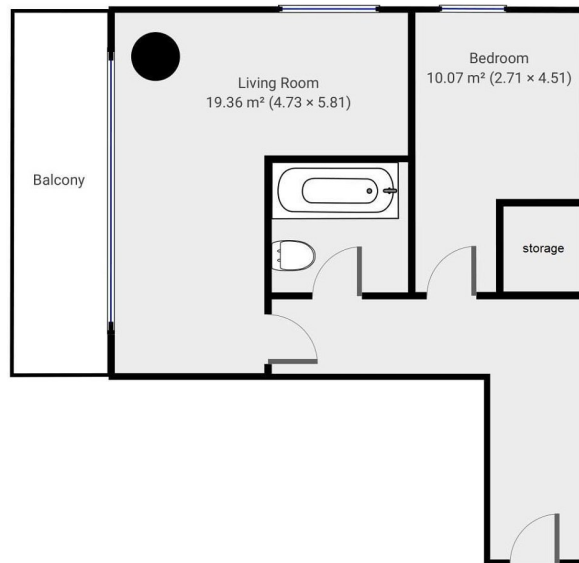


- 9th Floor One Bedroom Apartment
- Residents Gymnasium
- Amazing Location
- EPC B
- Chain Free
- Stunning River Views
- 24 Hour Concierge
- Private Balcony
- Council Tax Band B
- Viewing Essential

Landmark Tower, E14

Total Area: 46.3 sq metres / 498 sq feet approx.

▼ 9th Floor



Please note: Whilst every attempt has been made to ensure the accuracy of our floor plans please note that measurements are approximate and no responsibility is taken for any error, omission or misstatement. The floor plans we produce are for representation purposes only and should be used as such by any prospective purchaser. No guarantee is given on the total square footage of the property if quoted on our plans. Any figure given is for initial guidance only and should not be relied on as a basis for valuation purposes.

9th floor one bedroom apartment with private balcony, located in the iconic Landmark West Tower, one of Canary Wharfs most vibrant and exciting neighbourhoods.