




## 3a Pixley Street

Guide Price £375,000

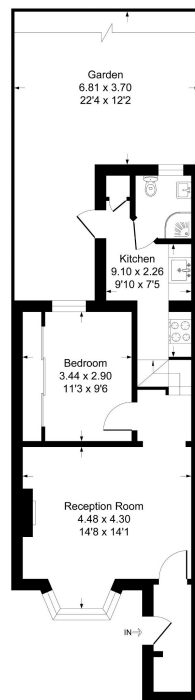
 1  1  1



- One Bedroom Victorian Conversion Flat
- Fitted Modern Kitchen
- Shower Room
- Leasehold Approx 186 Years
- EPC Band C
- Fantastic Condition
- Spacious Bedroom With Fitted Wardrobes
- 18 Minutes Walk Into Canary Wharf
- Council Tax Band B
- Ground Rent £150.00 P.A.

## Pixley Street

Approximate Gross Internal Floor Area = 44.1 sq m / 475 sq ft



Lower Ground Floor

Illustration for identification purposes only, measurements are approximate, not to scale.

Guide Price £375,000 to £380,000

Henry Wiltshire are delighted to bring to the market this large, spacious one bedroom Victorian conversion flat presented in fantastic condition. Boasting a very long lease (recently renewed) and no service charge we strongly recommend your immediate viewing to appreciate this property.