



HINTON
residential

SALES, LETTINGS & MANAGEMENT

Brooke Avenue

Harrow HA2 0NF

- Modern throughout
- Guest W.C
- Semi Detached
- Three double bedroom

Asking Price Of £635,000

EPC Rating '59'



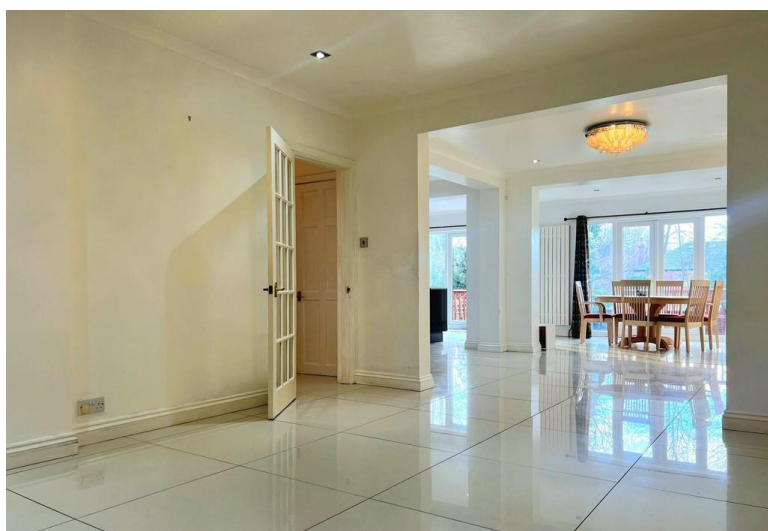


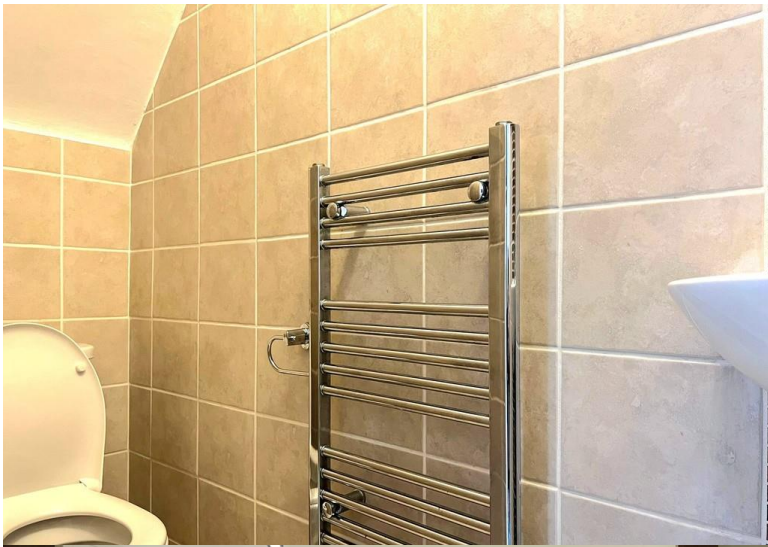
Property Description

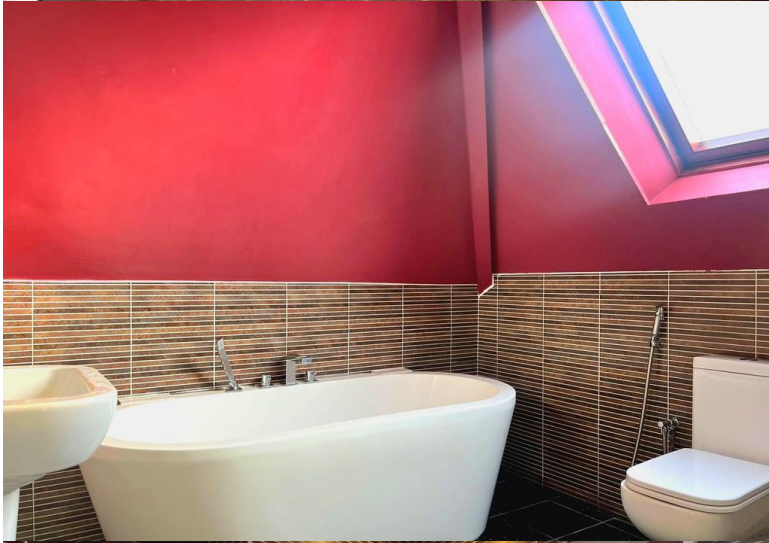
A fantastic and extremely modern THREE DOUBLE BEDROOM semi-detached house with off street parking via a gated entrance. The property is situated on a highly sought after road, within a 3 minute walk to South Harrow station (Piccadilly line) and other local shops and transports facilities. The property benefits from being finished to high standard throughout, has tasteful kitchen and bathroom fittings and has an excellent entertaining space downstairs with a wonderful rear garden.

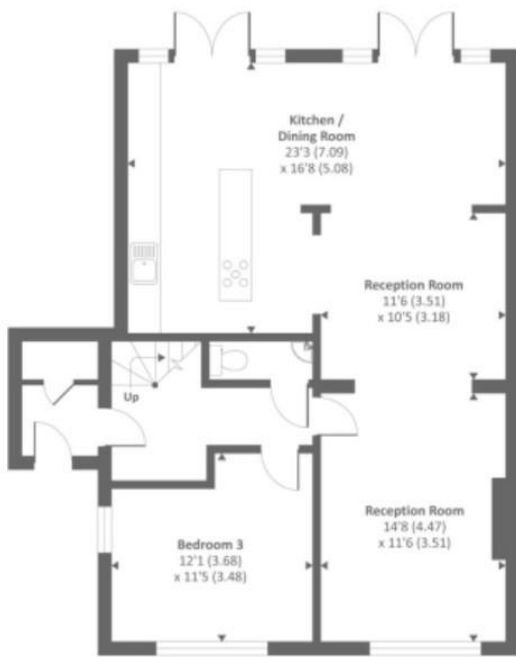
SCHOOLS

Orley Farm School - Independent
Weldon Park Academy - Ofsted 'Good'
Roxeth Primary School - Ofsted 'Good'
The John Lyon School - Independent
Whitmore High School - Ofsted 'Outstanding'
Greenwood High School - Ofsted 'Good'
Grange Primary School -- Ofsted 'Good'
St Anselm's Catholic Primary Shool - Ofsted 'Outstanding'
Harrow School - Independent

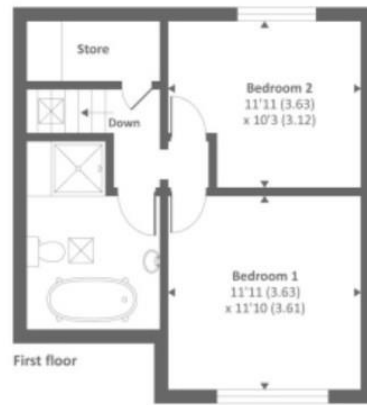








Ground floor



First floor

Approx. Gross internal floor area 1300 SQFT / 120.7 SQM

Score	Energy rating	Current	Potential
92+	A		
81-91	B		
69-80	C		77 C
55-68	D	59 D	
39-54	E		
21-38	F		
1-20	G		