



# Dovecote Gardens

Mortlake, SW14

£2,100 per month  
(£484.62 per week)

A contemporary two bedroom apartment located in this lovely development in Mortlake with good storage, off street parking and walking distance to transport links including Mortlake and Barnes Bridge stations, and also amenities of Barnes and East Sheen. The property offers excellent living space with two very good sized double bedrooms with built in wardrobes and a living room with a bright and sunny aspect. Comprises: entrance hall with hallway storage, large living room, separate kitchen, two double bedrooms with wardrobes, family bathroom plus allocated off street parking.

Dovecote Gardens is a sought after small development situated conveniently for the amenities of Barnes, Mortlake and East Sheen. The 209 bus route to Hammersmith is on the doorstep and Barnes Bridge and Mortlake stations are within easy walking distance. The River Thames towpath and Richmond Park are also very near.



# Dovecote Gardens

## Mortlake, SW14

- Two Bedroom Apartment
- Allocated parking
- Sought after location
- Excellent transport links



**Minimum Term:** 12 months  
**Deposit Required:** £2,423.08  
**Local Authority:** London Borough Of Richmond Upon Thames  
**Council Tax Band:** E  
**EPC Rating:** C  
**Unfurnished**

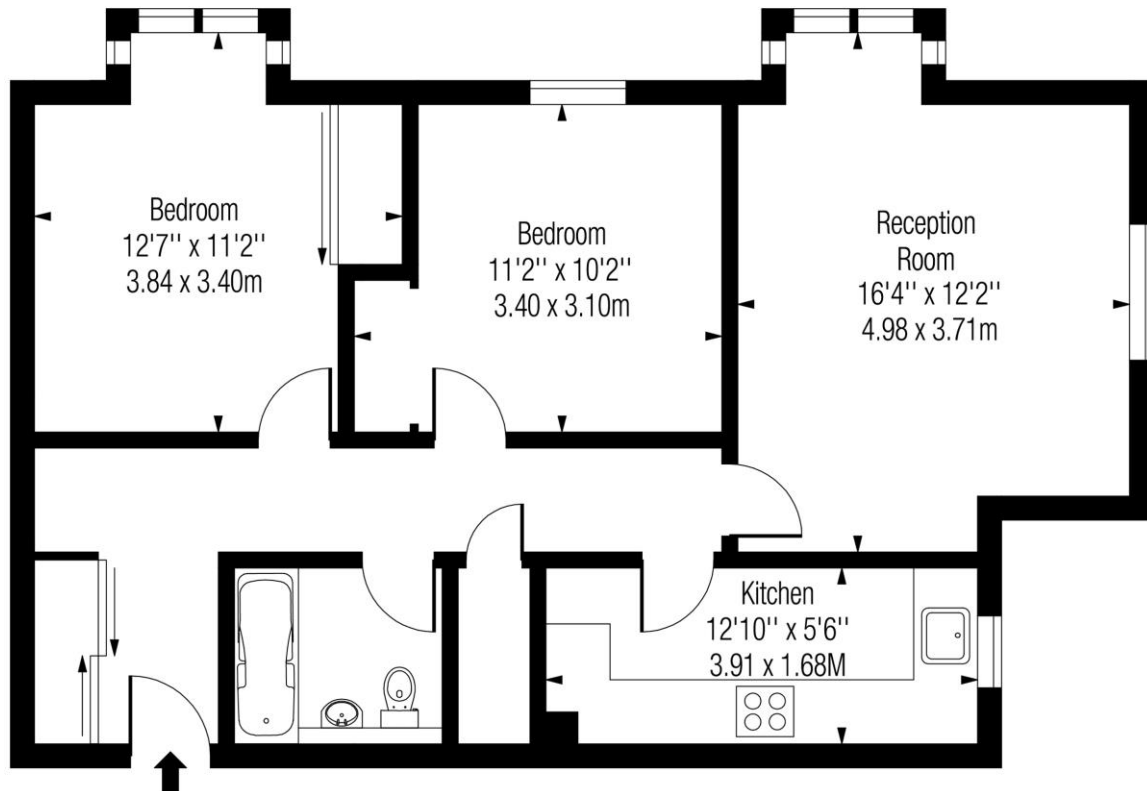
Energy Efficiency Rating		
	Current	Potential
Very energy efficient - lower running costs		
<b>A</b> (92-100)		
<b>B</b> (81-91)		
<b>C</b> (69-80)	80	83
<b>D</b> (55-68)		
<b>E</b> (39-54)		
<b>F</b> (21-38)		
<b>G</b> (1-20)		
Not energy efficient - higher running costs		
England, Scotland & Wales EU Directive 2002/91/EC		

### *Chestertons East Sheen Lettings*

254a Upper Richmond Road West  
 East Sheen  
 London  
 SW14 8AG  
 sheenlettingsusers@chestertons.co.uk  
 02081040580  
 chestertons.co.uk

Additional tenant charges apply (fees apply to non-AST tenancies only)  
 Tenancy Agreement Fee: £300  
 References per Tenant/Guarantor: £60  
 Inventory check (approx. £100 – £250 inc. VAT)  
[chestertons.co.uk/property-to-rent/applicable-fees](https://www.chestertons.co.uk/property-to-rent/applicable-fees)

## Dovecote Gardens, SW14



First Floor

**Approx Gross Internal Area**

**645 Sq Ft - 59.92 Sq M**

Includes Limited Use Area - 3 Sq Ft

Drawn in accordance with IPMS 3B: Residential

Illustration For Identification Purposes Only - Not to Scale

[www.homespacestudio.co.uk](http://www.homespacestudio.co.uk) - Ref. No. 51174

