



Hertford Avenue

East Sheen, SW14

£8,500 per month
(£1,961.54 per week)

SHORT LET: An impressive five-bedroom house, available for short-let, on this desirable Parkside Road, close to Palewell Common and Richmond Park.

The ground floor includes a grand hallway, a utility room, a w/c, a large study and a spacious living room. There is also a bright open-plan, additional, living room, a well-equipped kitchen and a dining area which leads out to the lovely well-maintained garden.

The first floor comprises three double bedrooms, one of which is the principal bedroom with an en-suite bathroom, an additional single bedroom, and a separate bathroom with a toilet. Moving up to the second floor, there is a further bedroom, a shower room and plenty of eaves storage.

Hertford Avenue is a popular Parkside location situated close to Palewell Common. Local amenities are found along Upper Richmond Road West. Mortlake train station is approximately 0.7 miles away, offering excellent transport links into the City and the West End.



Hertford Avenue

East Sheen, SW14

- Short let
- Detached period house
- Five bedrooms
- Private garden
- Furnished
- Pets allowed
- Parkside location



Minimum Term: 2 months
Deposit Required: £9,807.69
Local Authority: London Borough of Richmond upon Thames
Council Tax Band: G
EPC Rating: D
Furnished

Energy Efficiency Rating		
	Current	Potential
Very energy efficient - lower running costs		
A (92-100)		
B (81-91)		
C (69-80)		
D (55-68)	59	76
E (39-54)		
F (21-38)		
G (1-20)		
Not energy efficient - higher running costs		
England, Scotland & Wales		EU Directive 2002/91/EC

Chestertons East Sheen Lettings

254a Upper Richmond Road West
 East Sheen
 London
 SW14 8AG
sheenlettingsusers@chestertons.co.uk
 02081040580
chestertons.co.uk

Additional tenant charges apply (fees apply to non-AST tenancies only)
 Tenancy Agreement Fee: £300
 References per Tenant/Guarantor: £60
 Inventory check (approx. £100 – £250 inc. VAT)
chestertons.co.uk/property-to-rent/applicable-fees

Hertford Avenue, SW14

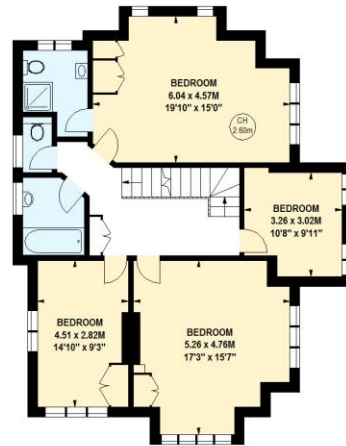
Approximate gross internal area
243.77 sq m / 2624 sq ft



Key :
CH - Ceiling Height



1272 sq ft
Ground Floor



1045 sq ft
First Floor



307 sq ft
Second Floor

This floor plan is a representation for guidance purposes only, not for valuation.
Any figure is approximate and must not be relied on as a statement of fact.
Copyright of Wyatt Dixon Homes

