



Woking Close

East Sheen, SW15

£2,200 per month
(£507.69 per week)

A bright and spacious three-bedroom split level flat, located in East Sheen within close proximity to Barnes and Putney.

On the ground floor you will find a fully equipped kitchen with a gas cooker, dishwasher and washing machine and a large storage cupboard. There is also a downstairs W.C and large light living/dining room.

To the first floor, there are two double bedrooms with built in storage and a further single bedroom. Also on this level is a modern family bathroom.

The apartment can be offered on a furnished, part-furnished or unfurnished basis.

Woking Close is situated with easy access to Central London, being only 20 minutes to London Waterloo Station and 24 minutes to Victoria Station from Barnes Rail Station.

A short walk away is East Sheen Primary School and Richmond Park Academy, making this stunning flat perfect for a family.

CHESTERTONS



Woking Close

London, SW15

- Three Double Bedrooms
- Maisonette
- Split-level
- Close to Transport Links



Minimum Term: 12 months
Deposit Required: £2,538.46
Local Authority: London Borough of Wandsworth
Council Tax Band: C
EPC Rating: C

Score	Energy rating	Current	Potential
92+	A		
81-91	B		
69-80	C	76 C	78 C
55-68	D		
39-54	E		
21-38	F		
1-20	G		

Chestertons East Sheen Lettings

254a Upper Richmond Road West
 East Sheen
 London
 SW14 8AG
 sheenlettingsusers@chestertons.co.uk
 02081040580
 chestertons.co.uk

Additional tenant charges apply (fees apply to non-AST tenancies only)
 Tenancy Agreement Fee: £300
 References per Tenant/Guarantor: £60
 Inventory check (approx. £100 – £250 inc. VAT)
chestertons.co.uk/property-to-rent/applicable-fees

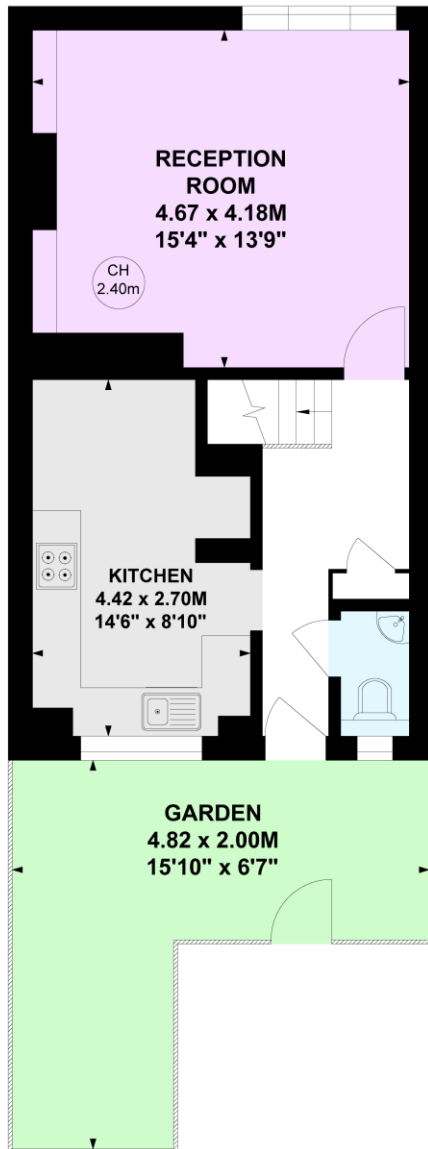
Woking Close, SW15

Approximate gross internal area

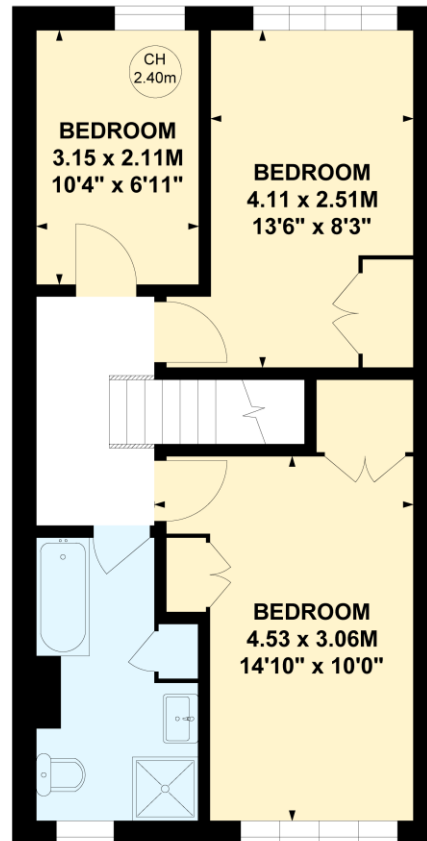
86.62 sq m / 932 sq ft

Key :

CH - Ceiling Height



Ground Floor



First Floor

Not to scale, for guidance only and must not be relied upon as a statement of fact.

All measurements and areas are approximate only

