



# Arabella Drive

East Sheen, SW15

£2,600 per month  
(£600 per week)

A brilliant three-bedroom end-of-terrace house with a private garden, located near Barnes Station and Barnes Common.

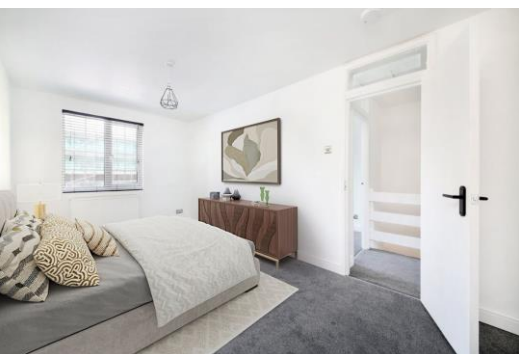
The ground floor features a spacious open plan kitchen and reception room with plenty of natural light that opens out to the delightful garden, as well as a convenient bathroom.

Upstairs, there are three double bedrooms and a family bathroom.

Arabella Drive is just 0.6 miles from Barnes Station, offering regular trains to Waterloo and direct access to Hammersmith via the 33 bus. The property is also close to Richmond Park and Barnes Common, known as "Barnes Recreation Ground."

**CHESTERTONS**





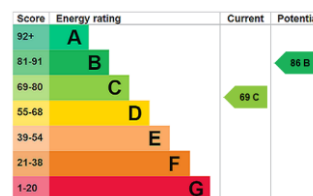
# Arabella Drive

## East Sheen, SW15

- Three Double Bedrooms
- Open Plan Kitchen/Living
- Garden
- Recently Refurbished



**Minimum Term:** 12 months  
**Deposit Required:** £3,000.00  
**Local Authority:** London Borough of Richmond upon Thames  
**Council Tax Band:** D  
**EPC Rating:** C  
**Unfurnished**

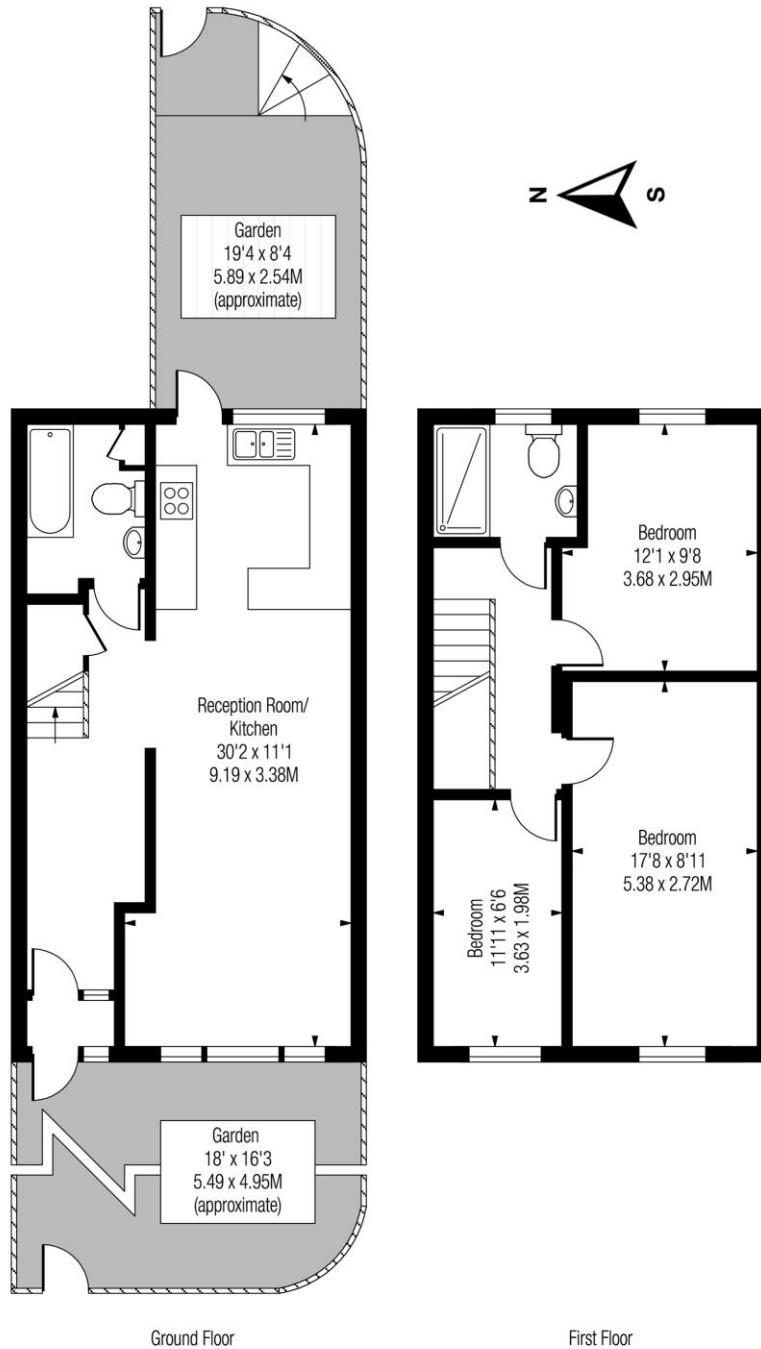


### *Chestertons East Sheen Lettings*

254a Upper Richmond Road West  
 East Sheen  
 London  
 SW14 8AG  
[sheenlettingsusers@chestertons.co.uk](mailto:sheenlettingsusers@chestertons.co.uk)  
 02081040580  
[chestertons.co.uk](http://chestertons.co.uk)

Additional tenant charges apply (fees apply to non-AST tenancies only)  
 Tenancy Agreement Fee: £300  
 References per Tenant/Guarantor: £60  
 Inventory check (approx. £100 – £250 inc. VAT)  
[chestertons.co.uk/property-to-rent/applicable-fees](http://chestertons.co.uk/property-to-rent/applicable-fees)

# Arabella Drive, SW15



**Approx Gross Internal Area**

**946 Sq Ft - 87.88 Sq M**

Includes Limited Use Area - 13 Sq Ft

Drawn in accordance with IPMS 2: Residential

Illustration For Identification Purposes Only - Not to Scale

www.homespacestudio.co.uk - Ref. No. 52493

