



Richmond Park Road

East Sheen, SW14

£6,500 per month
(£1,500 per week)

A beautiful period five bedroom house with off-street parking close to Richmond Park and the amenities of East Sheen.

CHESTERTONS



Richmond Park Road

East Sheen, SW14

- Period Family Home
- Beautifully Presented
- Off Street Parking
- Loft Conversion
- Large Garden



A beautiful five bedroom two bathroom Period family home on a sought after road in East Sheen close to Richmond Park.

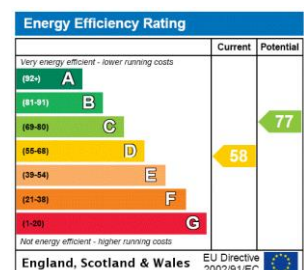
This spacious house combines period features with a contemporary twist and is light and airy throughout. The ground floor boasts a large open plan kitchen/breakfast room with integrated appliances, ample entertaining space and sliding doors opening up onto a good sized established garden. There is a formal reception room to the front of the house with a large bay window and a wood burning stove. The ground floor also provides a well-equipped utility room with wc.

The first floor offers three double bedrooms and a family bathroom with a full sized bath and separate shower. Stairs lead up to two further double bedrooms, one with a Juliet balcony overlooking the garden and the other offering ample eaves storage. There is also another modern bathroom with a large walk-in shower.

This wonderful house has an enviable position close to Richmond Park and the amenities of East Sheen. Mortlake railway station is within walking distance with direct trains into London Waterloo and Clapham Junction.

East Sheen has a choice of excellent schools and is an extremely popular area for families.

Minimum Term: 12 months
Deposit Required: £9,000.00
Local Authority: London Borough Of Richmond Upon Thames
Council Tax Band: G
EPC Rating: D
Unfurnished



Chestertons East Sheen Lettings

254a Upper Richmond Road West
 East Sheen
 London
 SW14 8AG
 sheenlettingsusers@chestertons.co.uk
 02081040580
 chestertons.co.uk

Additional tenant charges apply (fees apply to non-AST tenancies only)
 Tenancy Agreement Fee: £300
 References per Tenant/Guarantor: £60
 Inventory check (approx. £100 – £250 inc. VAT)
 chestertons.co.uk/property-to-rent/applicable-fees

Richmond Park Road, SW14

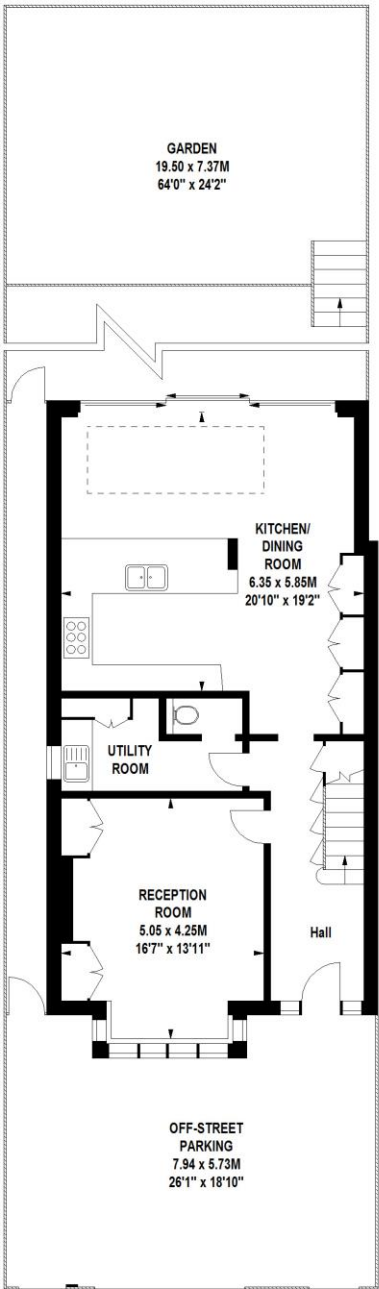
Approximate gross internal area

192.77 sq m / 2075 sq ft

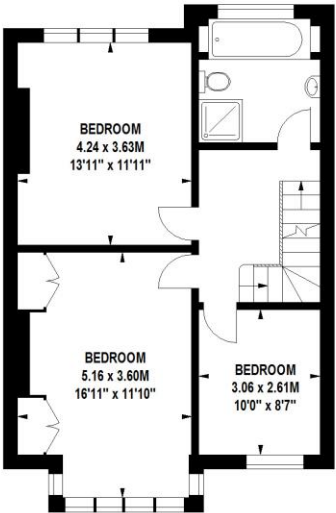
(Including Eaves Storage)

Eaves Storage

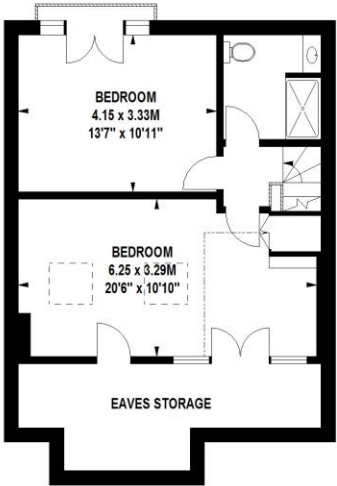
11.89 sq m / 128 sq ft



Ground Floor
858 sq ft



First Floor
630 sq ft



Second Floor
459 sq ft

Illustration For Identification Purposes Only. Not To Scale
*Floorplan Drawn According To RICS Guidelines
Copyright of FeaturePRO

Chesterton UK Services Limited trading as Chestertons for themselves and for the vendor of this property whose agents they are, give notice that (i) these particulars do not constitute any part of an offer or contract, (ii) all statements contained within these particulars are made without responsibility on the part of Chestertons or the vendor, (iii) whilst made in good faith, none of the statements contained within these particulars are to be relied upon as a statement or representation of fact, (iv) any intending purchasers must satisfy themselves by inspection or otherwise as to the correctness of each of the statements contained within these particulars, (v) the vendor does not make or give either Chestertons or any person in their employment any authority to make or give representation or warranty whatsoever in relation to this property. Wide angle lenses may be used. ©Copyright Chestertons | Chesterton Global Ltd | Registered Office 40 Connaught Street, Hyde Park, London W2 2AB Registered Company Number 05334580.



This paper is
100% recyclable