



Hertford Avenue  
East Sheen, SW14

CHESTERTONS









An impressive five-bedroom house, available for short-let, on this desirable Parkside Road, close to Palewell Common and Richmond Park.

The ground floor includes a grand hallway, a utility room, a w/c, a large study and a spacious living room. There is also a bright open-plan, additional, living room, a well-equipped kitchen and a dining area, which leads out to the lovely well-maintained garden.

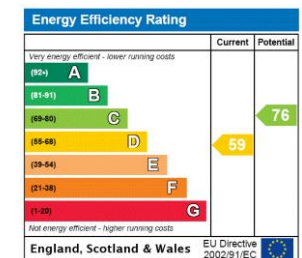
The first floor comprises three double bedrooms, one of which is the principal bedroom with an en-suite bathroom, an additional single bedroom, and a separate bathroom with a toilet. Moving up to the second floor, there is a further bedroom, a shower room and plenty of eaves storage.

Hertford Avenue is a popular Parkside location situated close to Palewell Common. Local amenities are found along Upper Richmond Road West. Mortlake train station is approximately 0.7 miles away, offering excellent transport links into the City and the West End.

- SHORT LET
- Detached period house
- Five bedrooms
- Private garden
- Furnished
- Pets allowed
- Parkside location

**£8,000 pcm**

Additional tenant charges apply (fees apply to non-AST tenancies only)  
 Tenancy Agreement Fee: £300  
 References per Tenant/Guarantor: £60  
 Inventory check (approx. £100 – £250 inc. VAT)  
[chestertons.co.uk/property-to-rent/applicable-fees](http://chestertons.co.uk/property-to-rent/applicable-fees)



**Minimum Term:** 1 month  
**Deposit Required:** £9,230.77  
**Local Authority:** Richmond upon Thames  
**Council Tax Band:** G  
**EPC Rating:** D  
**Furnished**

**Chestertons East Sheen Lettings**

254a Upper Richmond Road West  
 East Sheen  
 London  
 SW14 8AG

sheen@chestertons.co.uk  
 02081040580  
[chestertons.co.uk](http://chestertons.co.uk)

## Hertford Avenue, SW14

Approximate gross internal area

301.65 sq m / 3247 sq ft  
(Including Eaves Storage)

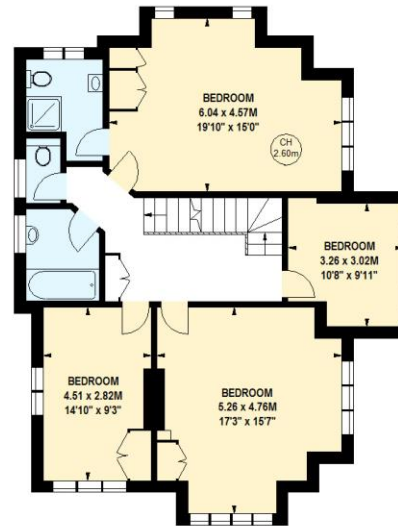
Eaves Storage  
40.04 sq m / 431 sq ft



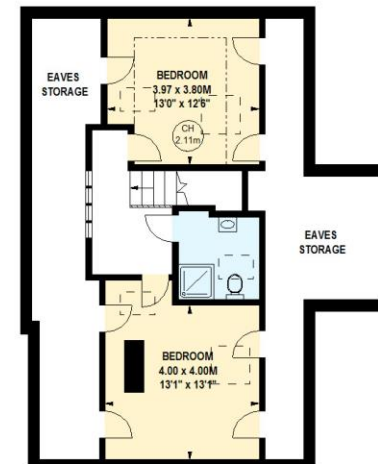
Key :  
CH - Ceiling Height



1272 sq ft  
**Ground Floor**



1045 sq ft  
**First Floor**



499 sq ft  
**Second Floor**

This floor plan is a representation for guidance purposes only, not for valuation.  
Any figure is approximate and must not be relied on as a statement of fact.  
Copyright of Wyatt Dixon Homes



Chesterton Global Ltd trading as Chestertons for themselves and for the vendor of this property whose agents they are, give notice that (i) these particulars do not constitute any part of an offer or contract, (ii) all statements contained within these particulars are made without responsibility on the part of Chestertons or the vendor, (iii) whilst made in good faith, none of the statements contained within these particulars are to be relied upon as a statement or representation of fact, (iv) any intending purchasers must satisfy themselves by inspection or otherwise as to the correctness of each of the statements contained within these particulars, (v) the vendor does not make or give either Chestertons or any person in their employment any authority to make or give representation or warranty whatsoever in relation to this property. Wide angle lenses may be used. ©Copyright Chestertons | Chesterton Global Ltd | Registered Office 40 Connaught Street, Hyde Park, London W2 2AB Registered Company Number 05334580.



This paper is  
100% recyclable