



Lewin Road

East Sheen, SW14

SHORT LET

£4,000 per month
(£923.08 per week)

A beautifully finished modern three double bedroom house available for short let.

The ground floor comprises a large open-plan reception, a fully fitted kitchen and a dining room that leads to the patio garden with a decked area.

On the first floor, there are two spacious double bedrooms and a family bathroom. The second floor has a further double bedroom with an ensuite shower room and plenty of eaves storage.

The property is located within the sought-after area of 'The Royals' and is close to Mortlake station (0.5 miles away) and the amenities of East Sheen.



Lewin Road

East Sheen, SW14

- Three Bedroom
- Two Bathrooms
- Modern Finish
- Close to Mortlake Station



Minimum Term: 1 months
Deposit Required: £1,846.15
Local Authority: London Borough of Richmond upon Thames
Council Tax Band: F
EPC Rating: D
Furnished

Energy Efficiency Rating		Current	Potential
Very energy efficient - lower running costs			
(92-100)	A		
(81-91)	B		
(69-80)	C		
(55-68)	D	60	
(39-54)	E		
(21-38)	F		
(1-20)	G		
Not energy efficient - higher running costs			
England, Scotland & Wales		EU Directive 2002/91/EC	

Chestertons East Sheen Lettings

254a Upper Richmond Road West
 East Sheen
 London
 SW14 8AG
 sheen@chestertons.co.uk
 02081040580
 chestertons.co.uk

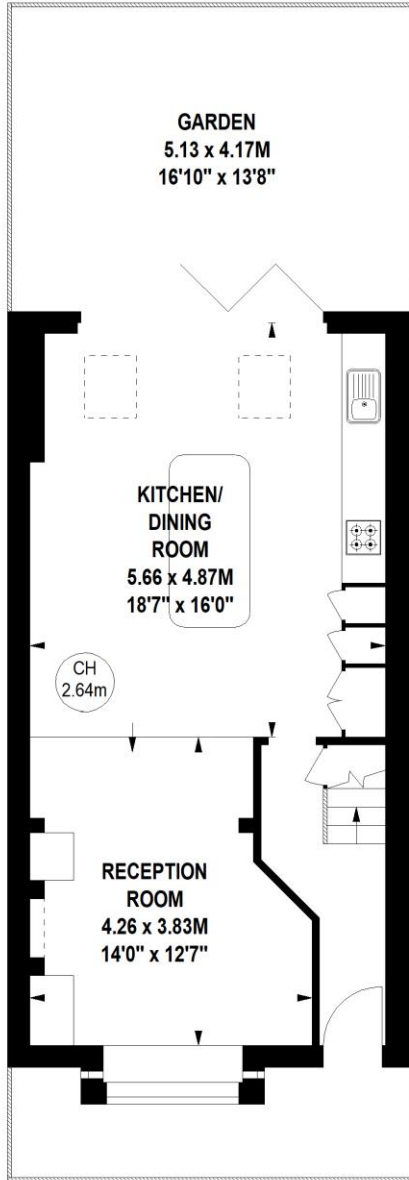
Additional tenant charges apply (fees apply to non-AST tenancies only)
 Tenancy Agreement Fee: £300
 References per Tenant/Guarantor: £60
 Inventory check (approx. £100 – £250 inc. VAT)
chestertons.co.uk/property-to-rent/applicable-fees

Lewin Road, SW14

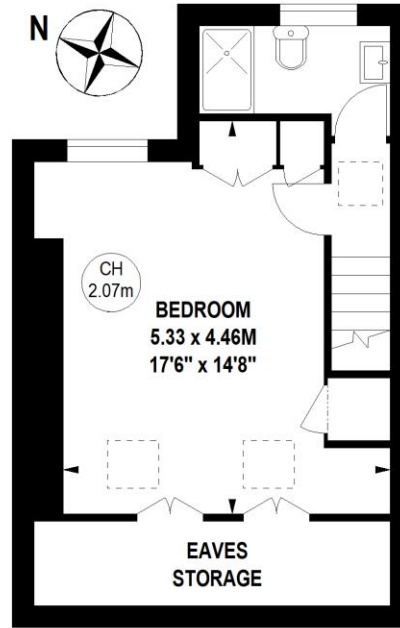
Approximate gross internal area
120.86 sq m / 1301 sq ft
(Including Eaves Storage)

Eaves Storage
5.57 sq m / 60 sq ft

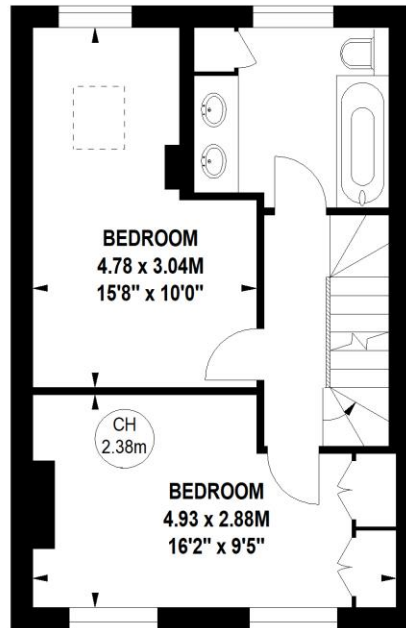
Key :
CH - Ceiling Height



Ground Floor



Second Floor



First Floor

Not to scale, for guidance only and must not be relied upon as a statement of fact.
All measurements and areas are approximate only