



Gilpin Avenue

East Sheen, SW14

SHORT LET

£8,500 per month
(£1,961.54 per week)

A delightful home on the ever popular Gilpin Avenue close to Palewell Common and East Sheen Primary School.

The ground floor provides good entertaining space with a separate reception room to the front with a bay window, feature fireplace and built-in storage. The open plan kitchen/dining room is situated to the rear of the property and includes a pantry cupboard, bi-fold doors out to the rear garden and a good size, separate utility room.

The first floor comprises of the master bedroom with bay window, built-in wardrobes and feature fireplace along with the second double bedroom, a further single room and a bathroom. The loft has



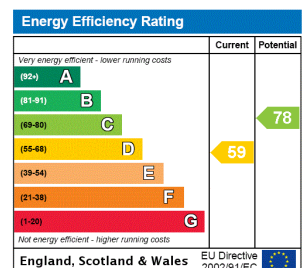
Gilpin Avenue

East Sheen, SW14

- 5 bedroom family home
- Close to East Sheen Primary school & Palewell Common
- Modern finish throughout
- Almost 2000 sqft



Minimum Term: 2 months
Deposit Required: £3,923.08
Local Authority: London Borough of Richmond upon Thames
Council Tax Band: G
EPC Rating: D
Unfurnished



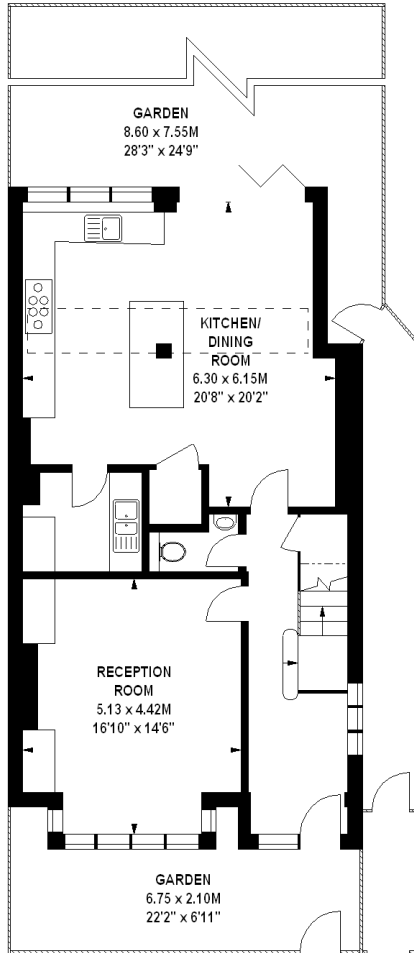
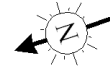
Chestertons East Sheen Lettings

254a Upper Richmond Road West
 East Sheen
 London
 SW14 8AG
 sheen@chestertons.co.uk
 02081040580
 chestertons.co.uk

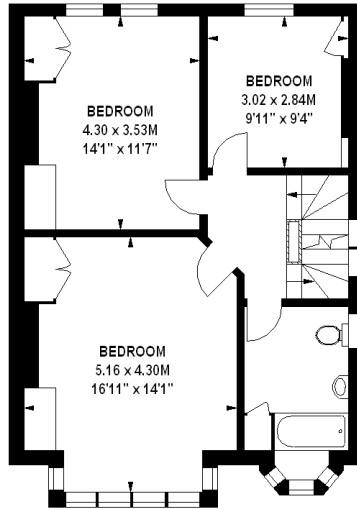
Additional tenant charges apply (fees apply to non-AST tenancies only)
 Tenancy Agreement Fee: £300
 References per Tenant/Guarantor: £60
 Inventory check (approx. £100 – £250 inc. VAT)
chestertons.co.uk/property-to-rent/applicable-fees

Gilpin Avenue, SW 14

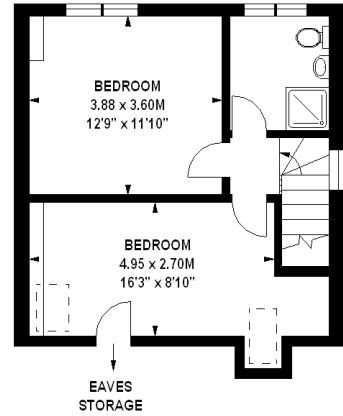
Approximate gross internal area
177.53 sq m / 1911 sq ft



Ground Floor
844 sq ft



First Floor
642 sq ft



Second Floor
425 sq ft

Illustration For Identification Purposes Only. Not To Scale
*Floorplan Drawn According To RICS Guidelines
Copyright of FeaturePRO