



John Dee House

Mortlake High Street, SW14

£1,750 per month
(£403.85 per week)

A spacious two bedroom second floor apartment close to Mortlake Station and Barnes bridge stations.



John Dee House

Mortlake High Street, SW14

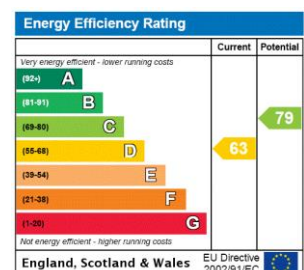
- Two Bedrooms
- Apartment
- Close to Mortlake Station
- Second Floor



A stunning two bedroom second floor apartment close to Mortlake Station and Barnes bridge station.

The flat benefits from a separate kitchen, a large reception room that has a private balcony and is not overlooked from the main road.

Minimum Term: 12 months
Deposit Required: £2,019.23
Local Authority: London Borough of Richmond upon Thames
Council Tax Band: C
EPC Rating: D
Furnished, Part Furnished, Unfurnished



Chestertons East Sheen Lettings

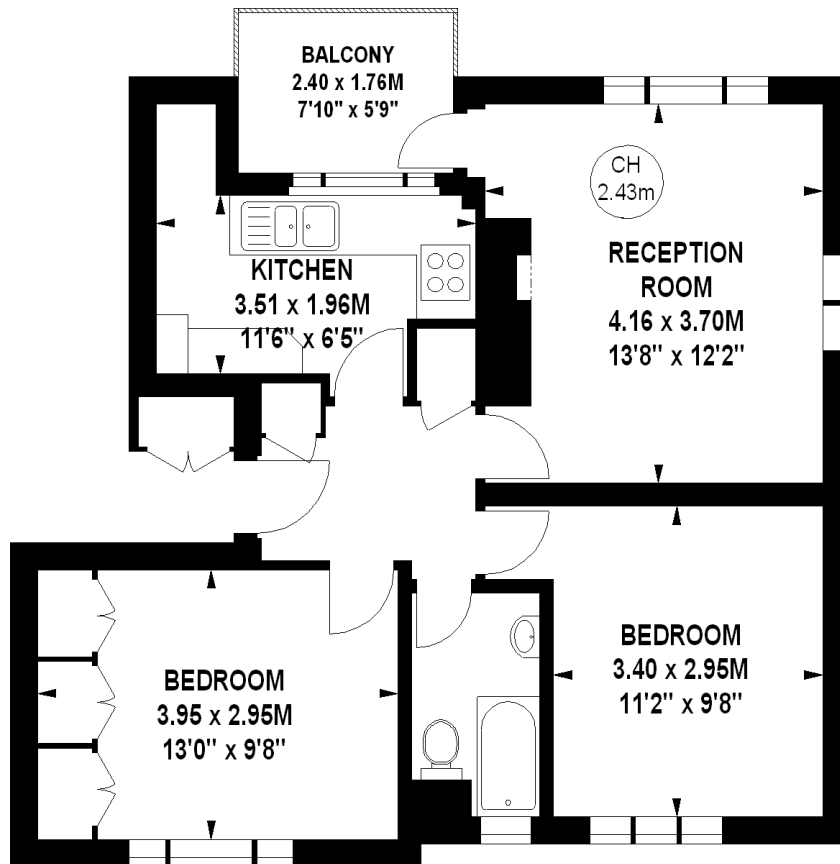
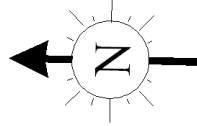
254a Upper Richmond Road West
 East Sheen
 London
 SW14 8AG
 sheen@chestertons.co.uk
 02081040580
 chestertons.co.uk

Additional tenant charges apply (fees apply to non-AST tenancies only)
 Tenancy Agreement Fee: £300
 References per Tenant/Guarantor: £60
 Inventory check (approx. £100 – £250 inc. VAT)
chestertons.co.uk/property-to-rent/applicable-fees

John Dee House, SW14

Approximate gross internal area

56.11 sq m / 604 sq ft



Second Floor

The floor plan is not to scale and measurements and areas shown are approximate and therefore should be used for illustrative purposes only.

The plan has been prepared in accordance with the RICS code of Measuring Practice and whilst we have confidence in the information produced, it must not be relied on.

If there is any aspect of particular importance, you should carry out or commission your own inspection of the property.

Copyright of FeaturePRO.

