



Rock Avenue

East Sheen, SW14

£3,000 per month
(£692.31 per week)

Situated in the enviable "The Royals" area of East Sheen and moments from the leafy village of Barnes, this beautiful two-bedroom cottage is ideal for a small family or professional couple.



Rock Avenue

East Sheen, SW14

- Two bedroom cottage
- Generous living space
- Paved patio garden
- Royals location
- Close to Mortlake & Barnes



This is a spacious two-bedroom cottage with a large living space, located on a quiet road in the "Royals" area of East Sheen.

The ground floor features a wonderful living/dining room with plenty of windows. The galley-style kitchen has double doors leading to a paved patio garden. Additionally, there is a downstairs WC on this floor.

Both bedrooms on the first floor are generous doubles, and you will also find the main bathroom, which boasts a modern design.

The cottage is conveniently located, just 0.3 miles from Mortlake station and is well situated for both Barnes & Mortlake.

Viewing is highly recommended.

Minimum Term:	12 months
Deposit Required:	£3,461.54
Local Authority:	London Borough of Richmond upon Thames
Council Tax Band:	E
EPC Rating:	D
Unfurnished	

Energy Efficiency Rating		Current	Potential
Very energy efficient - lower running costs			
(92+)	A		
(81-91)	B		
(69-80)	C		79
(55-68)	D	57	
(39-54)	E		
(21-38)	F		
(1-20)	G		
Not energy efficient - higher running costs			
England, Scotland & Wales		EU Directive 2002/91/EC	

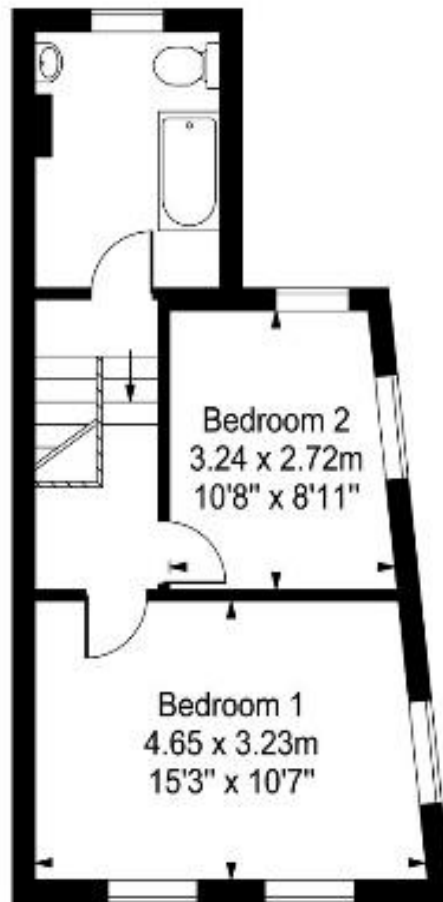
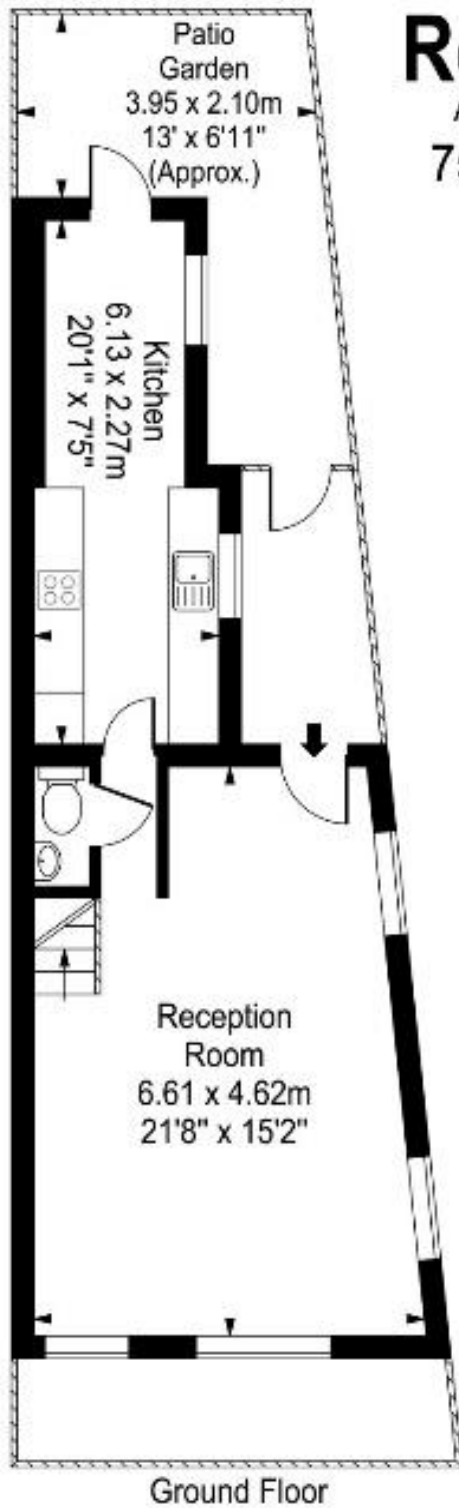
Chestertons East Sheen Lettings

254a Upper Richmond Road West
 East Sheen
 London
 SW14 8AG
 sheen@chestertons.co.uk
 02081040580
 chestertons.co.uk

Additional tenant charges apply (fees apply to non-AST tenancies only)
 Tenancy Agreement Fee: £300
 References per Tenant/Guarantor: £60
 Inventory check (approx. £100 – £250 inc. VAT)
chestertons.co.uk/property-to-rent/applicable-fees

Rock Avenue

Approx. Gross Internal Area
75 Sq M - 807 Sq Ft



First Floor

Every attempt is made to assure accuracy, however measurements are approximate and for illustrative purposes only. Not to scale.
Floor plan by www.frameworkphotos.co.uk

