



# Palewell Park

East Sheen, SW14

£5,500 per month  
(£1,269.23 per week)

A spacious, newly refurbished five bedroom home located on a desirable road in East Sheen.

**CHESTERTONS**



# Palewell Park

East Sheen, SW14

- Five Bedrooms
- Newly Refurbished
- Private Garden
- Double Reception Room



An impressive family home situated on a desirable road close to the amenities of East Sheen. On the ground floor you are presented with a spacious entrance hall that leads to a double reception room with space for dining. The ground floor also comprises a separate office space, W/C and spacious kitchen leading out to a large private garden. The first floor has 4 bedrooms with a bathroom, and the second floor has a further large bedroom with a bathroom and plenty of storage. Positioned on this very popular road, the house is ideally located in relation to all of the amenities found in East Sheen. In particular, the house is close to the banks of the River Thames with walks to Kew Gardens & Barnes. Mortlake station, with services in to central London is within walking distance. Richmond and the surrounding areas are home to a large number of first class schools, including East Sheen Primary, Sheen Mount Primary, Thomson House & Tower House.

---

**Minimum Term:** 12 months  
**Deposit Required:** £7,615.38  
**Local Authority:** London Borough of Richmond upon Thames  
**Council Tax Band:** G  
**EPC Rating:** E  
**Unfurnished**

---

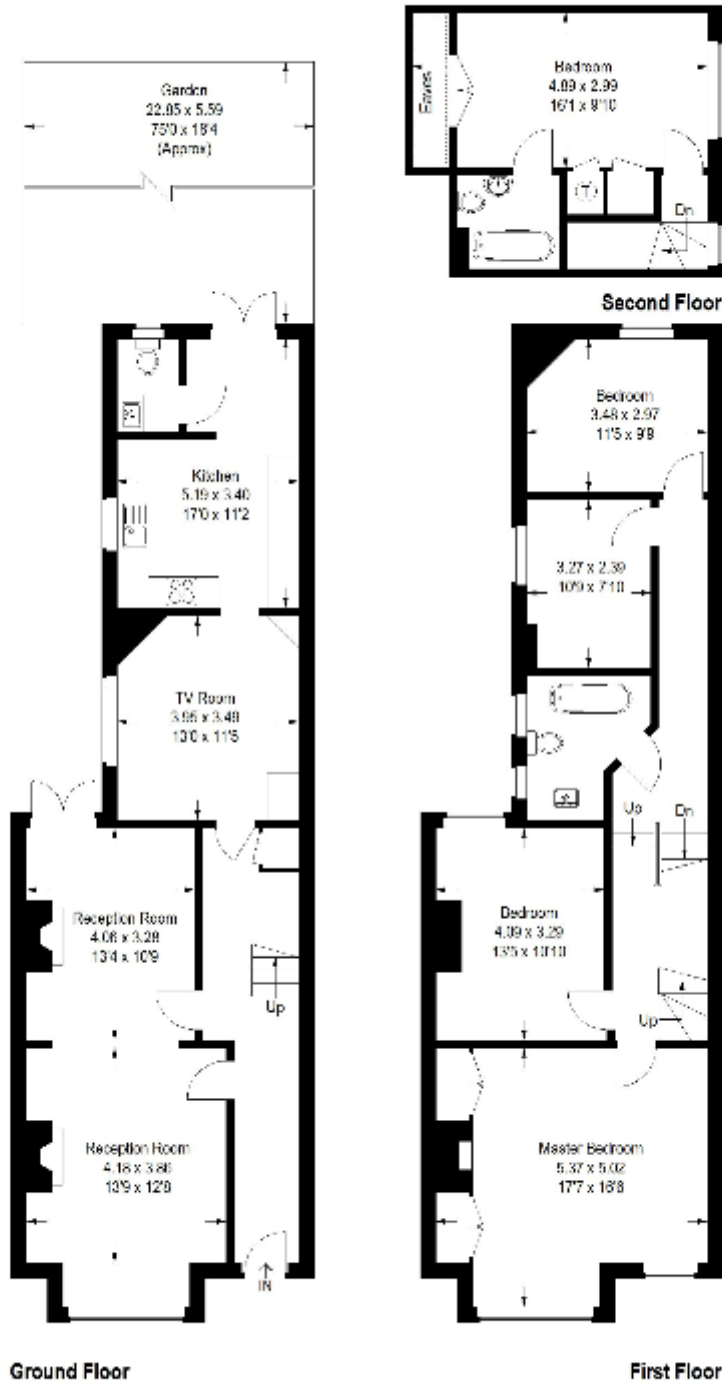
### *Chestertons East Sheen Lettings*

254a Upper Richmond Road West  
East Sheen  
London  
SW14 8AG  
sheen@chestertons.co.uk  
02081040580  
chestertons.co.uk

Additional tenant charges apply (fees apply to non-AST tenancies only)  
Tenancy Agreement Fee: £300  
References per Tenant/Guarantor: £60  
Inventory check (approx. £100 – £250 inc. VAT)  
[chestertons.co.uk/property-to-rent/applicable-fees](http://chestertons.co.uk/property-to-rent/applicable-fees)

**Palewell Park, East Sheen, SW14**

Approx. Gross Internal Area  
185.8 sq mt / 2000 sq ft



**Featherstone Leigh Ltd**

Every attempt is made to assure accuracy, however measurements are approximate and for illustrative purposes only. Not to scale.  
(ID255437)

