



Lincoln Lodge

Mortlake, SW14

£2,300 per month
(£530.77 per week)

A modern two bedroom, two bathroom apartment with private parking. Located close to the River Thames, Mortlake Station and the amenities of East Sheen.



Lincoln Lodge

Mortlake, SW14

- Private Parking
- Two Bathrooms
- Balcony
- Modern Finish



Lincoln Lodge is located in a lovely development close to the River Thames.

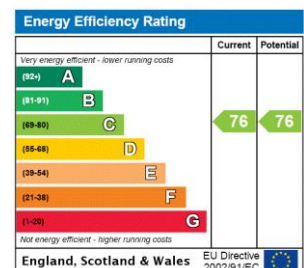
This stunning two bedroom, two bathroom apartment is finished to an immaculate standard, offers private parking as well as a private balcony. It is located on the third floor and there is convenient lift access.

Both bedrooms are double rooms, the main bedroom being en-suite. Both rooms also have built in wardrobes.

The kitchen/living/dining area is open plan and the kitchen has integrated appliances including dish washer. The balcony can be accessed through the living area.

The property is also conveniently located walking distance to Mortlake Station and the excellent amenities East Sheen has to offer.

Minimum Term: 12 months
Deposit Required: £2,653.85
Local Authority: Richmond upon Thames
Council Tax Band: D
EPC Rating: C
Furnished, Part Furnished, Unfurnished



Chestertons East Sheen Lettings

254a Upper Richmond Road West
 East Sheen
 London
 SW14 8AG
 sheen@chestertons.co.uk
 02081040580
 chestertons.co.uk

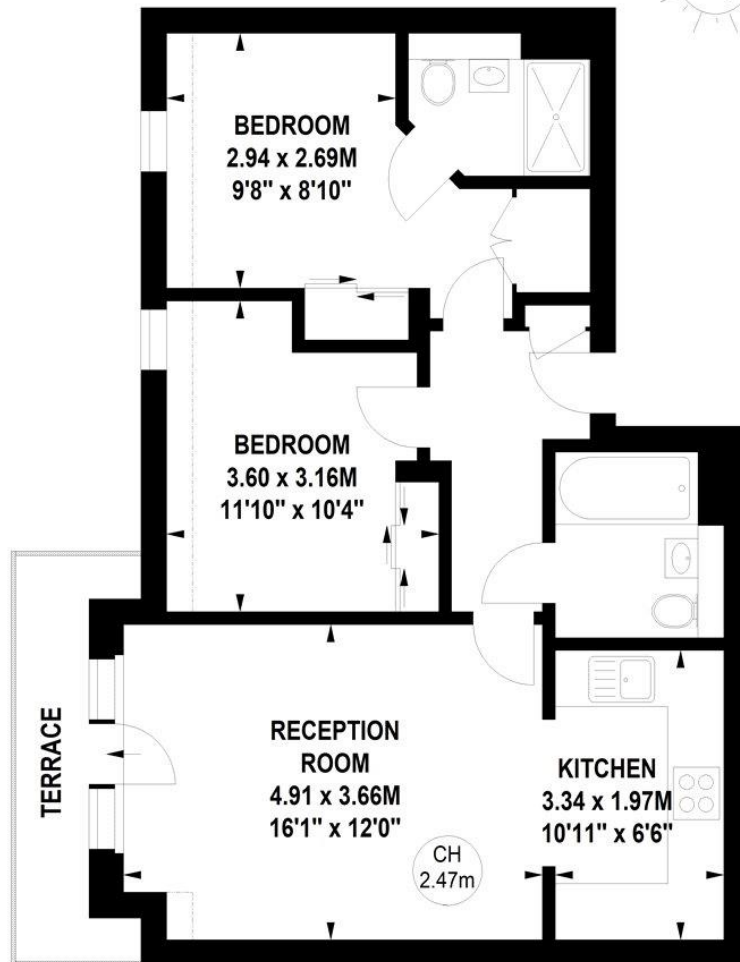
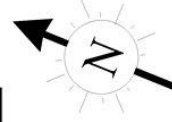
Additional tenant charges apply (fees apply to non-AST tenancies only)
 Tenancy Agreement Fee: £300
 References per Tenant/Guarantor: £60
 Inventory check (approx. £100 – £250 inc. VAT)
chestertons.co.uk/property-to-rent/applicable-fees

Lincoln Lodge, SW14

Approximate gross internal area

61.96 sq m / 667 sq ft

Key :
CH - Ceiling Height



Third Floor

The floor plan is not to scale and measurements and areas shown are approximate and therefore should be used for illustrative purposes only. The plan has been prepared in accordance with the RICS code of Measuring Practice and whilst we have confidence in the information produced, it must not be relied on.

If there is any aspect of particular importance, you should carry out or commission your own inspection of the property.

Copyright of FeaturePRO.

