



Upper Richmond Road West

East Sheen, SW14

£2,700 per month
(£623.08 per week)

A large 3 bedroom split level flat close to East Sheen Primary School and the amenities of East Sheen.

CHESTERTONS



Upper Richmond Road West

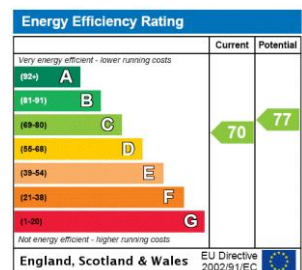
East Sheen, SW14

- Three Bedroom Split Level Flat
- Two Reception Rooms
- Two Bathrooms
- Close to East Sheen Primary School



This is a particularly large 3 bedroom flat close to East Sheen Primary school and the many amenities of East Sheen. The flat has its own private entrance and is laid out over the first and second floors. A great feature of this property is that the living areas have wood floors throughout. The kitchen/dining area is really well laid out with plenty of worktop space and storage. The units are modern and there is ample space for a large dining table. The main bathroom is on this floor and is tastefully decorated with a shower over the bath. The first of the three double bedrooms is on this floor also and is spacious with built-in wardrobes. The main living room is fantastic with a feature fireplace and modern chic industrial style lighting. The second floor has two further large bedrooms with the main bedroom being en-suite and having great wardrobe space. The second bedroom is particularly large also with great eaves storage. This flat is superbly located and offers more living accommodation than most 3 bedroom houses in the area.

Minimum Term: 12 months
Deposit Required: £3,115.38
Local Authority: London Borough Of Richmond Upon Thames
Council Tax Band: C
EPC Rating: C
Unfurnished



Chestertons East Sheen Lettings

254a Upper Richmond Road West
 East Sheen
 London
 SW14 8AG
 sheen@chestertons.co.uk
 02081040580
 chestertons.co.uk

Additional tenant charges apply (fees apply to non-AST tenancies only)
 Tenancy Agreement Fee: £300
 References per Tenant/Guarantor: £60
 Inventory check (approx. £100 – £250 inc. VAT)
chestertons.co.uk/property-to-rent/applicable-fees

Upper Richmond Road, SW14

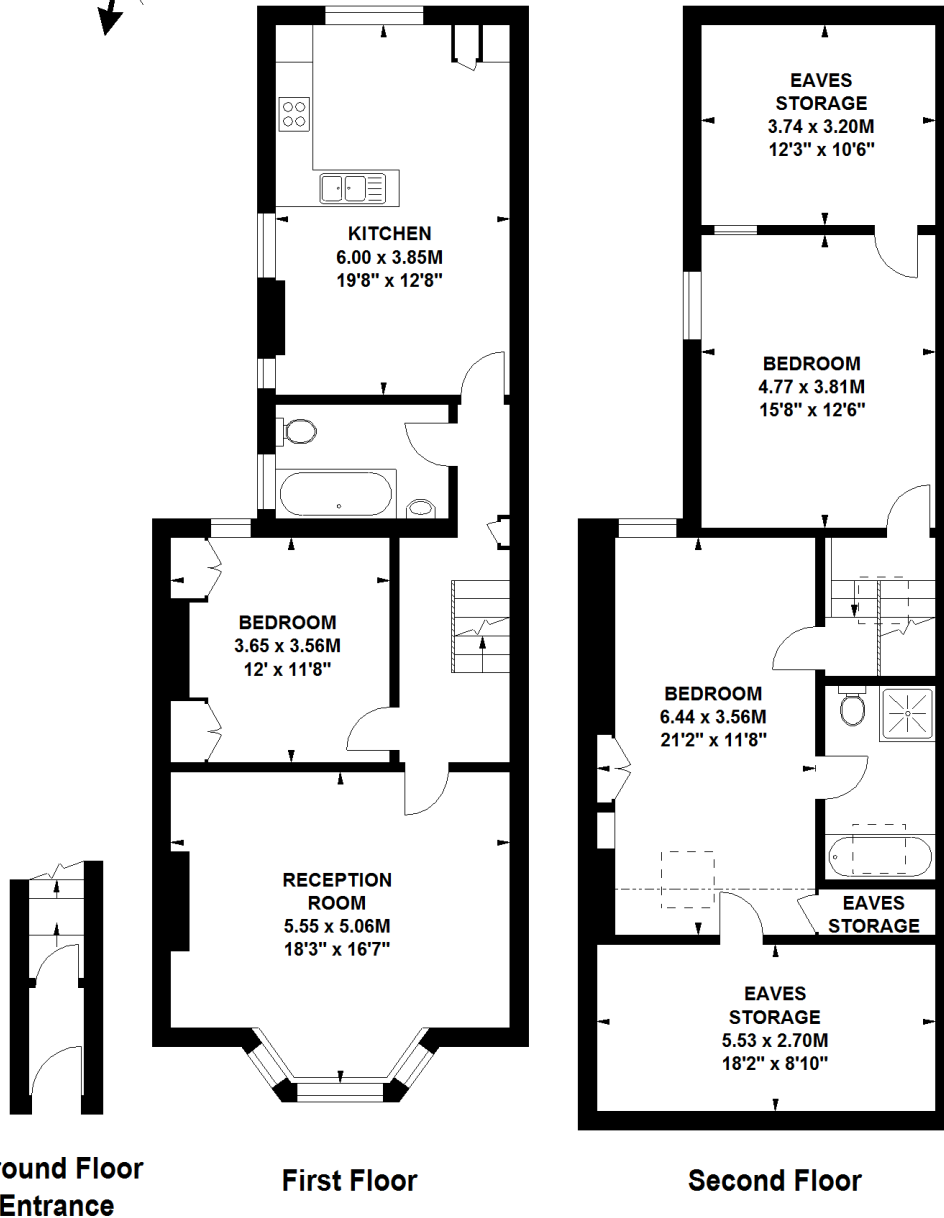
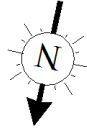
Approximate gross internal area

163.23 sq m / 1757 sq ft

(Including Eaves Storage)

Eaves Storage area

27.22 sq m / 293 sq ft



The floor plan is not to scale and measurements and areas shown are approximate and therefore should be used for illustrative purposes only. The plan has been prepared in accordance with the RICS code of Measuring Practice and whilst we have confidence in the information produced, it must not be relied on. If there is any aspect of particular importance, you should carry out or commission your own inspection of the property. Copyright of FeaturePRO.

