



Sheen Lane

East Sheen, SW14

£8,000 per month
(£1,846.15 per week)

An impressive family home situated close to the entrance to Richmond Park and the amenities of East Sheen.

On the ground floor you are presented with a spacious entrance hall that leads to two separate reception rooms, one has French doors leading to the garden. The ground floor also comprises of a separate dining room, a garage and with an open plan kitchen and utility room.

You are able to access the spacious family garden not only through the reception but the open plan kitchen as well.

The first floor has 4 bedrooms with 2 bathrooms and a shower room one of which an en-suite to the master bedroom and the second floor has a further bedroom with a bathroom and plenty of storage in the eaves.

Positioned on this popular Parkside location, the house is ideally located in relation to all of the amenities found in East Sheen. In particular, the house is close to the banks of the River Thames with walks to Kew Gardens & Barnes. Mortlake station, with services in to central London is within walking distance. Richmond and the surrounding areas are home to a large number of first class schools, including East Sheen Primary, Sheen Mount Primary, Thomson House & Tower House.



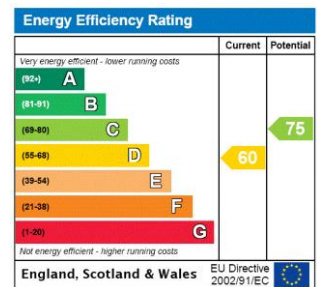
Sheen Lane

East Sheen, SW14

- Detached Home
- 6 Bedrooms
- Spacious Reception Rooms
- Garden
- Near Richmond Park
- Unfurnished
- Long let



Minimum Term: 24 months
Deposit Required: £11,076.92
Local Authority: Richmond upon Thames
Council Tax Band: H
EPC Rating: D
Unfurnished



Chestertons East Sheen Lettings

254a Upper Richmond Road West
 East Sheen
 London
 SW14 8AG
 sheen@chestertons.co.uk
 02081040580
 chestertons.co.uk

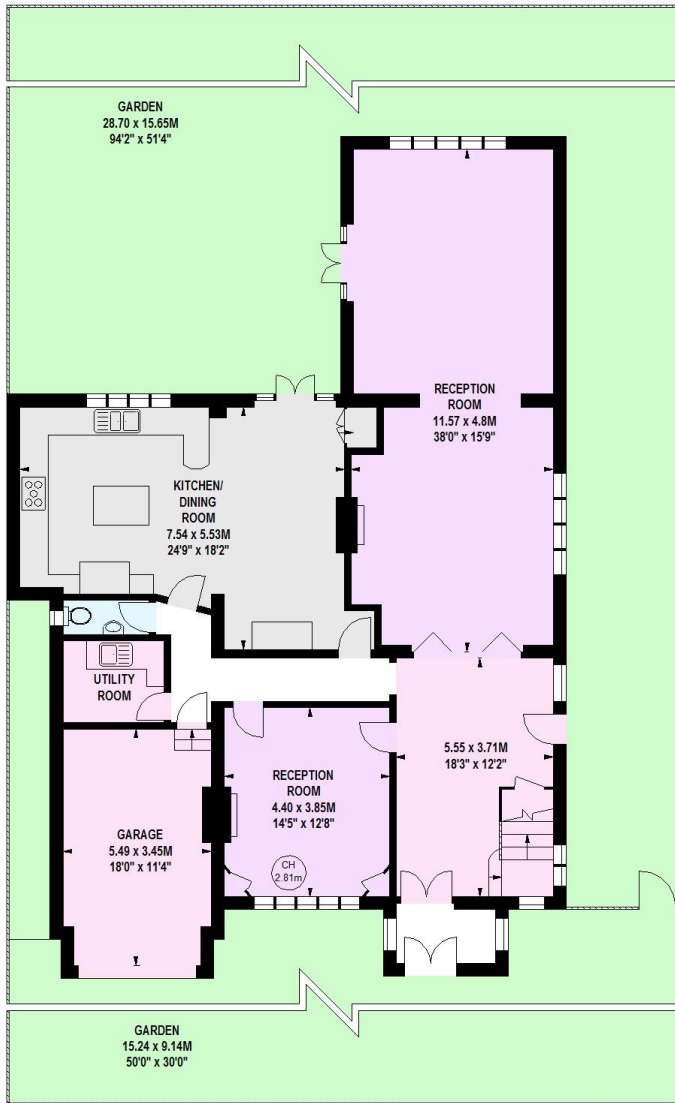
Additional tenant charges apply (fees apply to non-AST tenancies only)
 Tenancy Agreement Fee: £300
 References per Tenant/Guarantor: £60
 Inventory check (approx. £100 – £250 inc. VAT)
chestertons.co.uk/property-to-rent/applicable-fees

Sheen Lane, SW14

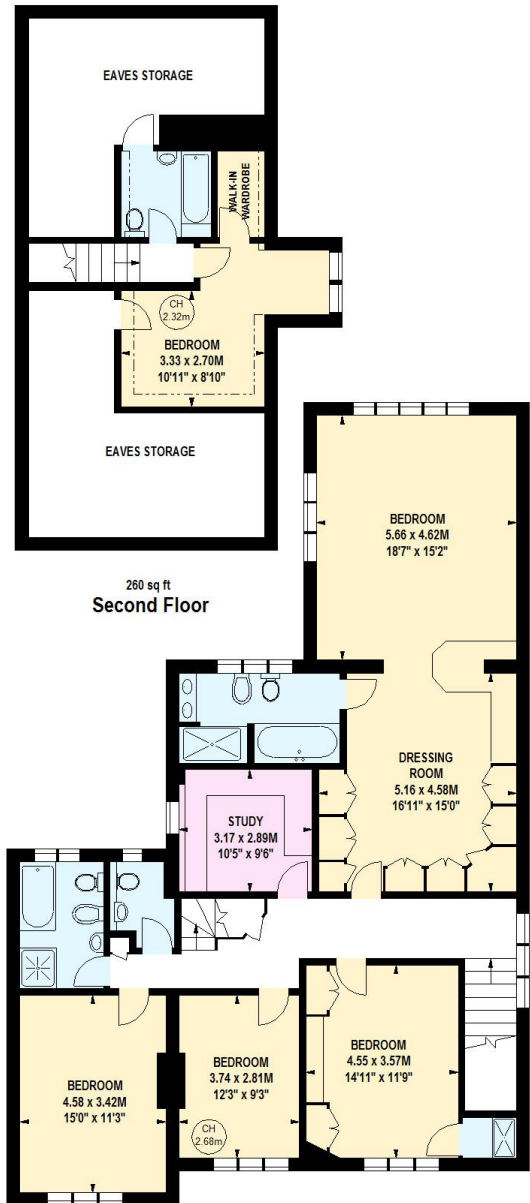
Approximate gross internal area
 382.75 sq m / 4120 sq ft
 (Including Eaves Storage)
 Eaves Storage
 42.55 sq m / 458 sq ft



Key :
 CH - Ceiling Height



1843 sq ft
Ground Floor



260 sq ft
Second Floor

1559 sq ft
First Floor

This floor plan is a representation for guidance purposes only, not for valuation.
 Any figure is approximate and must not be relied on as a statement of fact.
 Copyright of Wyatt Dixon Homes



Chesterton Global Ltd trading as Chestertons for themselves and for the vendor of this property whose agents they are, give notice that (i) these particulars do not constitute any part of an offer or contract, (ii) all statements contained within these particulars are made without responsibility on the part of Chestertons or the vendor, (iii) whilst made in good faith, none of the statements contained within these particulars are to be relied upon as a statement or representation of fact, (iv) any intending purchasers must satisfy themselves by inspection or otherwise as to the correctness of each of the statements contained within these particulars, (v) the vendor does not make or give either Chestertons or any person in their employment any authority to make or give representation or warranty whatsoever in relation to this property. Wide angle lenses may be used. ©Copyright Chestertons | Chesterton Global Ltd | Registered Office 40 Connaught Street, Hyde Park, London W2 2AB Registered Company Number 05334580.



This paper is
 100% recyclable