



# Parliament Mews

Mortlake, SW14

£4,500 per month  
(£1,038.46 per week)

A very well presented four-bedroom town house in a gated development on the banks of the river Thames. The property also benefits from off street parking and is convenient for Mortlake station.



# Parliament Mews

Mortlake, SW14

- Four bedrooms
- Three bathrooms
- Gated development
- Riverside location
- Long let



A beautifully presented four-bedroom townhouse, located in a secure gated development on the banks of the River Thames, offering luxurious living across three floors.

The ground floor features a playroom, en-suite bedroom, cloakroom, utility room, and a lovely private garden.

The first floor includes a modern kitchen/breakfast room, reception room with balcony, and an additional bedroom/study.

The second floor boasts a master suite with balcony, dressing room, and en-suite, a double bedroom, and a family bathroom.

---

**Minimum Term:** 12 months  
**Deposit Required:** £5,192.31  
**Local Authority:** Richmond upon Thames  
**Council Tax Band:** G  
**EPC Rating:** D  
**Unfurnished**

---

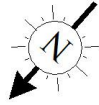
### *Chestertons East Sheen Lettings*

254a Upper Richmond Road West  
East Sheen  
London  
SW14 8AG  
sheen@chestertons.co.uk  
02081040580  
chestertons.co.uk

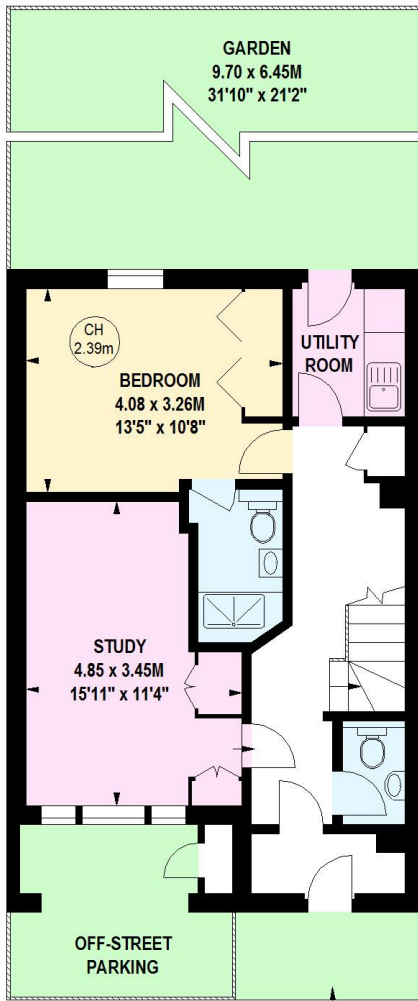
Additional tenant charges apply (fees apply to non-AST tenancies only)  
Tenancy Agreement Fee: £300  
References per Tenant/Guarantor: £60  
Inventory check (approx. £100 – £250 inc. VAT)  
[chestertons.co.uk/property-to-rent/applicable-fees](http://chestertons.co.uk/property-to-rent/applicable-fees)

# Parliament Mews, SW14

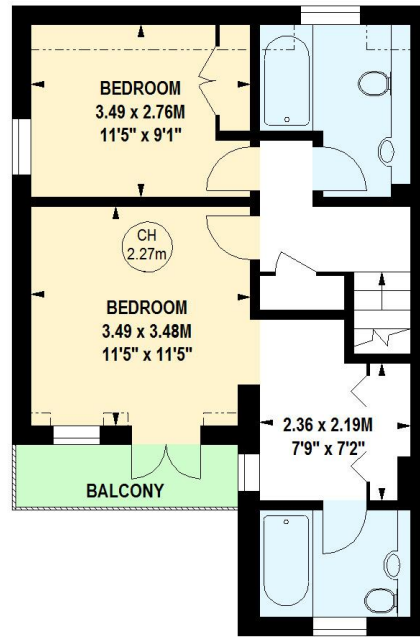
Approximate gross internal area  
155.98 sq m / 1679 sq ft



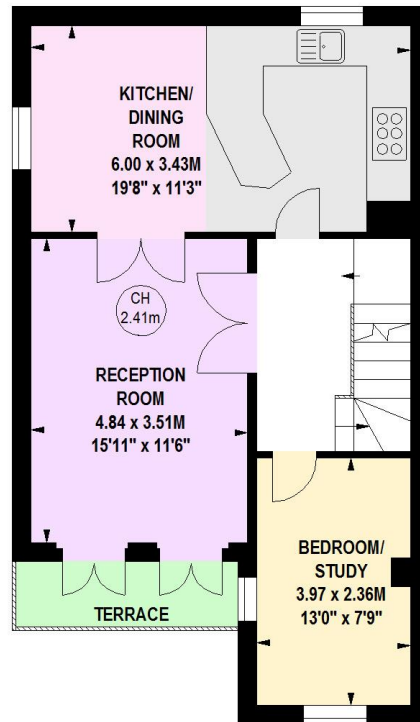
Key:  
CH - Ceiling Height



576 sq ft  
**Ground Floor**



495 sq ft  
**Second Floor**



608 sq ft  
**First Floor**

This floor plan is a representation for guidance purposes only, not for valuation.  
Any figure is approximate and must not be relied on as a statement of fact.  
Copyright of Wyatt Dixon Homes

