



Arundel House

Courtlands, TW10

£2,700 per month
(£623.08 per week)

A spacious three bedroom flat with modern kitchen, reception room and dining room, two balconies, use of communal gardens and garage.

CHESTERTONS



Arundel House

Courtlands, TW10

- Approx. 1000 sq. ft.
- Modern Kitchen
- Communal Gardens
- Garage



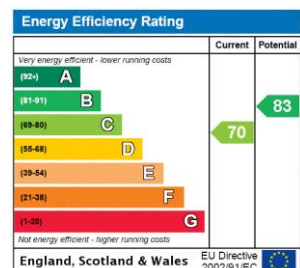
A fantastic three double bedroom apartment of just over 1000 sq. ft. in the much sought after Courtlands development.

Upon entering this second floor apartment, you are greeted with 3 bedrooms, one of which has a balcony, a bathroom with separate shower, and a reception room with separate dining room leading to the modern fitted kitchen. The dining room has access to the second private balcony. The property also benefits from communal gardens and a garage.

Courtlands is set back from Sheen Road and is well placed for transport links via bus to Richmond, Hammersmith and Putney. There is also North Sheen station close by, giving direct access to London Waterloo station.

Courtlands is also conveniently located for Holy Trinity, Marshgate, St Elizabeth's and Christ schools.

Minimum Term: 12 months
Deposit Required: £3,115.38
Local Authority: London Borough of Richmond upon Thames
Council Tax Band: E
EPC Rating: C
Unfurnished



Chestertons East Sheen Lettings

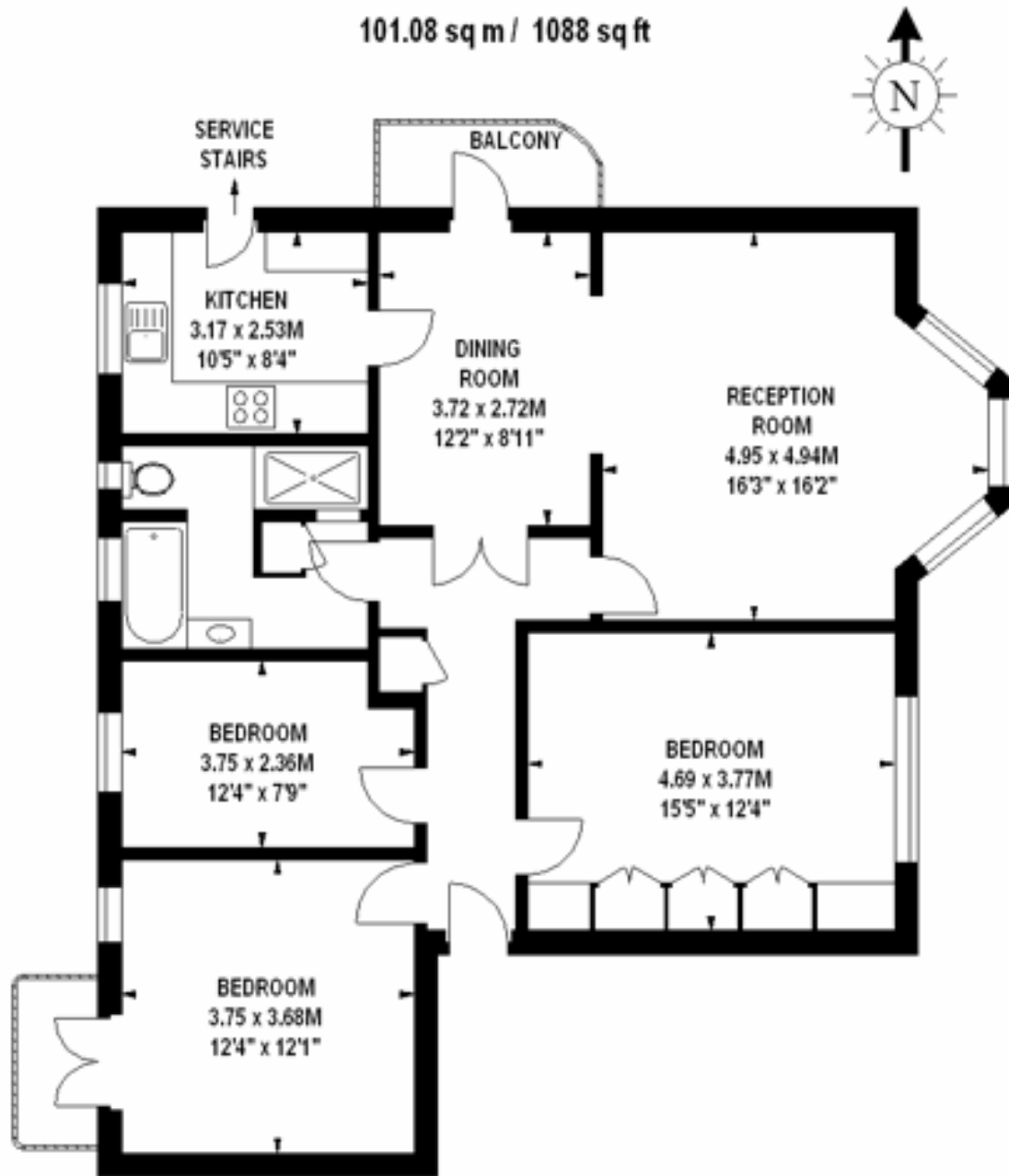
254a Upper Richmond Road West
 East Sheen
 London
 SW14 8AG
 sheen@chestertons.co.uk
 02081040580
 chestertons.co.uk

Additional tenant charges apply (fees apply to non-AST tenancies only)
 Tenancy Agreement Fee: £300
 References per Tenant/Guarantor: £60
 Inventory check (approx. £100 – £250 inc. VAT)
chestertons.co.uk/property-to-rent/applicable-fees

Arundel House, TW10

Approximate gross internal area

101.08 sq m / 1088 sq ft



Second Floor

Illustration For Identification Purposes Only. Not To Scale

*Floorplan Drawn According To RICS Guidelines

Copyright of FeaturePRO

