



Kings Farm Avenue

Richmond, TW10

£3,000 per month
(£692.31 per week)

Recently renovated three bedroom family home located 0.3 miles from North Sheen station. Comprising three bedrooms, reception room, kitchen and bathroom it also benefits from a private garden and shed.

CHESTERTONS



Kings Farm Avenue

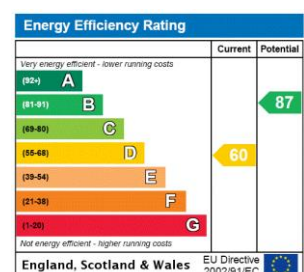
Richmond, TW10

- Three bedroom house
- Private garden with shed
- Unfurnished
- Close to North Sheen station



Recently renovated three bedroom family home located not far from the train station and town centre. The accommodation briefly comprises; Three bedrooms, a reception room with wooden flooring, a separate modern kitchen with direct access to the private garden and a modern bathroom. Available unfurnished.

Minimum Term: 12 months
Deposit Required: £3,461.54
Local Authority: London Borough Richmond Upon Thames
Council Tax Band: D
EPC Rating: D
Unfurnished



Chestertons East Sheen Lettings

254a Upper Richmond Road West
 East Sheen
 London
 SW14 8AG
 sheen@chestertons.co.uk
 02081040580
 chestertons.co.uk

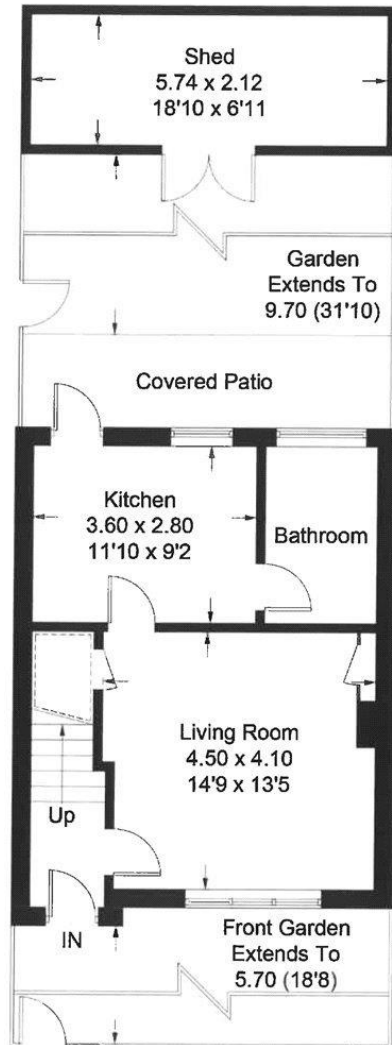
Additional tenant charges apply (fees apply to non-AST tenancies only)
 Tenancy Agreement Fee: £300
 References per Tenant/Guarantor: £60
 Inventory check (approx. £100 – £250 inc. VAT)
chestertons.co.uk/property-to-rent/applicable-fees

Kings Farm Avenue


Approximate Gross Internal Area = 80 sq m / 861 sq ft

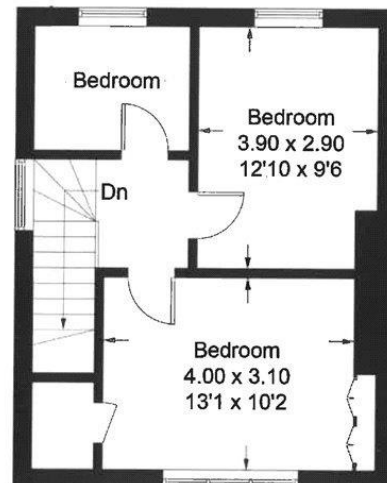
Shed = 12.1 sq m / 130 sq ft

Total = 92.1 sq m / 991 sq ft



Ground Floor

 = Reduced headroom below 1.5m / 5'0



First Floor

Featherstone Leigh Ltd
Every attempt is made to assure accuracy, however measurements are approximate and for illustrative purposes only. Not to scale. (ID784940)

