



Trehern Road

East Sheen, SW14

£2,650 per month
(£611.54 per week)

This is a well presented two bedroom house on a popular road in "The Royals" area of East Sheen. This home boasts a private rear garden, great living space & study area.

CHESTERTONS



Treherne Road

East Sheen, SW14

- Situated in the royals area of East Sheen
- Close to East Sheen Primary school
- Private rear garden
- Wood floors in the double reception room



A charming and well-presented two bedroom period cottage located in 'The Royals', which is a popular area in East Sheen.

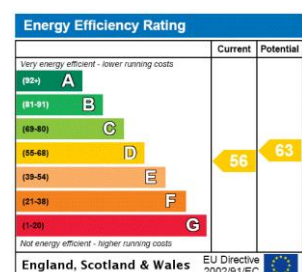
This beautiful house has wooden floors throughout the double reception room and there is a fantastic ornate fireplace.

The kitchen has plenty of cupboard space and leads to the private rear garden.

There are 2 bedrooms on the first floor, a third room for use as a home office/study and a family bathroom.

This superb house is available from late May.

Minimum Term: 12 months
Deposit Required: £3,057.69
Local Authority: London Borough of Richmond upon Thames
Council Tax Band: E
EPC Rating: D
Unfurnished



Chestertons East Sheen Lettings

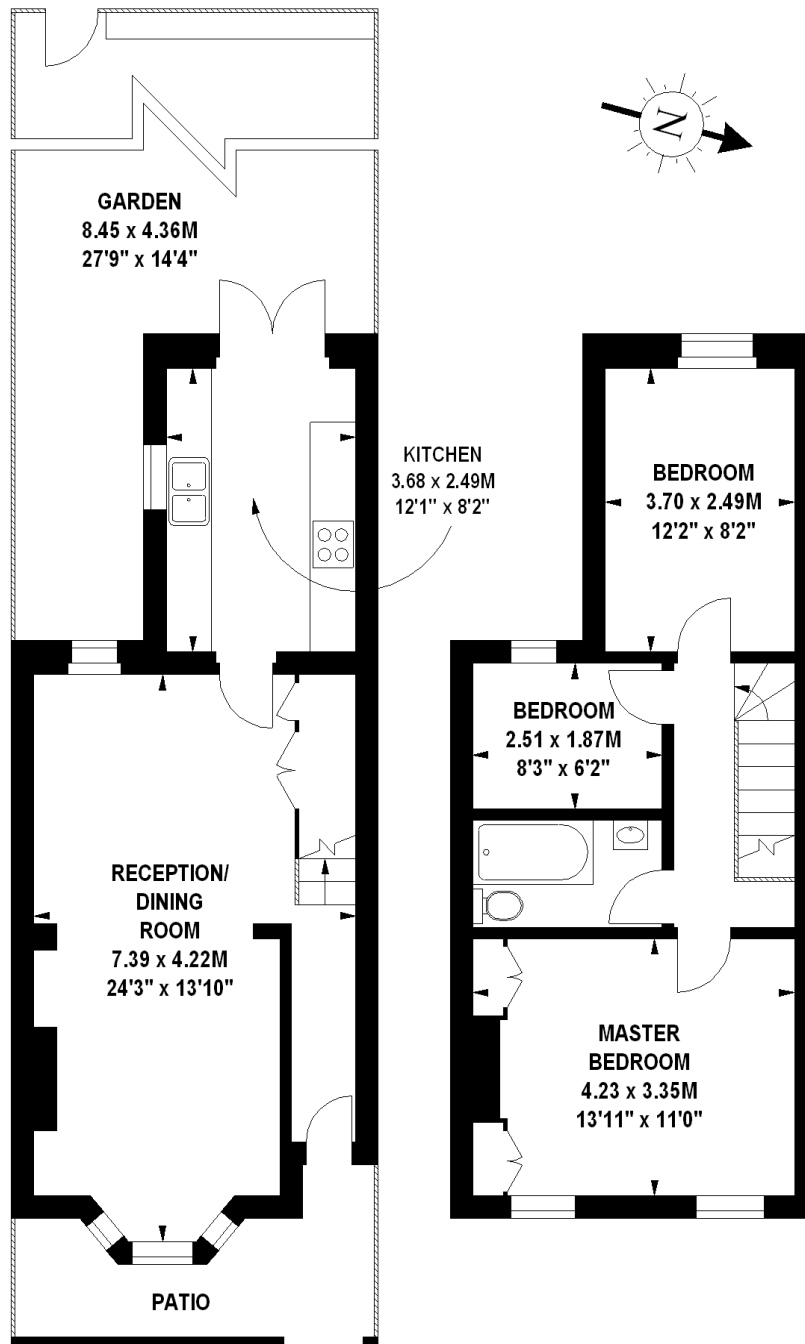
254a Upper Richmond Road West
 East Sheen
 London
 SW14 8AG
 sheen@chestertons.co.uk
 02081040580
 chestertons.co.uk

Additional tenant charges apply (fees apply to non-AST tenancies only)
 Tenancy Agreement Fee: £300
 References per Tenant/Guarantor: £60
 Inventory check (approx. £100 – £250 inc. VAT)
 chestertons.co.uk/property-to-rent/applicable-fees

Trehern Road, SW14

Approximate gross internal area

78.31sq m / 843 sq ft



Ground Floor

422 sq ft

First Floor

421 sq ft

Illustration For Identification Purposes Only. Not To Scale

*Floorplan Drawn According To RICS Guidelines

Copyright of FeaturePRO

Chesterton Global Ltd trading as Chestertons for themselves and for the vendor of this property whose agents they are, give notice that (i) these particulars do not constitute any part of an offer or contract, (ii) all statements contained within these particulars are made without responsibility on the part of Chestertons or the vendor, (iii) whilst made in good faith, none of the statements contained within these particulars are to be relied upon as a statement or representation of fact, (iv) any intending purchasers must satisfy themselves by inspection or otherwise as to the correctness of each of the statements contained within these particulars, (v) the vendor does not make or give either Chestertons or any person in their employment any authority to make or give representation or warranty whatsoever in relation to this property. Wide angle lenses may be used. ©Copyright Chestertons | Chesterton Global Ltd | Registered Office 40 Connaught Street, Hyde Park, London W2 2AB Registered Company Number 05334580.



This paper is
100% recyclable