



Palewell Park

East Sheen, SW14

£6,800 per month
(£1,569.23 per week)

* UNDERGOING REFURBISHMENTS*

A fantastic and well-appointed six bedroom family home. Situated on this enviable road on the Parkside of Sheen, close to Palewell Common and Richmond Park.

CHESTERTONS



Palewell Park

East Sheen, SW14

- 6 Bedrooms
- 2 Bathrooms
- 2 Reception Rooms
- Large Attractive Rear Garden
- Off Street Parking



A fantastic and spacious period home on one of the premier roads in East Sheen's Parkside.

On the ground floor there is a generous reception room with bay window to front of the property, a large separate kitchen, A WC and a second reception room with doors accessing to the rear attractive garden.

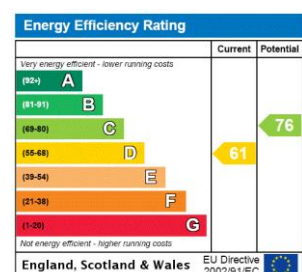
On the first floor there are 3 bedrooms, and a family bathroom.

The second floor comprises 3 bedrooms and a bathroom.

Other benefits include driveway parking for one car.

Palewell Park is an exceptionally popular road and houses rarely come available to rent here. The proximity to Richmond Park, Palewell Common, the amenities of East Sheen and Mortlake station all make this road very popular with families.

Minimum Term: 12 Months
Deposit Required: £1,730.76
Local Authority: London Borough of Richmond upon Thames
Council Tax Band: G
EPC Rating: D



Chestertons East Sheen Lettings

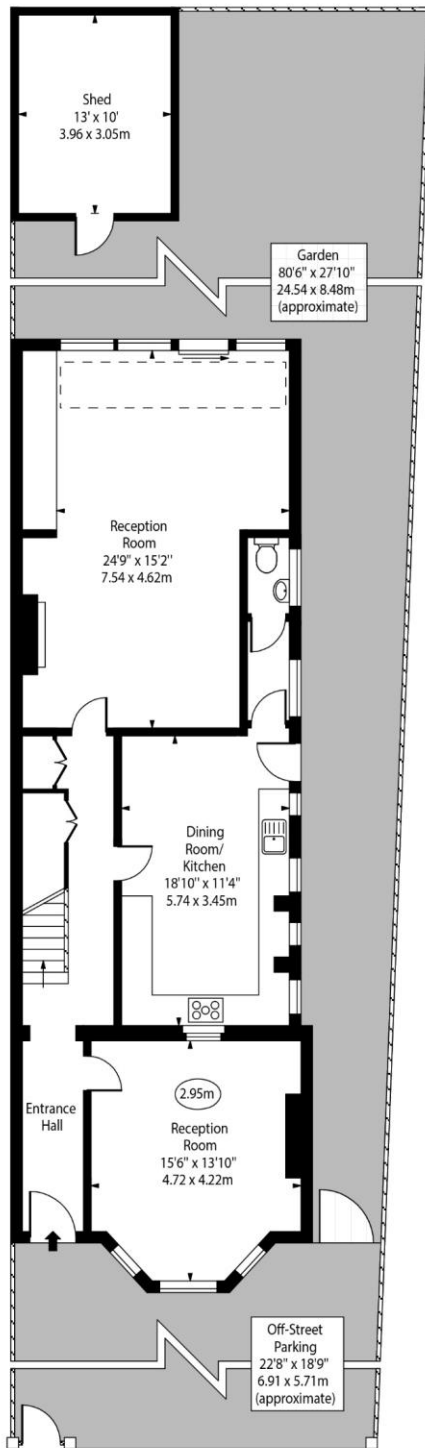
254a Upper Richmond Road West
 East Sheen
 London
 SW14 8AG
 lettings.sheen@chestertons.com
 02081040580
 chestertons.com

Additional tenant charges apply (fees apply to non-AST tenancies only)
 Tenancy Agreement Fee: £300
 References per Tenant/Guarantor: £60
 Inventory check (approx. £100 – £250 inc. VAT)
[chestertons.com/property-to-rent/applicable-fees](https://www.chestertons.com/property-to-rent/applicable-fees)

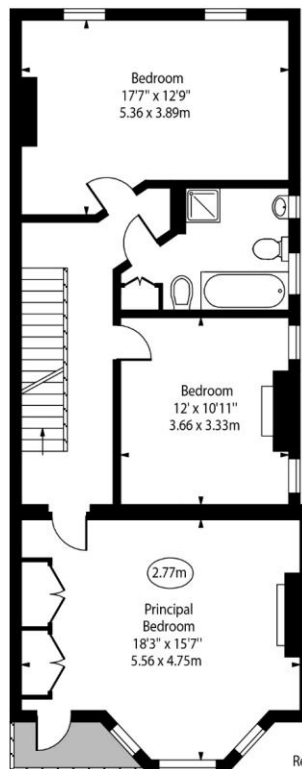
Palewell Park,
East Sheen, SW14



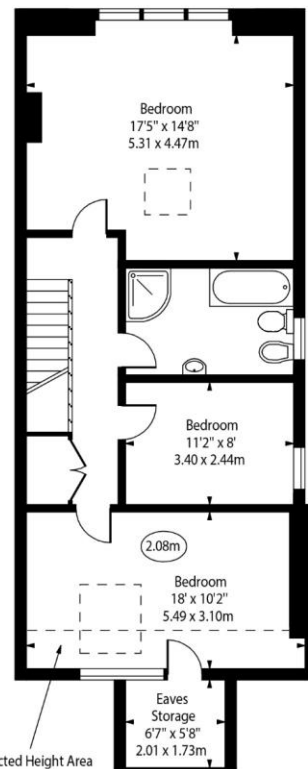
○ Ceiling Height



Ground Floor



First Floor



Second Floor

Approx Gross Internal Area 2562 Sq Ft - 238.01 Sq M
Approx. Floor Area Including Restricted Heights 2648 Sq Ft - 246.00 Sq M
(Including Eaves Storage)

For Illustration Purposes Only - Not To Scale
www.goldlens.co.uk
Ref. No. 018072E

Chesterton Global Ltd trading as Chestertons for themselves and for the vendor of this property whose agents they are, give notice that (i) these particulars do not constitute any part of an offer or contract, (ii) all statements contained within these particulars are made without responsibility on the part of Chestertons or the vendor, (iii) whilst made in good faith, none of the statements contained within these particulars are to be relied upon as a statement or representation of fact, (iv) any intending purchasers must satisfy themselves by inspection or otherwise as to the correctness of each of the statements contained within these particulars, (v) the vendor does not make or give either Chestertons or any person in their employment any authority to make or give representation or warranty whatsoever in relation to this property. Wide angle lenses may be used. ©Copyright Chestertons | Chesterton Global Ltd | Registered Office 40 Connaught Street, Hyde Park, London W2 2AB Registered Company Number 05334580.



This paper is
100% recyclable